

For Research Use Only

AMBRA1 Polyclonal antibody

Catalog Number: 13762-1-AP

Featured Product

20 Publications



Basic Information

Catalog Number:

13762-1-AP

Size:

150ul, Concentration: 500 ug/ml by Nanodrop and 220 ug/ml by Bradford method using BSA as the standard;

Source:

Rabbit

Isotype:

IgG

Immunogen Catalog Number:

AG4735

GenBank Accession Number:

BC045609

GeneID (NCBI):

55626

UNIPROT ID:

Q9C0C7

Full Name:

autophagy/beclin-1 regulator 1

Calculated MW:

1208 aa, 133 kDa

Observed MW:

130-135 kDa

Purification Method:

Antigen affinity purification

Recommended Dilutions:

WB: 1:500-1:1000

IHC: 1:50-1:500

IF/ICC: 1:50-1:500

Applications

Tested Applications:

WB, IHC, IF/ICC, ELISA

Cited Applications:

WB, IHC, IF, IP, CoIP

Species Specificity:

human, mouse, rat

Cited Species:

human, mouse

Note-IHC: suggested antigen retrieval with TE buffer pH 9.0; (*) Alternatively, antigen retrieval may be performed with citrate buffer pH 6.0

Positive Controls:

WB: MCF-7 cells, human brain tissue, HT-1080 cells, HepG2 cells, mouse brain tissue

IHC: human liver cancer tissue,

IF/ICC: HepG2 cells, MCF-7 cells

Background Information

AMBRA1 (Activating molecule in BECN1-regulated autophagy protein 1), also known as WDR94 or KIAA1736, is a 1,298 amino acid protein that contains three WD repeats. AMBRA1 regulates autophagy and development of the nervous system. Involved in autophagy in controlling protein turnover during neuronal development, and in regulating normal cell survival and proliferation. This antibody works well in WB, IHC and IF application.

Notable Publications

Author	Pubmed ID	Journal	Application
Junjun Zhou	32942015	Pharmacol Res	WB
Zinan Wang	34715363	Int J Biochem Cell Biol	WB
Binbin Zhao	34901460	Open Med (Wars)	WB,IP

Storage

Storage:

Store at -20°C. Stable for one year after shipment.

Storage Buffer:

PBS with 0.02% sodium azide and 50% glycerol, pH7.3

Aliquoting is unnecessary for -20°C storage

*** 20ul sizes contain 0.1% BSA

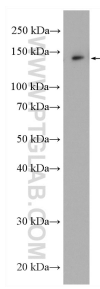
For technical support and original validation data for this product please contact:

T: 1 (888) 4PTGLAB (1-888-478-4522) (toll free in USA), or 1(312) 455-8498 (outside USA)

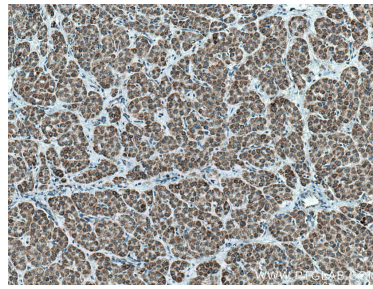
E: proteintech@ptglab.com
W: ptglab.com

This product is exclusively available under Proteintech Group brand and is not available to purchase from any other manufacturer.

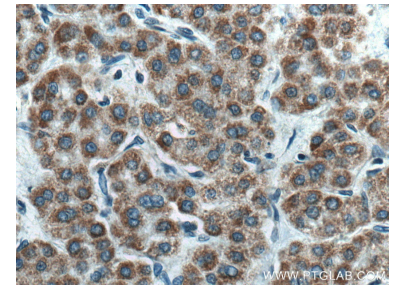
Selected Validation Data



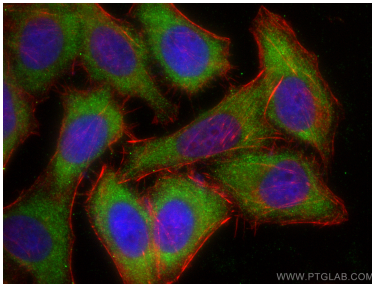
MCF-7 cells were subjected to SDS PAGE followed by western blot with 13762-1-AP (AMBRA1 antibody) at dilution of 1:500 incubated at room temperature for 1.5 hours.



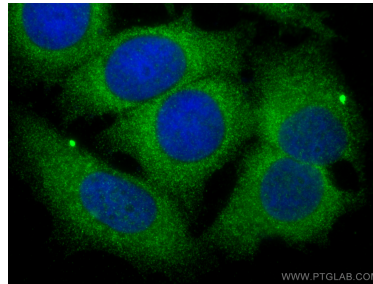
Immunohistochemical analysis of paraffin-embedded human liver cancer tissue slide using 13762-1-AP (AMBRA1 antibody) at dilution of 1:200 (under 10x lens). Heat mediated antigen retrieval with Tris-EDTA buffer (pH 9.0).



Immunohistochemical analysis of paraffin-embedded human liver cancer tissue slide using 13762-1-AP (AMBRA1 antibody) at dilution of 1:200 (under 40x lens). Heat mediated antigen retrieval with Tris-EDTA buffer (pH 9.0).



Immunofluorescent analysis of (-20°C Ethanol) fixed HepG2 cells using AMBRA1 antibody (13762-1-AP) at dilution of 1:200 and CoraLite®488-Conjugated AffiniPure Goat Anti-Rabbit IgG(H+L), CL594-phalloidin (red).



Immunofluorescent analysis of (-20°C Methanol) fixed MCF-7 cells using AMBRA1 antibody (13762-1-AP) at dilution of 1:400 and CoraLite®488-Conjugated AffiniPure Goat Anti-Rabbit IgG(H+L) (SA00013-2).