

For Research Use Only

Entactin Polyclonal antibody

Catalog Number: 13766-1-AP

4 Publications



Basic Information

Catalog Number:

13766-1-AP

Size:

150ul, Concentration: 133 ug/ml by Nanodrop and 133 ug/ml by Bradford method using BSA as the standard;

Source:

Rabbit

Isotype:

IgG

Immunogen Catalog Number:

AG4749

GenBank Accession Number:

BC045606

GeneID (NCBI):

4811

UNIPROT ID:

P14543

Full Name:

nidogen 1

Calculated MW:

1247 aa, 136 kDa

Observed MW:

136-150 kDa

Purification Method:

Antigen affinity purification

Recommended Dilutions:

WB 1:1000-1:4000

IP 0.5-4.0 ug for 1.0-3.0 mg of total protein lysate

IHC 1:200-1:800

IF/ICC 1:50-1:500

Applications

Tested Applications:

WB, IHC, IF/ICC, IP, ELISA

Cited Applications:

WB, IF, CoIP

Species Specificity:

human, mouse, rat

Cited Species:

human, rat

Note-IHC: suggested antigen retrieval with TE buffer pH 9.0; (*) Alternatively, antigen retrieval may be performed with citrate buffer pH 6.0

Positive Controls:

WB : human placenta tissue, mouse heart tissue, mouse placenta tissue

IP : human placenta tissue,

IHC : human stomach cancer tissue,

IF/ICC : HepG2 cells,

Background Information

Nidogen 1 (Entactin), first identified from a basement membrane-secreting cell line and the murine EHS tumor, is together with perlecan, laminin, and collagen IV, a ubiquitous component of basement membranes (PMID: 19530222). Nidogen-1 is made by mesenchymal cells and is incorporated into the epithelial BM. It is a sulfated glycoprotein of 150 kDa with three globular domains, G1, G2 and G3, and contains binding sites for other ECM molecules (PMID: 10958695, 10671374).

Notable Publications

| Author | Pubmed ID | Journal | Application |
|----------------|-----------|------------------------------|-------------|
| Pengzhen Cheng | 35310379 | Bioact Mater | WB, CoIP |
| Emna Ouni | 35341935 | Matrix Biol | IF |
| Huan Zhang | 39472581 | Signal Transduct Target Ther | WB |

Storage

Storage:

Store at -20°C. Stable for one year after shipment.

Storage Buffer:

PBS with 0.02% sodium azide and 50% glycerol pH 7.3.

Aliquoting is unnecessary for -20°C storage

*** 20ul sizes contain 0.1% BSA

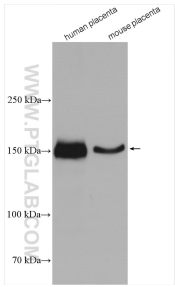
For technical support and original validation data for this product please contact:

T: 1 (888) 4PTGLAB (1-888-478-4522) (toll free in USA), or 1(312) 455-8498 (outside USA)

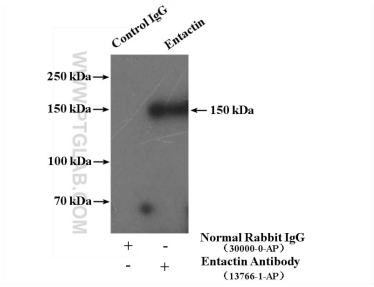
E: proteintech@ptglab.com
W: ptglab.com

This product is exclusively available under Proteintech Group brand and is not available to purchase from any other manufacturer.

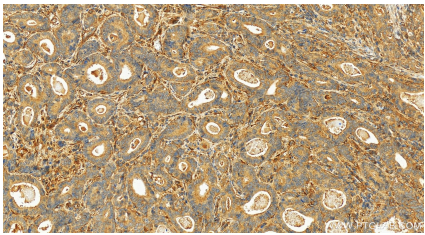
Selected Validation Data



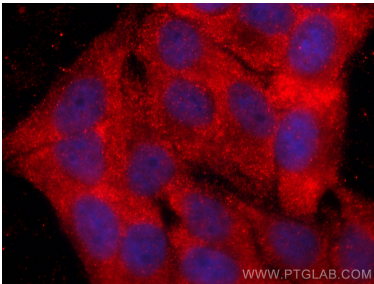
Various lysates were subjected to SDS PAGE followed by western blot with 13766-1-AP (Entactin antibody) at dilution of 1:2000 incubated at room temperature for 1.5 hours.



IP result of anti-Entactin (IP:13766-1-AP, 4ug; Detection:13766-1-AP 1:200) with human placenta tissue lysate 4000ug.



Immunohistochemical analysis of paraffin-embedded human stomach cancer tissue slide using 13766-1-AP (Entactin antibody) at dilution of 1:400 (under 20x lens). Heat mediated antigen retrieval with Tris-EDTA buffer (pH 9.0).



Immunofluorescent analysis of (-20°C Ethanol) fixed HepG2 cells using Entactin antibody (13766-1-AP) at dilution of 1:200 and CoraLite®594-Conjugated Goat Anti-Rabbit IgG(H+L) (SA00013-4).