

For Research Use Only

# PDE1C Polyclonal antibody

Catalog Number: 13785-1-AP

2 Publications



## Basic Information

### Catalog Number:

13785-1-AP

### Size:

150ul, Concentration: 350 ug/ml by Nanodrop and 207 ug/ml by Bradford method using BSA as the standard;

### Source:

Rabbit

### Isotype:

IgG

### Immunogen Catalog Number:

AG4798

### GenBank Accession Number:

BC022525

### GeneID (NCBI):

5137

### UNIPROT ID:

Q14123

### Full Name:

phosphodiesterase 1C, calmodulin-dependent 70kDa

### Calculated MW:

634 aa, 72 kDa

### Observed MW:

68 kDa

### Purification Method:

Antigen affinity purification

### Recommended Dilutions:

WB 1:500-1:2000

IP 0.5-4.0 ug for 1.0-3.0 mg of total protein lysate

## Applications

### Tested Applications:

WB, IP, ELISA

### Cited Applications:

WB

### Species Specificity:

human, mouse

### Cited Species:

rat, mouse

### Positive Controls:

WB : human heart tissue,

IP : mouse heart tissue,

## Background Information

Cyclic nucleotide phosphodiesterases (PDEs) catalyze hydrolysis of the cyclic nucleotides cAMP and cGMP to the corresponding nucleoside 5-prime-monophosphates. PDE1C, is calmodulin-dependent PDEs (CaM-PDEs) that are stimulated by a calcium-calmodulin complex. Expression of PDE1C may be an important component in signal transduction pathways mediated by calcium that permit cell cycle traverse and proliferation(PMID:9366577). It has 2 isoforms produced by alternative splicing.

## Notable Publications

Author	Pubmed ID	Journal	Application
Makoto Ando	28870522	Free Radic Biol Med	WB
Mehdi Eshraghi	32426479	Sci Adv	WB

## Storage

### Storage:

Store at -20°C. Stable for one year after shipment.

### Storage Buffer:

PBS with 0.02% sodium azide and 50% glycerol pH 7.3.

Aliquoting is unnecessary for -20°C storage

\*\*\* 20ul sizes contain 0.1% BSA

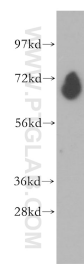
For technical support and original validation data for this product please contact:

T: 1 (888) 4PTGLAB (1-888-478-4522) (toll free in USA), or 1(312) 455-8498 (outside USA)

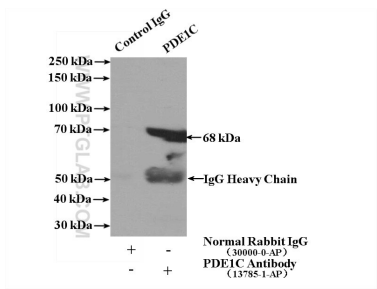
E: [proteintech@ptglab.com](mailto:proteintech@ptglab.com)  
W: [ptglab.com](http://ptglab.com)

This product is exclusively available under Proteintech Group brand and is not available to purchase from any other manufacturer.

Selected Validation Data



human heart tissue were subjected to SDS PAGE followed by western blot with 13785-1-AP (PDE1C antibody) at dilution of 1:500 incubated at room temperature for 1.5 hours.



IP result of anti-PDE1C (IP:13785-1-AP, 4ug; Detection:13785-1-AP 1:500) with mouse heart tissue lysate 4000ug.