

For Research Use Only

DIXDC1 Polyclonal antibody

Catalog Number: 13816-1-AP

2 Publications



Basic Information

Catalog Number:

13816-1-AP

Size:

150ul, Concentration: 450 ug/ml by Nanodrop and 267 ug/ml by Bradford method using BSA as the standard;

Source:

Rabbit

Isotype:

IgG

Immunogen Catalog Number:

AG4904

GenBank Accession Number:

BC033034

GeneID (NCBI):

85458

UNIPROT ID:

Q155Q3

Full Name:

DIX domain containing 1

Calculated MW:

683 aa, 77 kDa

Observed MW:

70-75 kDa

Purification Method:

Antigen affinity purification

Recommended Dilutions:

WB 1:500-1:3000

IHC 1:50-1:500

Applications

Tested Applications:

WB, IHC, ELISA

Cited Applications:

WB

Species Specificity:

human, mouse

Cited Species:

human, rat

Note-IHC: suggested antigen retrieval with TE buffer pH 9.0; (*) Alternatively, antigen retrieval may be performed with citrate buffer pH 6.0

Positive Controls:

WB : mouse skeletal muscle tissue, mouse heart tissue

IHC : human heart tissue, human kidney tissue, human testis tissue, human skin tissue, human lung tissue, human ovary tissue

Notable Publications

Author	Pubmed ID	Journal	Application
Jérémy Willekens	29804229	Mol Neurobiol	WB
Yahui Leng	38656551	Mol Carcinog	WB

Storage

Storage:

Store at -20°C. Stable for one year after shipment.

Storage Buffer:

PBS with 0.02% sodium azide and 50% glycerol pH 7.3.

Aliquoting is unnecessary for -20°C storage

*** 20ul sizes contain 0.1% BSA

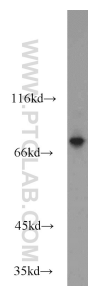
For technical support and original validation data for this product please contact:

T: 1 (888) 4PTGLAB (1-888-478-4522) (toll free in USA), or 1(312) 455-8498 (outside USA)

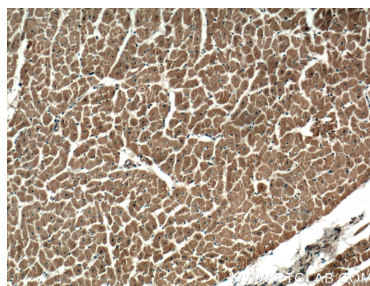
E: proteintech@ptglab.com
W: ptglab.com

This product is exclusively available under Proteintech Group brand and is not available to purchase from any other manufacturer.

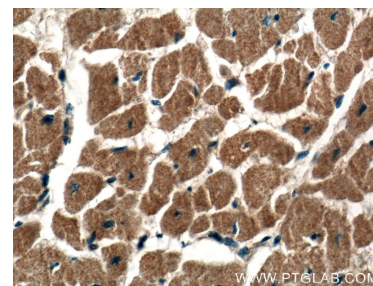
Selected Validation Data



mouse skeletal muscle tissue were subjected to SDS PAGE followed by western blot with 13816-1-AP (DIXDC1 antibody) at dilution of 1:1500 incubated at room temperature for 1.5 hours.



Immunohistochemical analysis of paraffin-embedded human heart tissue slide using 13816-1-AP (DIXDC1 antibody) at dilution of 1:200 (under 10x lens).



Immunohistochemical analysis of paraffin-embedded human heart tissue slide using 13816-1-AP (DIXDC1 antibody) at dilution of 1:200 (under 40x lens).