

For Research Use Only

ARTS1 Polyclonal antibody

Catalog Number: 13821-1-AP **2 Publications**



Basic Information

Catalog Number: 13821-1-AP	GenBank Accession Number: BC030775	Purification Method: Antigen affinity purification
Size: 150ul , Concentration: 300 µg/ml by Nanodrop;	GeneID (NCBI): 51752	Recommended Dilutions: WB 1:500-1:2000 IP 0.5-4.0 ug for IP and 1:500-1:1000 for WB
Source: Rabbit	Full Name: endoplasmic reticulum aminopeptidase 1	IHC 1:20-1:200
Isotype: IgG	Calculated MW: 107 kDa	
Immunogen Catalog Number: AG4918	Observed MW: 106 kDa	

Applications

Tested Applications: IHC, IP, WB, ELISA	Positive Controls:
Cited Applications: WB	WB : K-562 cells, Jurkat cells
Species Specificity: human, mouse, rat	IP : Jurkat cells,
Cited Species: human	IHC : human ovary tumor tissue,

Note-IHC: suggested antigen retrieval with TE buffer pH 9.0; (*) Alternatively, antigen retrieval may be performed with citrate buffer pH 6.0

Background Information

ARTS1 is an endoplasmic reticulum-associated aminopeptidase (also known as ERAP1). ERAP1 is induced by interferon-gama and can degrade peptides 9-15 residues long(PMID:18987748).ARTS1 is a 100 kDa, monomeric, soluble zinc aminopeptidase. It can be glycosylated to 120KDa and form homodimers and heterodimers(PMID:15908954).

Notable Publications

Author	Pubmed ID	Journal	Application
Seregin Sergey S SS	24028501	Autoimmunity	
Irini Evnouchidou	24928998	J Immunol	WB

Storage

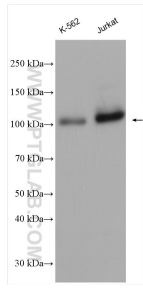
Storage:
Store at -20°C. Stable for one year after shipment.
Storage Buffer:
PBS with 0.02% sodium azide and 50% glycerol pH 7.3.
Aliquoting is unnecessary for -20°C storage

***** 20ul sizes contain 0.1% BSA**

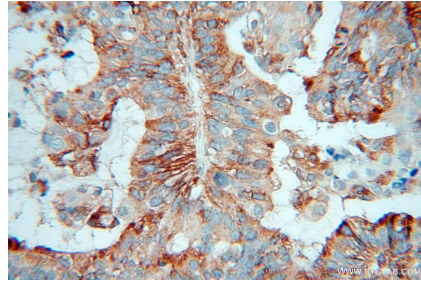
For technical support and original validation data for this product please contact:
T: 1 (888) 4PTGLAB (1-888-478-4522) (toll free in USA), or 1(312) 455-8498 (outside USA)
E: proteintech@ptglab.com
W: ptglab.com

This product is exclusively available under Proteintech Group brand and is not available to purchase from any other manufacturer.

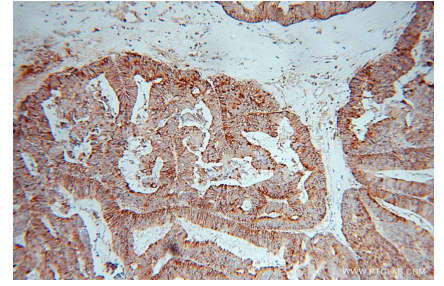
Selected Validation Data



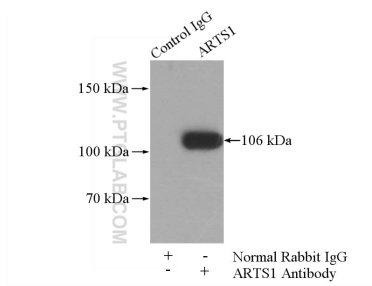
K-562 cells were subjected to SDS PAGE followed by western blot with 13821-1-AP (ARTS1 antibody) at dilution of 1:1000 incubated at room temperature for 1.5 hours.



Immunohistochemical analysis of paraffin-embedded human ovary tumor using 13821-1-AP (ARTS1 antibody) at dilution of 1:100 (under 40x lens).



Immunohistochemical analysis of paraffin-embedded human ovary tumor using 13821-1-AP (ARTS1 antibody) at dilution of 1:100 (under 10x lens).



IP Result of anti-ARTS1 (IP:13821-1-AP, 4ug; Detection:13821-1-AP 1:600) with Jurkat cells lysate 3600ug.