

For Research Use Only

AEG-1/MTDH Polyclonal antibody

Catalog Number: 13860-1-AP

Featured Product

56 Publications



Basic Information

Catalog Number:

13860-1-AP

Size:

150ul, Concentration: 900 ug/ml by Nanodrop and 353 ug/ml by Bradford method using BSA as the standard;

Source:

Rabbit

Isotype:

IgG

Immunogen Catalog Number:

AG4840

GenBank Accession Number:

BC045642

GeneID (NCBI):

92140

UNIPROT ID:

Q86UE4

Full Name:

metadherin

Calculated MW:

582 aa, 64 kDa

Observed MW:

65-70 kDa

Purification Method:

Antigen affinity purification

Recommended Dilutions:

WB: 1:500-1:2000

IP: 0.5-4.0 ug for 1.0-3.0 mg of total protein lysate

IHC: 1:200-1:800

IF/ICC: 1:200-1:800

Applications

Tested Applications:

WB, IHC, IF/ICC, IP, ELISA

Cited Applications:

WB, IHC, IF, IP, CoIP, RIP

Species Specificity:

human, mouse

Cited Species:

human, mouse, rat

Note-IHC: suggested antigen retrieval with TE buffer pH 9.0; (*) Alternatively, antigen retrieval may be performed with citrate buffer pH 6.0

Positive Controls:

WB: MCF-7 cells, A375 cells, HeLa cells, DU 145 cells, HL-60 cells, A549 cells, mouse spleen tissue, PC-3 cells, HepG2 cells, RAW 264.7 cells

IP: MCF-7 cells,

IHC: human breast cancer tissue, mouse brain tissue, human liver cancer tissue

IF/ICC: MCF-7 cells,

Background Information

MTDH, also known as AEG-1, is a single-pass transmembrane protein with its gene located at chromosome 8q22, the abnormalities of which have been identified in several tumor types. MTDH is overexpressed in a number of malignancies, such as breast cancer, malignant glioma, and neuroblastoma, and its overexpression is associated with poor clinical outcome. MTDH plays an important role in the regulation of carcinogenesis and tumor progression. This antibody got two bands about 70 kDa and 80 kDa in western blotting, possibly due to posttranslational modification.

Notable Publications

Author	Pubmed ID	Journal	Application
Kai-Lin Peng	36067288	Proc Natl Acad Sci U S A	RIP
Kunmei Liu	36237597	Exp Ther Med	WB
Junqi Fu	36133745	Mediators Inflamm	WB

Storage

Storage:

Store at -20°C. Stable for one year after shipment.

Storage Buffer:

PBS with 0.02% sodium azide and 50% glycerol, pH7.3

Aliquoting is unnecessary for -20°C storage

*** 20ul sizes contain 0.1% BSA

For technical support and original validation data for this product please contact:

T: 1 (888) 4PTGLAB (1-888-478-4522) (toll free in USA), or 1(312) 455-8498 (outside USA)

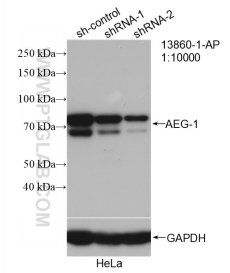
E: proteintech@ptglab.com
W: ptglab.com

This product is exclusively available under Proteintech Group brand and is not available to purchase from any other manufacturer.

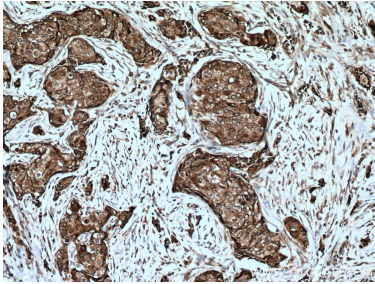
Selected Validation Data



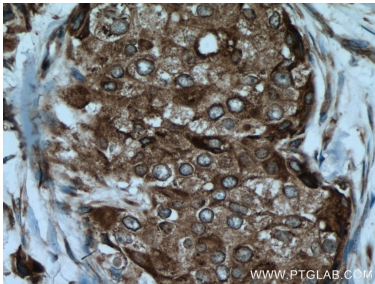
MCF-7 cells were subjected to SDS PAGE followed by western blot with 13860-1-AP (AEG-1/MTDH-Specific antibody) at dilution of 1:1000 incubated at room temperature for 1.5 hours.



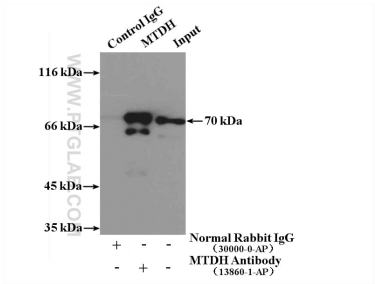
WB result of AEG-1/MTDH-Specific antibody (13860-1-AP; 1:10000; incubated at room temperature for 1.5 hours) with sh-Control and sh-AEG-1/MTDH-Specific transfected HeLa cells.



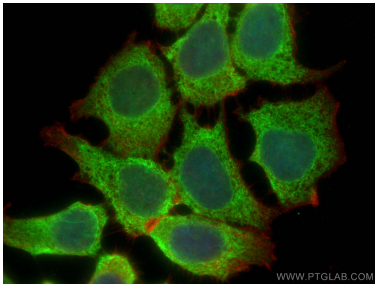
Immunohistochemical analysis of paraffin-embedded human breast cancer tissue slide using 13860-1-AP (AEG-1/MTDH-Specific antibody) at dilution of 1:400 (under 10x lens). Heat mediated antigen retrieval with Tris-EDTA buffer (pH 9.0).



Immunohistochemical analysis of paraffin-embedded human breast cancer tissue slide using 13860-1-AP (AEG-1/MTDH-Specific antibody) at dilution of 1:400 (under 40x lens). Heat mediated antigen retrieval with Tris-EDTA buffer (pH 9.0).



IP result of anti-AEG-1/MTDH-Specific (IP:13860-1-AP, 3ug; Detection:13860-1-AP 1:1000) with MCF-7 cells lysate 3250ug.



Immunofluorescent analysis of (4% PFA) fixed MCF-7 cells using AEG-1/MTDH-Specific antibody (13860-1-AP) at dilution of 1:400 and CoraLite®488-Conjugated AffiniPure Goat Anti-Rabbit IgG(H+L), CL594-Phalloidin (red).