

For Research Use Only

CCPG1 Polyclonal antibody

Catalog Number: 13861-1-AP

Featured Product

20 Publications



Basic Information

Catalog Number:

13861-1-AP

Size:

150ul, Concentration: 600 ug/ml by Nanodrop;

Source:

Rabbit

Isotype:

IgG

Immunogen Catalog Number:

AG4841

GenBank Accession Number:

BC034914

GeneID (NCBI):

9236

UNIPROT ID:

Q9ULG6

Full Name:

cell cycle progression 1

Calculated MW:

87 kDa

Observed MW:

110 kDa

Purification Method:

Antigen affinity purification

Recommended Dilutions:

WB 1:500-1:1000

IHC 1:50-1:500

IF/ICC 1:200-1:800

Applications

Tested Applications:

WB, IHC, IF/ICC, ELISA

Cited Applications:

WB, IHC, IP

Species Specificity:

human

Cited Species:

human, mouse, rat

Note-IHC: suggested antigen retrieval with TE buffer pH 9.0; (*) Alternatively, antigen retrieval may be performed with citrate buffer pH 6.0

Positive Controls:

WB : HepG2 cells, L02 cells, THP-1 cells

IHC : human stomach cancer tissue,

IF/ICC : HepG2 cells,

Background Information

Cell-cycle progression gene 1 (CCPG1) is a receptor for ER stress-induced ER-phagy. CCPG1 localizes to perinuclear ER and in small foci at the ER periphery. It contains a LIR at the N-terminal cytosolic domain engaging LC3/GABARAP. (PMID: 29802216, PMID: 29290589)

Notable Publications

Author	Pubmed ID	Journal	Application
Svenja Zielke	33111629	Autophagy	WB
Maria Sol Herrera-Cruz	34743744	Biol Direct	WB
Corey N Cunningham	31176671	Mol Cell	WB

Storage

Storage:

Store at -20°C. Stable for one year after shipment.

Storage Buffer:

PBS with 0.02% sodium azide and 50% glycerol pH 7.3.

Aliquoting is unnecessary for -20°C storage

*** 20ul sizes contain 0.1% BSA

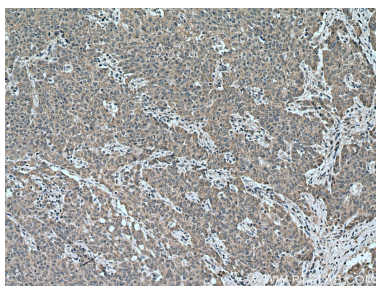
For technical support and original validation data for this product please contact:

T: 1 (888) 4PTGLAB (1-888-478-4522) (toll free in USA), or 1(312) 455-8498 (outside USA)

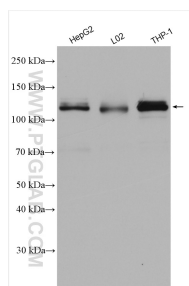
E: proteintech@ptglab.com
W: ptglab.com

This product is exclusively available under Proteintech Group brand and is not available to purchase from any other manufacturer.

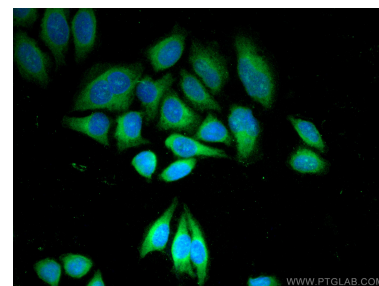
Selected Validation Data



Immunohistochemical analysis of paraffin-embedded human stomach cancer tissue slide using 13861-1-AP (CCPG1 antibody) at dilution of 1:200 (under 10x lens). Heat mediated antigen retrieval with Tris-EDTA buffer (pH 9.0).



Various lysates were subjected to SDS PAGE followed by western blot with 13861-1-AP (CCPG1 antibody) at dilution of 1:800 incubated at room temperature for 1.5 hours.



Immunofluorescent analysis of (-20°C Methanol) fixed HepG2 cells using CCPG1 antibody (13861-1-AP) at dilution of 1:400 and CoraLite®488-Conjugated Goat Anti-Rabbit IgG(H+L).