

For Research Use Only

# PKC Iota Polyclonal antibody

Catalog Number: 13883-1-AP

Featured Product

8 Publications



## Basic Information

### Catalog Number:

13883-1-AP

### Size:

150ul, Concentration: 550 ug/ml by Nanodrop;

### Source:

Rabbit

### Isotype:

IgG

### Immunogen Catalog Number:

AG4990

### GenBank Accession Number:

BC022016

### GeneID (NCBI):

5584

### UNIPROT ID:

P41743

### Full Name:

protein kinase C, iota

### Calculated MW:

68 kDa

### Observed MW:

67 kDa

### Purification Method:

Antigen affinity purification

### Recommended Dilutions:

WB 1:1000-1:6000

IP 0.5-4.0 ug for 1.0-3.0 mg of total protein lysate

IHC 1:50-1:500

IF/ICC 1:200-1:800

## Applications

### Tested Applications:

WB, IHC, IF/ICC, FC (Intra), IP, ELISA

### Cited Applications:

WB, IHC, IF, IP, CoIP

### Species Specificity:

human

### Cited Species:

human, mouse, chicken

**Note-IHC: suggested antigen retrieval with TE buffer pH 9.0; (\*) Alternatively, antigen retrieval may be performed with citrate buffer pH 6.0**

### Positive Controls:

WB : HeLa cells, MCF-7 cells

IP : HeLa cells,

IHC : human breast cancer tissue, human lung cancer tissue

IF/ICC : HeLa cells,

## Notable Publications

Author	Pubmed ID	Journal	Application
Wei Gao	33234130	Mol Cancer	WB,IF
Liu Liu	31410027	Onco Targets Ther	WB,IHC
Fangfei Li	35173550	Int J Biol Sci	WB

## Storage

### Storage:

Store at -20°C. Stable for one year after shipment.

### Storage Buffer:

PBS with 0.02% sodium azide and 50% glycerol, pH7.3

Aliquoting is unnecessary for -20°C storage

\*\*\* 20ul sizes contain 0.1% BSA

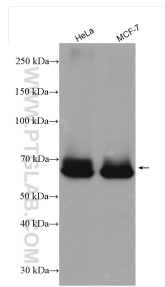
For technical support and original validation data for this product please contact:

T: 1 (888) 4PTGLAB (1-888-478-4522) (toll free in USA), or 1(312) 455-8498 (outside USA)

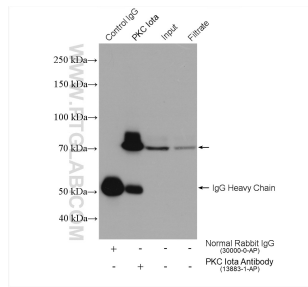
E: [proteintech@ptglab.com](mailto:proteintech@ptglab.com)  
W: [ptglab.com](http://ptglab.com)

This product is exclusively available under Proteintech Group brand and is not available to purchase from any other manufacturer.

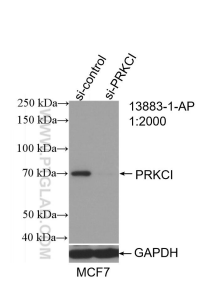
## Selected Validation Data



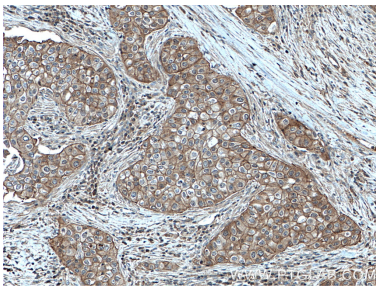
Various lysates were subjected to SDS PAGE followed by western blot with 13883-1-AP (PKC iota antibody) at dilution of 1:3000 incubated at room temperature for 1.5 hours.



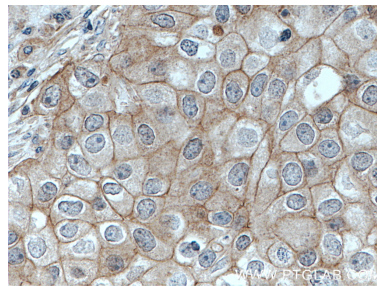
IP result of anti-PKC iota (IP:13883-1-AP, 4ug; Detection:13883-1-AP 1:2000) with HeLa cells lysate 1720 ug.



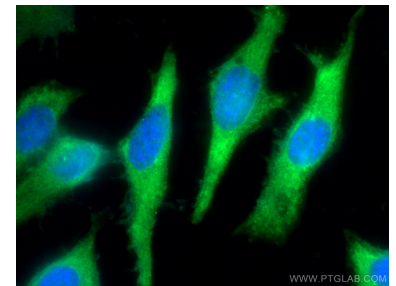
WB result of PKC iota antibody (13883-1-AP; 1:2000; incubated at room temperature for 1.5 hours) with sh-Control and sh-PKC iota transfected MCF-7 cells.



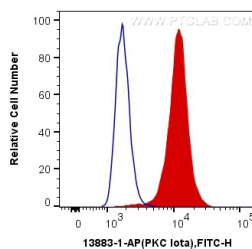
Immunohistochemical analysis of paraffin-embedded human breast cancer tissue slide using 13883-1-AP (PKC iota antibody) at dilution of 1:200 (under 10x lens). Heat mediated antigen retrieval with Tris-EDTA buffer (pH 9.0).



Immunohistochemical analysis of paraffin-embedded human breast cancer tissue slide using 13883-1-AP (PKC iota antibody) at dilution of 1:200 (under 40x lens). Heat mediated antigen retrieval with Tris-EDTA buffer (pH 9.0).



Immunofluorescent analysis of (-20°C Methanol) fixed HeLa cells using PKC iota antibody (13883-1-AP) at dilution of 1:400 and CoraLite®488-Conjugated Goat Anti-Rabbit IgG(H+L).



1X10<sup>6</sup> HeLa cells were intracellularly stained with 0.2 ug Anti-Human PKC iota (13883-1-AP) and CoraLite®488-Conjugated Goat Anti-Rabbit IgG(H+L) at dilution 1:1000 (red), or 0.2 ug Control Antibody. Cells were fixed with 4% PFA and permeabilized with Flow Cytometry Perm Buffer (PF00011-C).