

For Research Use Only

GREM2 Polyclonal antibody

Catalog Number: 13892-1-AP

6 Publications



Basic Information

Catalog Number:

13892-1-AP

Size:

150ul, Concentration: 600 ug/ml by Nanodrop and 593 ug/ml by Bradford method using BSA as the standard;

Source:

Rabbit

Isotype:

IgG

Immunogen Catalog Number:

AG4854

GenBank Accession Number:

BC046632

GeneID (NCBI):

64388

UNIPROT ID:

Q9H772

Full Name:

gremlin 2, cysteine knot superfamily, homolog (Xenopus laevis)

Calculated MW:

168 aa, 19 kDa

Purification Method:

Antigen affinity purification

Recommended Dilutions:

IHC 1:50-1:500

IF-P 1:50-1:500

Applications

Tested Applications:

IHC, IF-P, ELISA

Cited Applications:

WB, IHC, IF

Species Specificity:

human, mouse

Cited Species:

human, mouse

Note-IHC: suggested antigen retrieval with TE buffer pH 9.0; (*) Alternatively, antigen retrieval may be performed with citrate buffer pH 6.0

Positive Controls:

IHC: mouse ovary tissue, human ovary tissue, human kidney tissue, mouse kidney tissue

IF-P: mouse kidney tissue, mouse ovary tissue

Notable Publications

Author	Pubmed ID	Journal	Application
Masataka Chihara	25041854	Am J Pathol	IHC
Jeffery Bylund	28125926	Stem Cells Dev	IF
Myoung Seok Ko	39757007	Int J Stem Cells	IHC

Storage

Storage:

Store at -20°C. Stable for one year after shipment.

Storage Buffer:

PBS with 0.02% sodium azide and 50% glycerol pH 7.3.

Aliquoting is unnecessary for -20°C storage

*** 20ul sizes contain 0.1% BSA

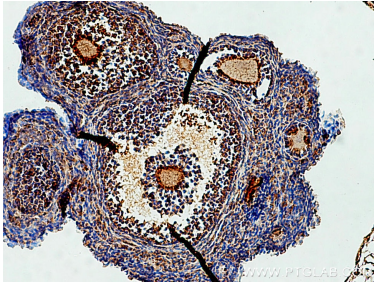
For technical support and original validation data for this product please contact:

T: 1 (888) 4PTGLAB (1-888-478-4522) (toll free in USA), or 1(312) 455-8498 (outside USA)

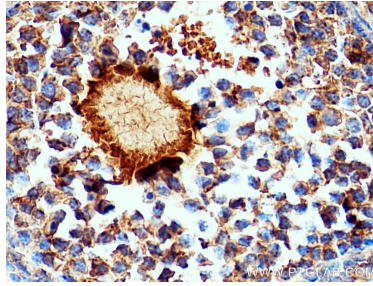
E: proteintech@ptglab.com
W: ptglab.com

This product is exclusively available under Proteintech Group brand and is not available to purchase from any other manufacturer.

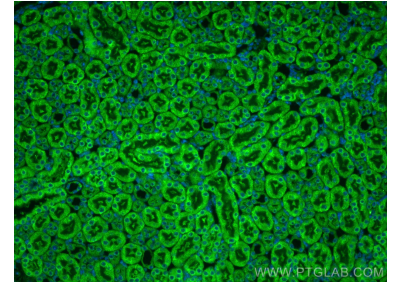
Selected Validation Data



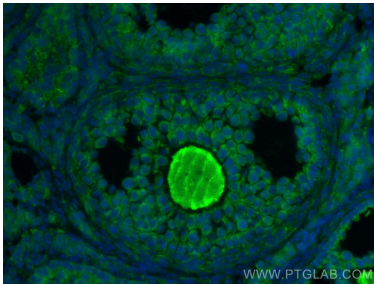
Immunohistochemical analysis of paraffin-embedded mouse ovary tissue slide using 13892-1-AP (GREM2 antibody) at dilution of 1:200 (under 10x lens). Heat mediated antigen retrieval with Tris-EDTA buffer (pH 9.0).



Immunohistochemical analysis of paraffin-embedded mouse ovary tissue slide using 13892-1-AP (GREM2 antibody) at dilution of 1:200 (under 40x lens). Heat mediated antigen retrieval with Tris-EDTA buffer (pH 9.0).



Immunofluorescent analysis of (4% PFA) fixed mouse kidney tissue using GREM2 antibody (13892-1-AP) at dilution of 1:200 and CoraLite®488-Conjugated Goat Anti-Rabbit IgG(H+L).



Immunofluorescent analysis of (4% PFA) fixed mouse ovary tissue using GREM2 antibody (13892-1-AP) at dilution of 1:200 and CoraLite®488-Conjugated Goat Anti-Rabbit IgG(H+L).