

For Research Use Only

# GTPBP4 Polyclonal antibody

Catalog Number: 13897-1-AP

Featured Product

6 Publications



## Basic Information

### Catalog Number:

13897-1-AP

### Size:

150ul, Concentration: 550 ug/ml by Nanodrop and 367 ug/ml by Bradford method using BSA as the standard;

### Source:

Rabbit

### Isotype:

IgG

### Immunogen Catalog Number:

AG4859

### GenBank Accession Number:

BC038975

### GeneID (NCBI):

23560

### UNIPROT ID:

Q9BZE4

### Full Name:

GTP binding protein 4

### Calculated MW:

634 aa, 74 kDa

### Observed MW:

74 kDa

### Purification Method:

Antigen affinity purification

### Recommended Dilutions:

WB 1:2000-1:8000

IP 0.5-4.0 ug for 1.0-3.0 mg of total protein lysate

IF/ICC 1:200-1:800

## Applications

### Tested Applications:

WB, IF/ICC, IP, ELISA

### Cited Applications:

WB, IHC, IF

### Species Specificity:

human, mouse

### Cited Species:

human, mouse, drosophila

### Positive Controls:

WB: HeLa cells, mouse testis tissue, human kidney tissue, HepG2 cells

IP: HeLa cells, mouse testis tissue

IF/ICC: MDCK cells,

## Background Information

GTP-binding proteins are GTPases and function as molecular switches that can flip between two states: active, when GTP is bound, and inactive, when GDP is bound. 'Active' in this context usually means that the molecule acts as a signal to trigger other events in the cell. When an extracellular ligand binds to a G-protein-linked receptor, the receptor changes its conformation and switches on the trimeric G proteins that associate with it by causing them to eject their GDP and replace it with GTP. The switch is turned off when the G protein hydrolyzes its own bound GTP, converting it back to GDP. But before that occurs, the active protein has an opportunity to diffuse away from the receptor and deliver its message for a prolonged period to its downstream target.

## Notable Publications

Author	Pubmed ID	Journal	Application
Zhiqian Zhang	33134380	Biomed Res Int	WB
Haitao Yu	27720713	Biochem Biophys Res Commun	WB, IHC
Andrew J Finch	21536732	Genes Dev	WB

## Storage

### Storage:

Store at -20°C. Stable for one year after shipment.

### Storage Buffer:

PBS with 0.02% sodium azide and 50% glycerol pH 7.3.

Aliquoting is unnecessary for -20°C storage

\*\*\* 20ul sizes contain 0.1% BSA

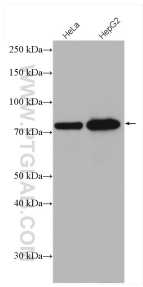
For technical support and original validation data for this product please contact:

T: 1 (888) 4PTGLAB (1-888-478-4522) (toll free in USA), or 1(312) 455-8498 (outside USA)

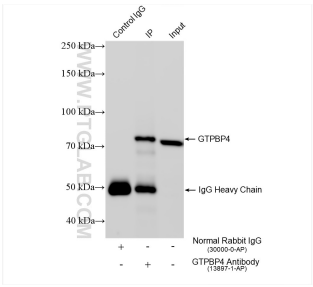
E: [proteintech@ptglab.com](mailto:proteintech@ptglab.com)  
W: [ptglab.com](http://ptglab.com)

This product is exclusively available under Proteintech Group brand and is not available to purchase from any other manufacturer.

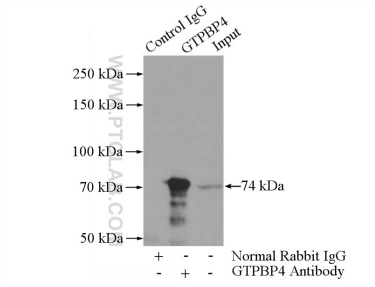
Selected Validation Data



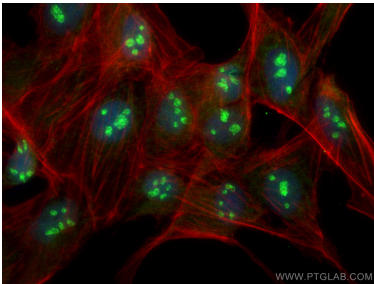
Various lysates were subjected to SDS PAGE followed by western blot with 13897-1-AP (GTPBP4 antibody) at dilution of 1:8000 incubated at room temperature for 1.5 hours.



IP result of anti-GTPBP4 (IP:13897-1-AP, 4ug; Detection:13897-1-AP 1:5000) with HeLa cells lysate 1280 ug.



IP result of anti-GTPBP4 (IP:13897-1-AP, 4ug; Detection:13897-1-AP 1:800) with mouse testis tissue lysate 4000ug.



Immunofluorescent analysis of (4% PFA) fixed MDCK cells using GTPBP4 antibody (13897-1-AP) at dilution of 1:400 and CoraLite® 488-Conjugated AffiniPure Goat Anti-Rabbit IgG(H+L) (SA00013-2), CL594-Phalloidin (red).