

For Research Use Only

KLHDC3 Polyclonal antibody

Catalog Number: 13905-1-AP

1 Publications



Basic Information

Catalog Number: 13905-1-AP	GenBank Accession Number: BC041793	Purification Method: Antigen affinity purification
Size: 150ul , Concentration: 520 µg/ml by Bradford method using BSA as the standard;	GeneID (NCBI): 116138	Recommended Dilutions: IHC 1:20-1:200 IF 1:20-1:200
Source: Rabbit	Full Name: kelch domain containing 3	
Isotype: IgG	Calculated MW: 382 aa, 43 kDa	
Immunogen Catalog Number: AG4879		

Applications

Tested Applications: IF, IHC, ELISA	Positive Controls: IHC : human testis tissue, IF : PC-3 cells,
Cited Applications: WB	
Species Specificity: human	
Cited Species: human	
Note-IHC: suggested antigen retrieval with TE buffer pH 9.0; (*) Alternatively, antigen retrieval may be performed with citrate buffer pH 6.0	

Background Information

The BTB (Broad-Complex, Tramtrack and Bric a brac) domain, also known as the POZ (Poxvirus and Zinc finger) domain, is an N-terminal homodimerization domain that contains multiple copies of kelch repeats and/or C2H2-type zinc fingers. Proteins that contain BTB domains are thought to be involved in transcriptional regulation via control of chromatin structure and function. The Kelch domain-containing protein 3 (KLHDC3), also designated PEAS, contains 5 Kelch repeats and may be involved in meiotic recombination process. The gene encoding KLHDC3 maps to chromosome 6, which contains around 1,200 genes within 170 million base pairs of sequence. Deletion of a portion of the q arm of chromosome 6 is associated with early onset intestinal cancer suggesting the presence of a cancer susceptibility locus. Porphyria cutanea tarda, Parkinson's disease, Stickler syndrome, 21-hydroxylase deficiency and maple syrup urine disease are also associated with genes on chromosome 6. KLHDC3 protein is mainly expressed in cytoplasm, also found in meiotic chromatin.

Notable Publications

Author	Pubmed ID	Journal	Application
Magda Wąchalska	37808699	bioRxiv	WB

Storage

Storage:
Store at -20°C. Stable for one year after shipment.
Storage Buffer:
PBS with 0.02% sodium azide and 50% glycerol pH 7.3.
Aliquoting is unnecessary for -20°C storage

*** 20ul sizes contain 0.1% BSA

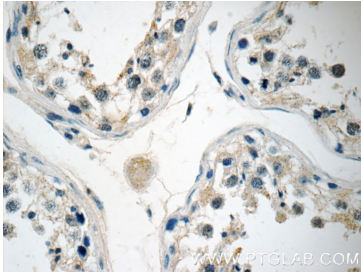
For technical support and original validation data for this product please contact:

T: 1 (888) 4PTGLAB (1-888-478-4522) (toll free in USA), or 1(312) 455-8498 (outside USA)

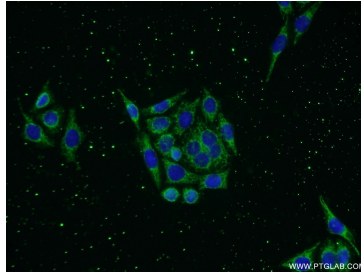
E: proteintech@ptglab.com
W: ptglab.com

This product is exclusively available under Proteintech Group brand and is not available to purchase from any other manufacturer.

Selected Validation Data



Immunohistochemical analysis of paraffin-embedded human testis tissue slide using 13905-1-AP (KLHDC3 Antibody) at dilution of 1:50 (under 40x lens).



Immunofluorescent analysis of PC-3 cells using 13905-1-AP (KLHDC3 antibody) at dilution of 1:50 and Alexa Fluor 488-conjugated AffiniPure Goat Anti-Rabbit IgG(H+L).