

For Research Use Only

# SPAG8 Polyclonal antibody

Catalog Number: 13915-1-AP

2 Publications



## Basic Information

### Catalog Number:

13915-1-AP

### Size:

150ul, Concentration: 450 ug/ml by Nanodrop and 193 ug/ml by Bradford method using BSA as the standard;

### Source:

Rabbit

### Isotype:

IgG

### Immunogen Catalog Number:

AG4910

### GenBank Accession Number:

BC019247

### GeneID (NCBI):

26206

### UNIPROT ID:

Q99932

### Full Name:

sperm associated antigen 8

### Calculated MW:

45 kDa, 54 kDa

### Observed MW:

56-70 kDa

### Purification Method:

Antigen affinity purification

### Recommended Dilutions:

WB 1:500-1:1000

IP 0.5-4.0 ug for 1.0-3.0 mg of total protein lysate

IHC 1:20-1:200

IF/ICC 1:200-1:800

## Applications

### Tested Applications:

WB, IHC, IF/ICC, IP, ELISA

### Cited Applications:

WB, IHC

### Species Specificity:

human, mouse, rat

### Cited Species:

human, mouse

**Note-IHC: suggested antigen retrieval with TE buffer pH 9.0; (\*) Alternatively, antigen retrieval may be performed with citrate buffer pH 6.0**

### Positive Controls:

WB : DU 145 cells,

IP : mouse testis tissue,

IHC : human prostate cancer tissue,

IF/ICC : PC-3 cells,

## Background Information

SPAG8, also named as Sperm-associated antigen 8 or HSD-1, is a 426 amino acid protein, which is expressed in testis (germ cells), but not in liver, kidney, prostate and small intestine. SPAG8 may play a role in fertility and microtubule formation through interaction with RANBP9. SPAG8 as testis-specific protein is produced during male germ cell differentiation and functions in a germ cell type- and stage-specific manner during spermatogenesis.

## Notable Publications

Author	Pubmed ID	Journal	Application
Gina Esther Merges	35608054	Development	WB
Sili?a Karina K	21150711	J Immunother	IHC

## Storage

### Storage:

Store at -20°C. Stable for one year after shipment.

### Storage Buffer:

PBS with 0.02% sodium azide and 50% glycerol pH 7.3.

Aliquoting is unnecessary for -20°C storage

\*\*\* 20ul sizes contain 0.1% BSA

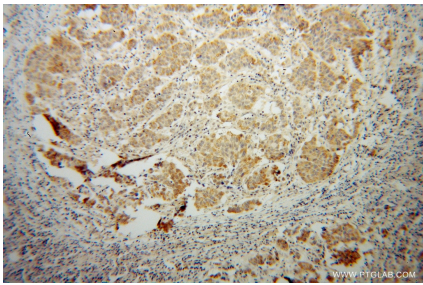
For technical support and original validation data for this product please contact:

T: 1 (888) 4PTGLAB (1-888-478-4522) (toll free in USA), or 1(312) 455-8498 (outside USA)

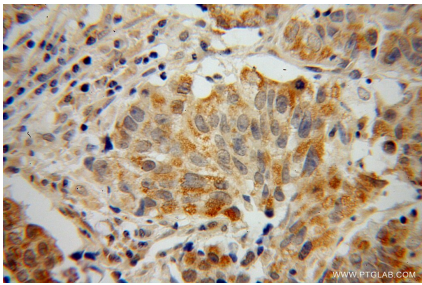
E: [proteintech@ptglab.com](mailto:proteintech@ptglab.com)  
W: [ptglab.com](http://ptglab.com)

This product is exclusively available under Proteintech Group brand and is not available to purchase from any other manufacturer.

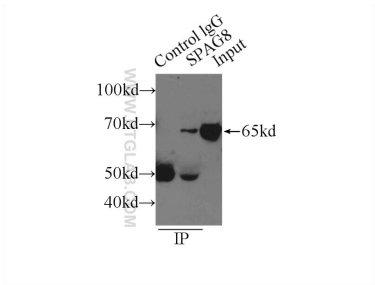
Selected Validation Data



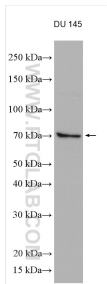
Immunohistochemical analysis of paraffin-embedded human prostate cancer using 13915-1-AP (SPAG8 antibody) at dilution of 1:100 (under 10x lens).



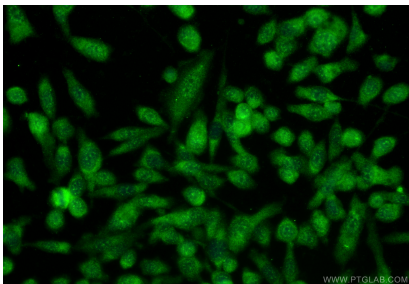
Immunohistochemical analysis of paraffin-embedded human prostate cancer using 13915-1-AP (SPAG8 antibody) at dilution of 1:100 (under 40x lens).



IP result of anti-SPAG8 (IP:13915-1-AP, 3ug; Detection:13915-1-AP 1:500) with mouse testis tissue lysate 6000ug.



DU 145 cells lysates were subjected to SDS PAGE followed by western blot with 13915-1-AP (SPAG8 antibody) at dilution of 1:600 incubated at room temperature for 1.5 hours.



Immunofluorescent analysis of (-20°C Ethanol) fixed PC-3 cells using SPAG8 antibody (13915-1-AP) at dilution of 1:400 and CoraLite®488-Conjugated Goat Anti-Rabbit IgG(H+L) (SA00013-2).