

For Research Use Only

PTPRE Polyclonal antibody

Catalog Number: 13922-1-AP

Featured Product

3 Publications



Basic Information

Catalog Number:

13922-1-AP

Size:

150ul, Concentration: 450 ug/ml by Nanodrop and 267 ug/ml by Bradford method using BSA as the standard;

Source:

Rabbit

Isotype:

IgG

Immunogen Catalog Number:

AG4932

GenBank Accession Number:

BC050062

GeneID (NCBI):

5791

UNIPROT ID:

P23469

Full Name:

protein tyrosine phosphatase, receptor type, E

Calculated MW:

81 kDa

Observed MW:

81 kDa

Purification Method:

Antigen affinity purification

Recommended Dilutions:

WB: 1:200-1:1000

IHC: 1:50-1:500

Applications

Tested Applications:

WB, IHC, ELISA

Cited Applications:

WB, IHC

Species Specificity:

human

Cited Species:

human

Positive Controls:

WB : HL-60 cells,

IHC : human breast cancer tissue, human liver tissue

Note-IHC: suggested antigen retrieval with *TE buffer pH 9.0*; (*) Alternatively, antigen retrieval may be performed with *citrate buffer pH 6.0*

Notable Publications

Author	Pubmed ID	Journal	Application
Bingqing Chen	33344226	Front Oncol	WB
Renshun Dong	38458013	Biomed Pharmacother	IHC
Chunyang Cai	38172938	Clin Epigenetics	WB

Storage

Storage:

Store at -20°C. Stable for one year after shipment.

Storage Buffer:

PBS with 0.02% sodium azide and 50% glycerol, pH7.3

Aliquoting is unnecessary for -20°C storage

***** 20ul sizes contain 0.1% BSA**

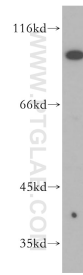
For technical support and original validation data for this product please contact:

T: 1 (888) 4PTGLAB (1-888-478-4522) (toll free in USA), or 1(312) 455-8498 (outside USA)

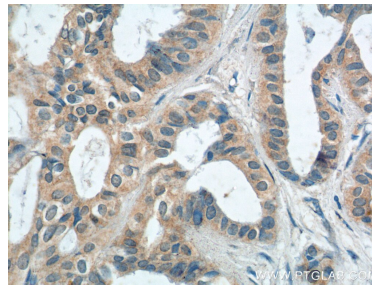
E: proteintech@ptglab.com
W: ptglab.com

This product is exclusively available under Proteintech Group brand and is not available to purchase from any other manufacturer.

Selected Validation Data



HL-60 cells were subjected to SDS PAGE followed by western blot with 13922-1-AP (PTPRE antibody) at dilution of 1:300 incubated at room temperature for 1.5 hours.



Immunohistochemical analysis of paraffin-embedded human breast cancer tissue slide using 13922-1-AP (PTPRE Antibody) at dilution of 1:200 (under 40x lens).