

For Research Use Only

SMCP Polyclonal antibody

Catalog Number: 13936-1-AP



Basic Information

Catalog Number: 13936-1-AP	GenBank Accession Number: BC014593	Purification Method: Antigen affinity purification
Size: 150ul , Concentration: 500 ug/ml by Nanodrop;	GeneID (NCBI): 4184	Recommended Dilutions: WB: 1:1000-1:8000
Source: Rabbit	UNIPROT ID: P49901	
Isotype: IgG	Full Name: sperm mitochondria-associated cysteine-rich protein	
Immunogen Catalog Number: AG4984	Calculated MW: 13 kDa	
	Observed MW: 12-25 kDa	

Applications

Tested Applications: WB, ELISA	Positive Controls: WB : human testis tissue,
Species Specificity: human	

Background Information

SMCP, also named as MCS and MCSP, is a cysteine- and proline-rich structural protein that is closely associated with the keratinous capsules of sperm mitochondria in the mitochondrial sheath surrounding the outer dense fibers and axoneme. It is involved in sperm motility.

Storage

Storage:
Store at -20°C. Stable for one year after shipment.
Storage Buffer:
PBS with 0.02% sodium azide and 50% glycerol, pH7.3
Aliquoting is unnecessary for -20°C storage

*** 20ul sizes contain 0.1% BSA

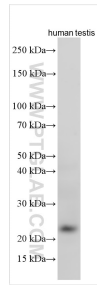
For technical support and original validation data for this product please contact:

T: 1 (888) 4PTGLAB (1-888-478-4522) (toll free in USA), or 1(312) 455-8498 (outside USA)

E: proteintech@ptglab.com
W: ptglab.com

This product is exclusively available under Proteintech Group brand and is not available to purchase from any other manufacturer.

Selected Validation Data



Various lysates were subjected to SDS PAGE followed by western blot with 13936-1-AP (SMCP antibody) at dilution of 1:4000 incubated at room temperature for 1.5 hours.