

For Research Use Only

ALDH1A2 Polyclonal antibody

Catalog Number: 13951-1-AP

13 Publications



Basic Information

Catalog Number:

13951-1-AP

Size:

150ul, Concentration: 550 ug/ml by Nanodrop;

Source:

Rabbit

Isotype:

IgG

Immunogen Catalog Number:

AG5062

GenBank Accession Number:

BC030589

GeneID (NCBI):

8854

UNIPROT ID:

O94788

Full Name:

aldehyde dehydrogenase 1 family, member A2

Calculated MW:

518 aa, 57 kDa

Observed MW:

53-57 kDa

Purification Method:

Antigen affinity purification

Recommended Dilutions:

WB 1:5000-1:50000

IP 0.5-4.0 ug for 1.0-3.0 mg of total protein lysate

IHC 1:50-1:500

Applications

Tested Applications:

WB, IHC, IP, ELISA

Cited Applications:

WB, IHC

Species Specificity:

human, mouse, rat

Cited Species:

human, mouse, rat

Positive Controls:

WB : K-562 cells, mouse spleen tissue, mouse testis tissue, rat spleen tissue, rat testis tissue

IP : mouse testis tissue,

IHC : human testis tissue,

Note-IHC: suggested antigen retrieval with TE buffer pH 9.0; (*) Alternatively, antigen retrieval may be performed with citrate buffer pH 6.0

Background Information

ALDH1A2(aldehyde dehydrogenase family 1 member A2) is also named as RALDH2(retinal dehydrogenase 2) and belongs to the aldehyde dehydrogenase family. It is a cytosolic homotetramer(56.7 kDa subunits) exhibiting complex expression patterns throughout embryonic development. ALDH1A2 plays a role in retinoid metabolism during embryonic development where it is considered to be the major retinoic acid-synthesizing enzyme during early embryogenesis(PMID:20735668). Its expression is reduced in primary prostate tumors compared with normal prostate tissue suggested that it is normally expressed in the epithelial compartment of prostate tissue(PMID:16166285).It has 2 isoforms produced by alternative splicing.

Notable Publications

Author	Pubmed ID	Journal	Application
Bilbija Dusan D	23028599	PLoS One	WB
My-Thanh Beedle	30247516	Biol Reprod	IHC
Carlos J Diaz Osterman	31478830	Elife	WB

Storage

Storage:

Store at -20°C. Stable for one year after shipment.

Storage Buffer:

PBS with 0.02% sodium azide and 50% glycerol

Aliquoting is unnecessary for -20°C storage

*** 20ul sizes contain 0.1% BSA

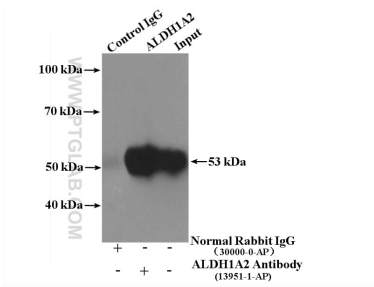
For technical support and original validation data for this product please contact:

T: 1 (888) 4PTGLAB (1-888-478-4522) (toll free in USA), or 1(312) 455-8498 (outside USA)

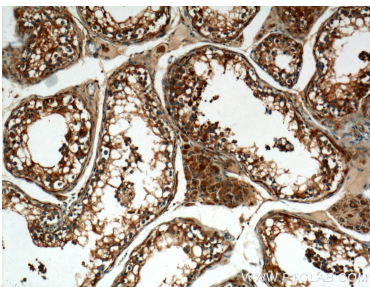
E: proteintech@ptglab.com
W: ptglab.com

This product is exclusively available under Proteintech Group brand and is not available to purchase from any other manufacturer.

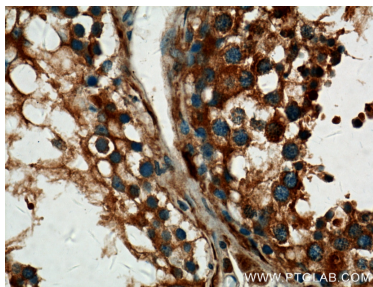
Selected Validation Data



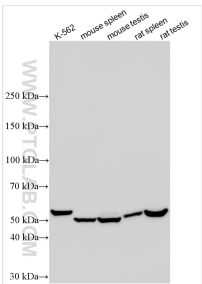
IP result of anti-ALDH1A2 (IP:13951-1-AP, 4ug; Detection:13951-1-AP 1:300) with mouse testis tissue lysate 4400ug.



Immunohistochemical analysis of paraffin-embedded human testis tissue slide using 13951-1-AP (ALDH1A2 Antibody) at dilution of 1:200 (under 10x lens).



Immunohistochemical analysis of paraffin-embedded human testis tissue slide using 13951-1-AP (ALDH1A2 Antibody) at dilution of 1:200 (under 40x lens).



Various lysates were subjected to SDS PAGE followed by western blot with 13951-1-AP (ALDH1A2 antibody) at dilution of 1:10000 incubated at room temperature for 1.5 hours.