

For Research Use Only

PDE8A Polyclonal antibody

Catalog Number: 13956-1-AP

5 Publications



Basic Information

Catalog Number:

13956-1-AP

Size:

150ul, Concentration: 700 ug/ml by Nanodrop and 420 ug/ml by Bradford method using BSA as the standard;

Source:

Rabbit

Isotype:

IgG

Immunogen Catalog Number:

AG5069

GenBank Accession Number:

BC060762

GeneID (NCBI):

5151

UNIPROT ID:

O60658

Full Name:

phosphodiesterase 8A

Calculated MW:

93 kDa

Observed MW:

93 kDa, 88 kDa

Purification Method:

Antigen affinity purification

Recommended Dilutions:

WB 1:500-1:2400

IP 0.5-4.0 ug for 1.0-3.0 mg of total protein lysate

IHC 1:20-1:200

Applications

Tested Applications:

WB, IP, IHC, ELISA

Cited Applications:

WB, IF

Species Specificity:

human, mouse

Cited Species:

human, mouse, pig

Note-IHC: suggested antigen retrieval with TE buffer pH 9.0; (*) Alternatively, antigen retrieval may be performed with citrate buffer pH 6.0

Positive Controls:

WB : mouse testis tissue, mouse spleen tissue, SH-SY5Y cells

IP : mouse testis tissue,

IHC : human colon cancer tissue,

Background Information

PDE8A (high affinity cAMP-specific and IBMX-insensitive 3',5'-cyclic phosphodiesterase 8A) belongs to the cyclic nucleotide phosphodiesterase family and PDE8 subfamily. PDE8A plays a critical role in the modulation of at least one compartment of cAMP and hence PKA activity during β -adrenergic receptor (β AR) activation in ventricular myocytes (PMID:20353794). The full length protein contains several sites for protein phosphorylation, N-glycosylation, N-myristoylation, and amidation. It has 5 isoforms produced by alternative splicing with the molecular mass of 93 kDa, 88 kDa, 51 kDa and the isoform 4 and 5 have the same molecular mass of 66 kDa. (PMID:11738832).

Notable Publications

Author	Pubmed ID	Journal	Application
Matthew Riopel	32534258	Mol Metab	WB
Annick Bergeron	26724956	Reprod Fertl Dev	
Amel Lounas	31462694	Sci Rep	WB, IF

Storage

Storage:

Store at -20°C. Stable for one year after shipment.

Storage Buffer:

PBS with 0.02% sodium azide and 50% glycerol pH 7.3.

Aliquoting is unnecessary for -20°C storage

*** 20ul sizes contain 0.1% BSA

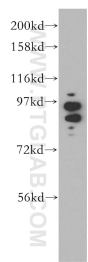
For technical support and original validation data for this product please contact:

T: 1 (888) 4PTGLAB (1-888-478-4522) (toll free in USA), or 1(312) 455-8498 (outside USA)

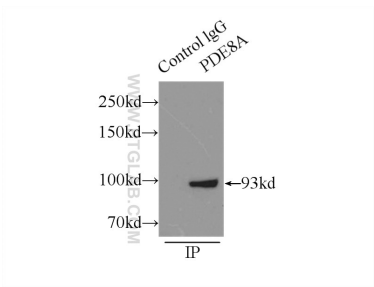
E: proteintech@ptglab.com
W: ptglab.com

This product is exclusively available under Proteintech Group brand and is not available to purchase from any other manufacturer.

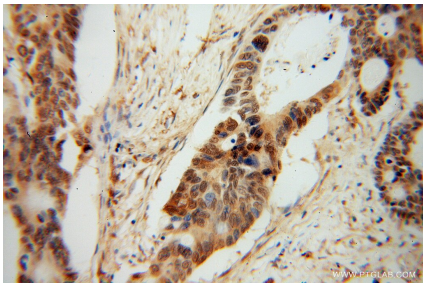
Selected Validation Data



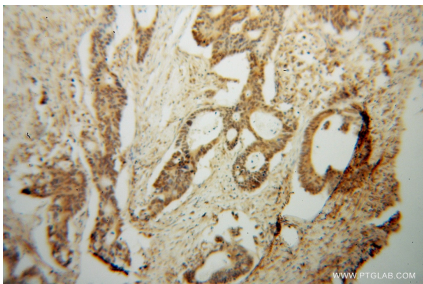
mouse testis tissue were subjected to SDS PAGE followed by western blot with 13956-1-AP (PDE8A antibody) at dilution of 1:1000 incubated at room temperature for 1.5 hours.



IP result of anti-PDE8A (IP:13956-1-AP, 5ug; Detection:13956-1-AP 1:1000) with mouse testis tissue lysate 8000ug.



Immunohistochemical analysis of paraffin-embedded human colon cancer using 13956-1-AP (PDE8A antibody) at dilution of 1:100 (under 40x lens).



Immunohistochemical analysis of paraffin-embedded human colon cancer using 13956-1-AP (PDE8A antibody) at dilution of 1:100 (under 10x lens).