

For Research Use Only

# ATE1 Polyclonal antibody

Catalog Number: 13973-1-AP

Featured Product



## Basic Information

### Catalog Number:

13973-1-AP

### Size:

150ul, Concentration: 700 ug/ml by Nanodrop;

### Source:

Rabbit

### Isotype:

IgG

### Immunogen Catalog Number:

AG5006

### GenBank Accession Number:

BC022026

### GeneID (NCBI):

11101

### UNIPROT ID:

O95260

### Full Name:

arginyltransferase 1

### Calculated MW:

59 kDa

### Observed MW:

59-65 kDa

### Purification Method:

Antigen affinity purification

### Recommended Dilutions:

WB 1:1000-1:6000

## Applications

### Tested Applications:

WB, ELISA

### Species Specificity:

human, mouse, rat

### Positive Controls:

WB : HepG2 cells, mouse liver tissue, HeLa cells, Jurkat cells

## Background Information

Arginyltransferases (ATE1s) are eukaryotic enzymes that catalyze the non-ribosomal, post-translational addition of the amino acid arginine to an acceptor protein. ATE1 plays critical roles in many biological functions including cardiovascular development, angiogenesis, adipogenesis, muscle contraction, and metastasis of cancer.

## Storage

### Storage:

Store at -20°C. Stable for one year after shipment.

### Storage Buffer:

PBS with 0.02% sodium azide and 50% glycerol pH 7.3.

Aliquoting is unnecessary for -20°C storage

\*\*\* 20ul sizes contain 0.1% BSA

For technical support and original validation data for this product please contact:

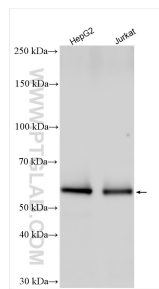
T: 1 (888) 4PTGLAB (1-888-478-4522) (toll free in USA), or 1(312) 455-8498 (outside USA)

E: [proteintech@ptglab.com](mailto:proteintech@ptglab.com)

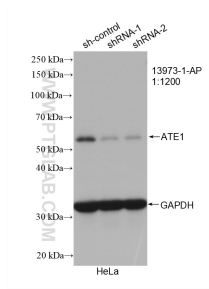
W: [ptglab.com](http://ptglab.com)

This product is exclusively available under Proteintech Group brand and is not available to purchase from any other manufacturer.

## Selected Validation Data



Various lysates were subjected to SDS PAGE followed by western blot with 13973-1-AP (ATE1 antibody) at dilution of 1:3000 incubated at room temperature for 1.5 hours.



WB result of ATE1 antibody (13973-1-AP; 1:1200; incubated at room temperature for 1.5 hours) with sh-Control and sh-ATE1 transfected HeLa cells.