

For Research Use Only

SERCA2/ATP2A2 Polyclonal antibody

Catalog Number: 13985-1-AP

5 Publications



Basic Information

Catalog Number:

13985-1-AP

Size:

150ul, Concentration: 160 µg/ml by Bradford method using BSA as the standard;

Source:

Rabbit

Isotype:

IgG

Immunogen Catalog Number:

AG5052

GenBank Accession Number:

BC035588

GeneID (NCBI):

488

UNIPROT ID:

P16615

Full Name:

ATPase, Ca⁺⁺ transporting, cardiac muscle, slow twitch 2

Calculated MW:

1042 aa, 115 kDa

Observed MW:

100 kDa

Purification Method:

Antigen affinity purification

Recommended Dilutions:

WB: 1:1000-1:6000

Applications

Tested Applications:

WB, ELISA

Cited Applications:

WB

Species Specificity:

human, mouse, rat

Cited Species:

human, mouse, rat

Positive Controls:

WB: mouse heart tissue,

Background Information

ATP2A2, also known as SERCA2 (Sarco/endoplasmic reticulum-type calcium transport ATPase 2), is a 110 kDa magnesium-dependent enzyme catalyzing the hydrolysis of ATP coupled with the translocation of calcium from the cytosol to the sarcoplasmic reticulum lumen. Human SERCA2 gene gives rise to several alternatively spliced isoforms: SERCA2a, SERCA2b and SERCA2c. SERCA2a and SERCA2c are mainly expressed in cardiac muscle, while SERCA2b is ubiquitously expressed in all cell types. This antibody can recognize all the above isoforms.

Notable Publications

| Author | Pubmed ID | Journal | Application |
|-------------|-----------|-------------------|-------------|
| Chao Quan | 30566039 | Circ Res | WB |
| Sicong Tian | 33929090 | Mol Nutr Food Res | WB |
| Feng Xu | 39317829 | J Mol Histol | WB |

Storage

Storage:

Store at -20°C. Stable for one year after shipment.

Storage Buffer:

PBS with 0.02% sodium azide and 50% glycerol, pH7.3

Aliquoting is unnecessary for -20°C storage

*** 20ul sizes contain 0.1% BSA

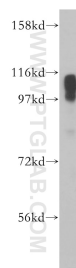
For technical support and original validation data for this product please contact:

T: 1 (888) 4PTGLAB (1-888-478-4522) (toll free in USA), or 1(312) 455-8498 (outside USA)

E: proteintech@ptglab.com
W: ptglab.com

This product is exclusively available under Proteintech Group brand and is not available to purchase from any other manufacturer.

Selected Validation Data



mouse heart tissue were subjected to SDS PAGE followed by western blot with 13985-1-AP (SERCA2 antibody) at dilution of 1:3000 incubated at room temperature for 1.5 hours.