

For Research Use Only

ALS2 Polyclonal antibody

Catalog Number: 13998-1-AP



Basic Information

Catalog Number:

13998-1-AP

Size:

150ul, Concentration: 600 ug/ml by Nanodrop and 200 ug/ml by Bradford method using BSA as the standard;

Source:

Rabbit

Isotype:

IgG

Immunogen Catalog Number:

AG5087

GenBank Accession Number:

BC029174

GeneID (NCBI):

57679

UNIPROT ID:

Q96Q42

Full Name:

amyotrophic lateral sclerosis 2 (juvenile)

Calculated MW:

1657 aa, 184 kDa

Observed MW:

185 kDa

Purification Method:

Antigen affinity purification

Recommended Dilutions:

WB 1:500-1:2000

IP 0.5-4.0 ug for 1.0-3.0 mg of total protein lysate

IHC 1:50-1:500

Applications

Tested Applications:

WB, IHC, IP, ELISA

Species Specificity:

human, mouse, rat

Note-IHC: suggested antigen retrieval with TE buffer pH 9.0; (*) Alternatively, antigen retrieval may be performed with citrate buffer pH 6.0

Positive Controls:

WB : mouse cerebellum tissue, HEK-293 cells, rat cerebellum tissue

IP : HEK-293 cells,

IHC : mouse cerebellum tissue,

Storage

Storage:

Store at -20°C. Stable for one year after shipment.

Storage Buffer:

PBS with 0.02% sodium azide and 50% glycerol, pH7.3

Aliquoting is unnecessary for -20°C storage

*** 20ul sizes contain 0.1% BSA

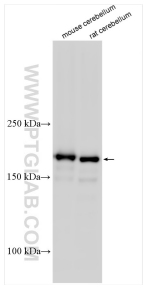
For technical support and original validation data for this product please contact:

T: 1 (888) 4PTGLAB (1-888-478-4522) (toll free in USA), or 1(312) 455-8498 (outside USA)

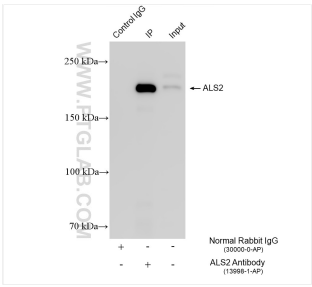
E: proteintech@ptglab.com
W: ptglab.com

This product is exclusively available under Proteintech Group brand and is not available to purchase from any other manufacturer.

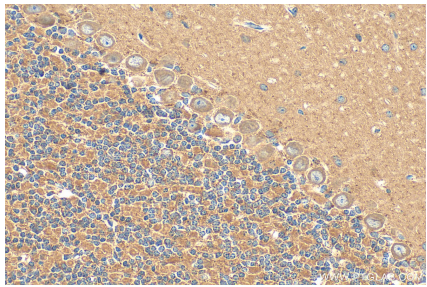
Selected Validation Data



Various lysates were subjected to SDS PAGE followed by western blot with 13998-1-AP (ALS2 antibody) at dilution of 1:1000 incubated at room temperature for 1.5 hours.



IP result of anti-ALS2 (IP:13998-1-AP, 4ug; Detection:13998-1-AP 1:800) with HEK-293 cells lysate 1920 ug.



Immunohistochemical analysis of paraffin-embedded mouse cerebellum tissue slide using 13998-1-AP (ALS2 antibody) at dilution of 1:200 (under 40x lens). Heat mediated antigen retrieval with Tris-EDTA buffer (pH 9.0).