

For Research Use Only

# ENPP1 Polyclonal antibody

Catalog Number: 14011-1-AP



## Basic Information

### Catalog Number:

14011-1-AP

### Size:

150ul , Concentration: 213 µg/ml by Bradford method using BSA as the standard;

### Source:

Rabbit

### Isotype:

IgG

### Immunogen Catalog Number:

AG5117

### GenBank Accession Number:

BC059375

### GeneID (NCBI):

5167

### UNIPROT ID:

P22413

### Full Name:

ectonucleotide pyrophosphatase/phosphodiesterase 1

### Calculated MW:

105 kDa

### Observed MW:

60 kDa

### Purification Method:

Antigen affinity purification

### Recommended Dilutions:

WB 1:500-1:3200

IP 0.5-4.0 ug for 1.0-3.0 mg of total protein lysate

## Applications

### Tested Applications:

WB, IP, ELISA

### Species Specificity:

human, mouse, rat

### Positive Controls:

WB : Raji cells,

IP : Raji cells,

## Storage

### Storage:

Store at -20°C. Stable for one year after shipment.

### Storage Buffer:

PBS with 0.02% sodium azide and 50% glycerol pH 7.3.

Aliquoting is unnecessary for -20°C storage

\*\*\* 20ul sizes contain 0.1% BSA

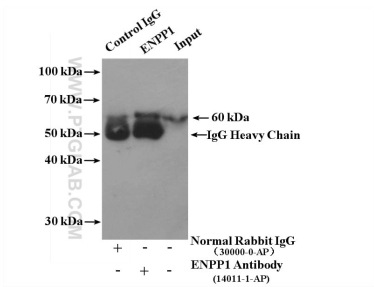
For technical support and original validation data for this product please contact:

T: 1 (888) 4PTGLAB (1-888-478-4522) (toll free in USA), or 1(312) 455-8498 (outside USA)

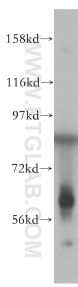
E: [proteintech@ptglab.com](mailto:proteintech@ptglab.com)  
W: [ptglab.com](http://ptglab.com)

This product is exclusively available under Proteintech Group brand and is not available to purchase from any other manufacturer.

Selected Validation Data



IP result of anti-ENPP1 (IP:14011-1-AP, 4ug;  
Detection:14011-1-AP 1:1000) with Raji cells lysate  
3200 ug.



Raji cells were subjected to SDS PAGE followed by  
western blot with 14011-1-AP (ENPP1 antibody) at  
dilution of 1:1000 incubated at room temperature  
for 1.5 hours.