

For Research Use Only

STAG1 Polyclonal antibody

Catalog Number: 14015-1-AP

2 Publications



Basic Information

| | | |
|--|--|--|
| Catalog Number: 14015-1-AP | GenBank Accession Number: BC064699 | Purification Method: Antigen affinity purification |
| Size: 150ul , Concentration: 300 ug/ml by Nanodrop and 327 ug/ml by Bradford method using BSA as the standard; | GeneID (NCBI): 10274 | Recommended Dilutions: WB 1:500-1:3000 IHC 1:200-1:1000 |
| Source: Rabbit | UNIPROT ID: Q8WVM7 | |
| Isotype: IgG | Full Name: stromal antigen 1 | |
| Immunogen Catalog Number: AG5123 | Calculated MW: 144 kDa | |
| | Observed MW: 155 kDa | |

Applications

| | |
|--|--|
| Tested Applications: WB, IHC, ELISA | Positive Controls: |
| Cited Applications: WB | WB : HEK-293T cells, HeLa cells, human heart tissue, Raji cells, Jurkat cells, MCF-7 cells, NIH/3T3 cells |
| Species Specificity: human, mouse | IHC : human stomach tissue, |
| Cited Species: human, rat | |
| Note-IHC: suggested antigen retrieval with TE buffer pH 9.0; (*) Alternatively, antigen retrieval may be performed with citrate buffer pH 6.0 | |

Background Information

STAG1, also named as SCC3 homolog 1, is a 1258 amino acid protein, which belongs to the SCC3 family. STAG1 interacts directly with RAD21 in cohesin complex and localizes in nucleus. STAG1 is a Component of cohesin complex, which is required for the cohesion of sister chromatids after DNA replication. The cohesin complex apparently forms a large proteinaceous ring within which sister chromatids can be trapped. At anaphase, the complex is cleaved and dissociates from chromatin, allowing sister chromatids to segregate. The cohesin complex may also play a role in spindle pole assembly during mitosis. The calculate molecular weight of STAG1 is 144 kDa, but modified STAG1 is about 145-150 kDa.

Notable Publications

| Author | Pubmed ID | Journal | Application |
|---------------|-----------|--------------------------|-------------|
| Gaoyang Chen | 35361779 | Bone Res | WB |
| Ena Oreskovic | 35149558 | Proc Natl Acad Sci U S A | WB |

Storage

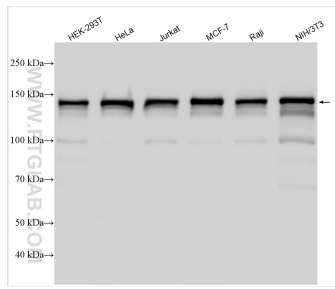
Storage:
Store at -20°C. Stable for one year after shipment.
Storage Buffer:
PBS with 0.02% sodium azide and 50% glycerol pH 7.3.
Aliquoting is unnecessary for -20°C storage

*** 20ul sizes contain 0.1% BSA

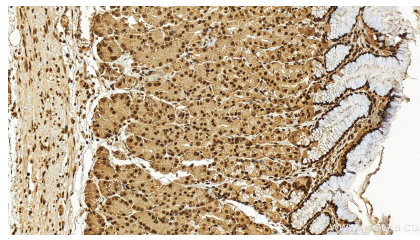
For technical support and original validation data for this product please contact:
T: 1 (888) 4PTGLAB (1-888-478-4522) (toll free in USA), or 1(312) 455-8498 (outside USA)
E: proteintech@ptglab.com
W: ptglab.com

This product is exclusively available under Proteintech Group brand and is not available to purchase from any other manufacturer.

Selected Validation Data



Various lysates were subjected to SDS PAGE followed by western blot with 14015-1-AP (STAG1 antibody) at dilution of 1:1500 incubated at room temperature for 1.5 hours.



Immunohistochemical analysis of paraffin-embedded human stomach tissue slide using 14015-1-AP (STAG1 antibody) at dilution of 1:200 (under 20x lens). Heat mediated antigen retrieval with Tris-EDTA buffer (pH 9.0).