

For Research Use Only

# AADACL1 Polyclonal antibody

Catalog Number: 14021-1-AP

5 Publications



## Basic Information

### Catalog Number:

14021-1-AP

### Size:

150ul, Concentration: 240 ug/ml by Nanodrop and 180 ug/ml by Bradford method using BSA as the standard;

### Source:

Rabbit

### Isotype:

IgG

### Immunogen Catalog Number:

AG5136

### GenBank Accession Number:

BC047588

### GeneID (NCBI):

57552

### UNIPROT ID:

Q6PIU2

### Full Name:

arylacetamide deacetylase-like 1

### Calculated MW:

46 kDa

### Observed MW:

40-50 kDa

### Purification Method:

Antigen affinity purification

### Recommended Dilutions:

WB 1:1000-1:4000

IP 0.5-4.0 ug for 1.0-3.0 mg of total protein lysate

IHC 1:20-1:200

IF/ICC 1:10-1:100

## Applications

### Tested Applications:

WB, IHC, IF/ICC, IP, ELISA

### Cited Applications:

WB, IHC, IF, IP

### Species Specificity:

human, mouse, rat

### Cited Species:

human, mouse, rat

### Positive Controls:

WB : PC-3 cells,

IP : COLO 320 cells,

IHC : human brain tissue, human kidney tissue, human lung tissue, human ovary tissue, human skin tissue, human spleen tissue

IF/ICC : COLO 320 cells,

**Note-IHC: suggested antigen retrieval with TE buffer pH 9.0; (\*) Alternatively, antigen retrieval may be performed with citrate buffer pH 6.0**

## Background Information

AADACL1(Arylacetamide deacetylase-like 1) is also named as NCEH1, KIAA1363 and belongs to the 'GDXG' lipolytic enzyme family. The transmembrane enzyme, AADACL1, controls the production of the monoalkylglycerol ether (MAGE) class of NELS in cancer cells and acts as a 2-acetyl MAGE hydrolase and is likely the principal source for this activity in tumor cells(PMID:21513884). The full length protein has three glycosylation sites and can be N-glycosylated(PMID:19159218). It has 3 isoforms produced by alternative splicing.

## Notable Publications

Author	Pubmed ID	Journal	Application
Jingyi Duan	32240813	J Proteomics	WB
Junyi Zhang	39052058	Naunyn Schmiedeberg's Arch Pharmacol	WB
Hai-Jian Sun	38664801	Cardiovasc Diabetol	IP,IF

## Storage

### Storage:

Store at -20°C. Stable for one year after shipment.

### Storage Buffer:

PBS with 0.02% sodium azide and 50% glycerol pH 7.3.

Aliquoting is unnecessary for -20°C storage

\*\*\* 20ul sizes contain 0.1% BSA

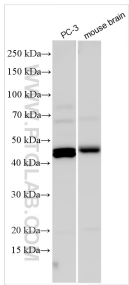
For technical support and original validation data for this product please contact:

T: 1 (888) 4PTGLAB (1-888-478-4522) (toll free in USA), or 1(312) 455-8498 (outside USA)

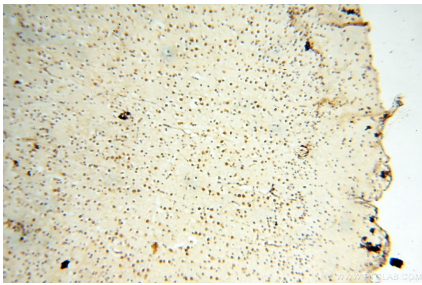
E: [proteintech@ptglab.com](mailto:proteintech@ptglab.com)  
W: [ptglab.com](http://ptglab.com)

This product is exclusively available under Proteintech Group brand and is not available to purchase from any other manufacturer.

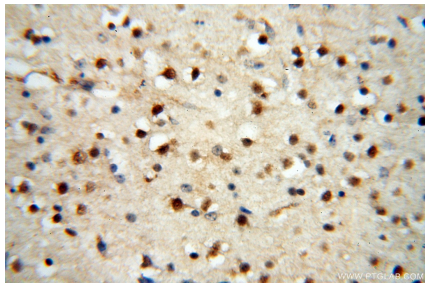
Selected Validation Data



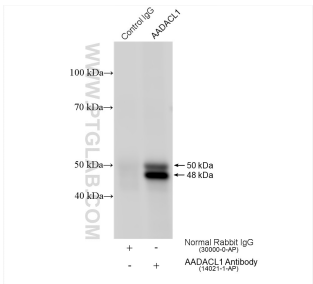
Various lysates were subjected to SDS PAGE followed by western blot with 14021-1-AP (AADACL1 antibody) at dilution of 1:2000 incubated at room temperature for 1.5 hours.



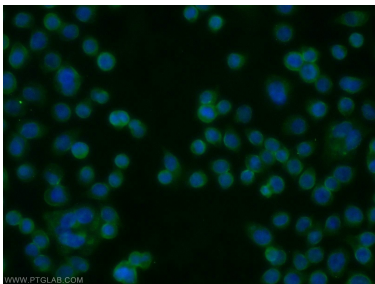
Immunohistochemical analysis of paraffin-embedded human brain using 14021-1-AP (AADACL1 antibody) at dilution of 1:50 (under 10x lens).



Immunohistochemical analysis of paraffin-embedded human brain using 14021-1-AP (AADACL1 antibody) at dilution of 1:50 (under 40x lens).



IP result of anti-AADACL1 (IP:14021-1-AP, 4ug; Detection:14021-1-AP 1:500) with COLO 320 cells lysate 1320 ug.



Immunofluorescent analysis of COLO 320 cells using 14021-1-AP (AADACL1 antibody) at dilution of 1:25 and Alexa Fluor 488-conjugated Goat Anti-Rabbit IgG(H+L).