

For Research Use Only

# ROD1 Polyclonal antibody

Catalog Number: 14027-1-AP

Featured Product

7 Publications



## Basic Information

### Catalog Number:

14027-1-AP

### Size:

150ul, Concentration: 700 ug/ml by Nanodrop;

### Source:

Rabbit

### Isotype:

IgG

### Immunogen Catalog Number:

AG5172

### GenBank Accession Number:

BC044585

### GeneID (NCBI):

9991

### UNIPROT ID:

O95758

### Full Name:

ROD1 regulator of differentiation 1 (S. pombe)

### Calculated MW:

60 kDa

### Observed MW:

55-59 kDa

### Purification Method:

Antigen affinity purification

### Recommended Dilutions:

WB: 1:2000-1:12000

IHC: 1:20-1:200

## Applications

### Tested Applications:

WB, IHC, ELISA

### Cited Applications:

WB, IHC, IF, ColP

### Species Specificity:

human, mouse, rat

### Cited Species:

human, mouse

**Note-IHC: suggested antigen retrieval with TE buffer pH 9.0; (\*) Alternatively, antigen retrieval may be performed with citrate buffer pH 6.0**

### Positive Controls:

WB : HL-60 cells, mouse thymus tissue, HeLa cells, Jurkat cells, rat thymus tissue

IHC : human lymphoma tissue,

## Background Information

ROD1 is a RNA-binding protein that mediates pre-mRNA alternative splicing regulation, it plays a role in the regulation of cell proliferation, differentiation and migration. ROD1 exist some isoforms and also can be modified with the molecular weight range from 55-59 kDa.

## Notable Publications

Author	Pubmed ID	Journal	Application
Qiong Wu	32477006	Cancer Cell Int	WB,IHC
Ya Zhou	30013660	Oncol Lett	WB
Yingji Chen	35016691	Cancer Cell Int	WB

## Storage

### Storage:

Store at -20°C. Stable for one year after shipment.

### Storage Buffer:

PBS with 0.02% sodium azide and 50% glycerol, pH7.3

Aliquoting is unnecessary for -20°C storage

\*\*\* 20ul sizes contain 0.1% BSA

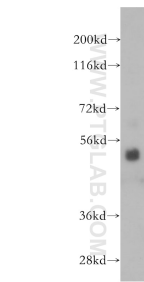
For technical support and original validation data for this product please contact:

T: 1 (888) 4PTGLAB (1-888-478-4522) (toll free in USA), or 1(312) 455-8498 (outside USA)

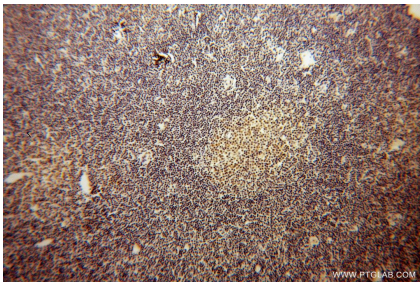
E: [proteintech@ptglab.com](mailto:proteintech@ptglab.com)  
W: [ptglab.com](http://ptglab.com)

This product is exclusively available under Proteintech Group brand and is not available to purchase from any other manufacturer.

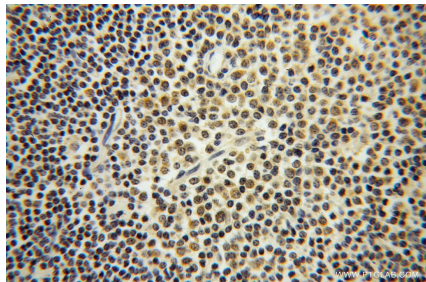
Selected Validation Data



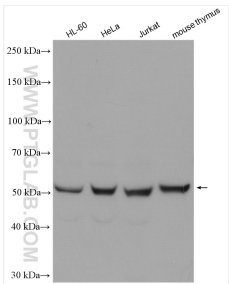
HL-60 cells were subjected to SDS PAGE followed by western blot with 14027-1-AP (ROD1 antibody) at dilution of 1:500 incubated at room temperature for 1.5 hours.



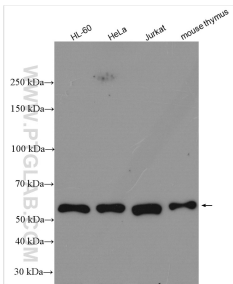
Immunohistochemical analysis of paraffin-embedded human lymphoma using 14027-1-AP (ROD1 antibody) at dilution of 1:100 (under 10x lens).



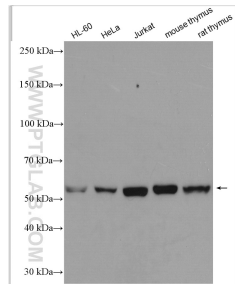
Immunohistochemical analysis of paraffin-embedded human lymphoma using 14027-1-AP (ROD1 antibody) at dilution of 1:100 (under 40x lens).



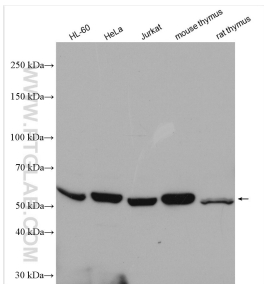
Various lysates were subjected to SDS PAGE followed by western blot with 14027-1-AP (ROD1 antibody) at dilution of 1:6000 incubated at room temperature for 1.5 hours.



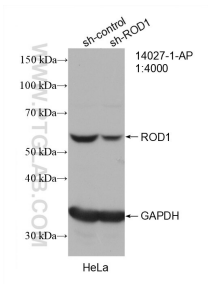
Various lysates subjected to SDS PAGE followed by western blot with 14027-1-AP (ROD1 antibody) at dilution of 1:6000 incubated at room temperature for 1.5 hours.



Various lysates were subjected to SDS PAGE followed by western blot with 14027-1-AP (ROD1 antibody) at dilution of 1:6000 incubated at room temperature for 1.5 hours.



Various lysates were subjected to SDS PAGE followed by western blot with 14027-1-AP (ROD1 antibody) at dilution of 1:6000 incubated at room temperature for 1.5 hours.



WB result of ROD1 antibody (14027-1-AP; 1:4000; incubated at room temperature for 1.5 hours) with sh-Control and sh-ROD1 transfected HeLa cells.