

For Research Use Only

FEM1C Polyclonal antibody

Catalog Number: 14037-1-AP



Basic Information

Catalog Number: 14037-1-AP	GenBank Accession Number: BC028369	Purification Method: Antigen affinity purification
Size: 150ul , Concentration: 400 ug/ml by Nanodrop;	GeneID (NCBI): 56929	Recommended Dilutions: WB 1:500-1:2000
Source: Rabbit	UNIPROT ID: Q96JPO	IHC 1:20-1:200
Isotype: IgG	Full Name: fem-1 homolog c (C. elegans)	IF/ICC 1:50-1:500
Immunogen Catalog Number: AG5099	Calculated MW: 69 kDa	
	Observed MW: 69 kDa	

Applications

Tested Applications: WB, IHC, IF/ICC, ELISA	Positive Controls:
Species Specificity: human, mouse, rat	WB : mouse brain tissue, mouse heart tissue, HepG2 cells, rat brain tissue
Note-IHC: suggested antigen retrieval with TE buffer pH 9.0; (*) Alternatively, antigen retrieval may be performed with citrate buffer pH 6.0	IHC : human heart tissue, mouse brain tissue
	IF/ICC : HeLa cells,

Background Information

Protein fem-1 homolog C (FEM1C) is involved in protein modification and ubiquitination. Probable component of an E3 ubiquitin-protein ligase complex, in which it may act as a substrate recognition subunit. Highly expressed in kidney, cardiac tissue, skeletal muscle and testis. Expressed at lower levels in other tissues, including cartilage. This antibody specifically recognizes the 69kd FEM1C protein.

Storage

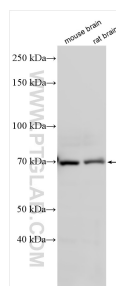
Storage:
Store at -20°C. Stable for one year after shipment.
Storage Buffer:
PBS with 0.02% sodium azide and 50% glycerol pH 7.3.
Aliquoting is unnecessary for -20°C storage

*** 20ul sizes contain 0.1% BSA

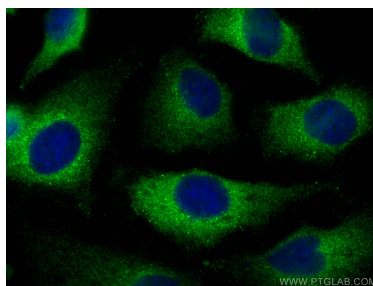
For technical support and original validation data for this product please contact:
T: 1 (888) 4PTGLAB (1-888-478-4522) (toll free in USA), or 1(312) 455-8498 (outside USA)
E: proteintech@ptglab.com
W: ptglab.com

This product is exclusively available under Proteintech Group brand and is not available to purchase from any other manufacturer.

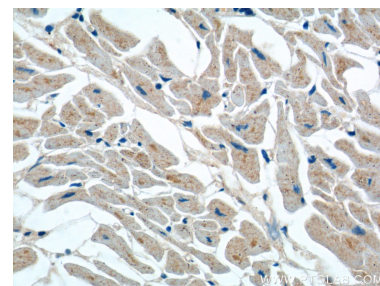
Selected Validation Data



Various lysates were subjected to SDS PAGE followed by western blot with 14037-1-AP (FEM1C antibody) at dilution of 1:1000 incubated at room temperature for 1.5 hours.



Immunofluorescent analysis of (-20°C Methanol) fixed HeLa cells using FEM1C antibody (14037-1-AP) at dilution of 1:200 and CoraLite® 488-Conjugated Goat Anti-Rabbit IgG(H+L).



Immunohistochemical analysis of paraffin-embedded human heart tissue slide using 14037-1-AP (FEM1C Antibody) at dilution of 1:50 (under 40x lens).