

For Research Use Only

# SCRG1 Polyclonal antibody

Catalog Number: 14038-1-AP

Featured Product

2 Publications



## Basic Information

### Catalog Number:

14038-1-AP

### Size:

150ul, Concentration: 400 ug/ml by Nanodrop and 313 ug/ml by Bradford method using BSA as the standard;

### Source:

Rabbit

### Isotype:

IgG

### Immunogen Catalog Number:

AG5104

### GenBank Accession Number:

BC017583

### GeneID (NCBI):

11341

### UNIPROT ID:

O75711

### Full Name:

scrapie responsive protein 1

### Calculated MW:

11 kDa

### Purification Method:

Antigen affinity purification

### Recommended Dilutions:

IHC 1:20-1:200

## Applications

### Tested Applications:

IHC, ELISA

### Cited Applications:

IHC

### Species Specificity:

human, mouse, rat

### Cited Species:

human, mouse

**Note-IHC: suggested antigen retrieval with TE buffer pH 9.0; (\*) Alternatively, antigen retrieval may be performed with citrate buffer pH 6.0**

### Positive Controls:

IHC : mouse brain tissue, human testis tissue

## Notable Publications

Author	Pubmed ID	Journal	Application
Yuchuan Zhou	35126528	Stem Cells Int	IHC
Eunbeol Lee	37118130	Nat Aging	IHC

## Storage

### Storage:

Store at -20°C. Stable for one year after shipment.

### Storage Buffer:

PBS with 0.02% sodium azide and 50% glycerol pH 7.3.

Aliquoting is unnecessary for -20°C storage

\*\*\* 20ul sizes contain 0.1% BSA

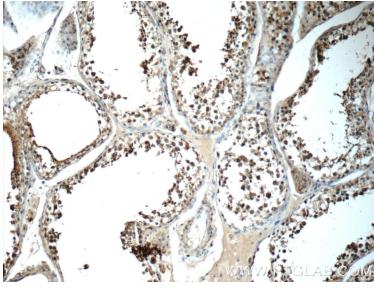
For technical support and original validation data for this product please contact:

T: 1 (888) 4PTGLAB (1-888-478-4522) (toll free in USA), or 1(312) 455-8498 (outside USA)

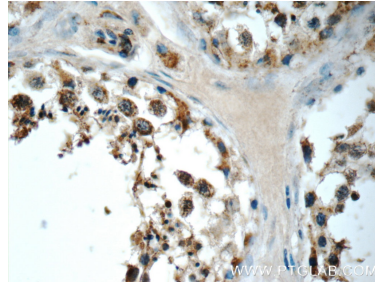
E: [proteintech@ptglab.com](mailto:proteintech@ptglab.com)  
W: [ptglab.com](http://ptglab.com)

This product is exclusively available under Proteintech Group brand and is not available to purchase from any other manufacturer.

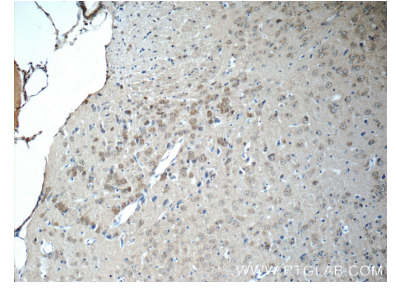
## Selected Validation Data



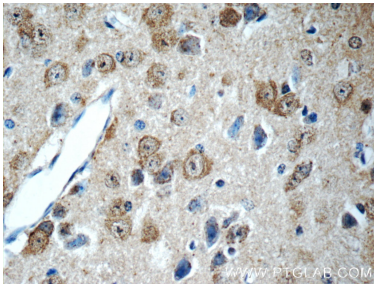
Immunohistochemical analysis of paraffin-embedded human testis tissue slide using 14038-1-AP (SCRG1 Antibody) at dilution of 1:50 (under 10x lens).



Immunohistochemical analysis of paraffin-embedded human testis tissue slide using 14038-1-AP (SCRG1 Antibody) at dilution of 1:50 (under 40x lens).



Immunohistochemical analysis of paraffin-embedded mouse brain tissue slide using 14038-1-AP (SCRG1 Antibody) at dilution of 1:50 (under 10x lens).



Immunohistochemical analysis of paraffin-embedded mouse brain tissue slide using 14038-1-AP (SCRG1 Antibody) at dilution of 1:50 (under 40x lens).