

For Research Use Only

MAN1A2 Polyclonal antibody

Catalog Number: 14049-1-AP

1 Publications



Basic Information

Catalog Number:

14049-1-AP

Size:

150ul, Concentration: 240 ug/ml by Nanodrop and 173 ug/ml by Bradford method using BSA as the standard;

Source:

Rabbit

Isotype:

IgG

Immunogen Catalog Number:

AG5240

GenBank Accession Number:

BC063300

GeneID (NCBI):

10905

UNIPROT ID:

O60476

Full Name:

mannosidase, alpha, class 1A, member 2

Calculated MW:

641 aa, 73 kDa

Observed MW:

73 kDa

Purification Method:

Antigen affinity purification

Recommended Dilutions:

WB 1:200-1:1000

IP 0.5-4.0 ug for 1.0-3.0 mg of total protein lysate

IHC 1:20-1:200

Applications

Tested Applications:

WB, IP, IHC, ELISA

Cited Applications:

WB

Species Specificity:

human

Cited Species:

human

Positive Controls:

WB : human placenta tissue,

IP : human placenta tissue,

IHC : human placenta tissue, human heart tissue, human lung tissue, human ovary tissue

Note-IHC: suggested antigen retrieval with TE buffer pH 9.0; (*) Alternatively, antigen retrieval may be performed with citrate buffer pH 6.0

Background Information

The first group or Class I mannosidase is comprised of α 1-2 mannosidases from mammals and yeast with encoded polypeptides of 65-75 kDa. Most of them are Ca^{2+} -dependent enzymes located in the ER and/or Golgi which are inhibited by substrate mimics like kifunensine and deoxymannojirimycin. Their specificity is restricted to α (1-2) linkages, and they are mostly inactive towards artificial substrates like arylmannosides (PMID:10207175).

Notable Publications

Author	Pubmed ID	Journal	Application
Song Hu	27920474	World J Gastroenterol	WB

Storage

Storage:

Store at -20°C . Stable for one year after shipment.

Storage Buffer:

PBS with 0.02% sodium azide and 50% glycerol pH 7.3.

Aliquoting is unnecessary for -20°C storage

*** 20ul sizes contain 0.1% BSA

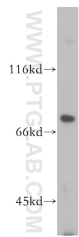
For technical support and original validation data for this product please contact:

T: 1 (888) 4PTGLAB (1-888-478-4522) (toll free in USA), or 1(312) 455-8498 (outside USA)

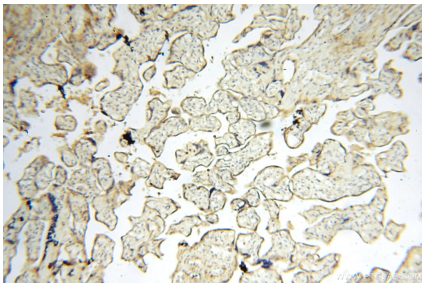
E: proteintech@ptglab.com
W: ptglab.com

This product is exclusively available under Proteintech Group brand and is not available to purchase from any other manufacturer.

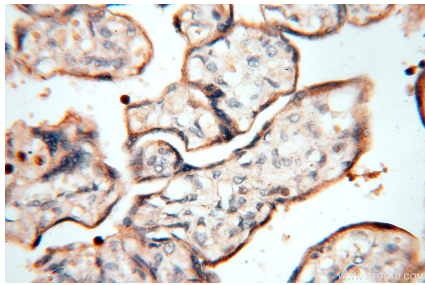
Selected Validation Data



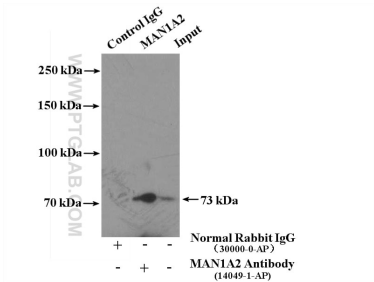
human placenta tissue were subjected to SDS PAGE followed by western blot with 14049-1-AP (MAN1A2 antibody) at dilution of 1:200 incubated at room temperature for 1.5 hours.



Immunohistochemical analysis of paraffin-embedded human placenta using 14049-1-AP (MAN1A2 antibody) at dilution of 1:50 (under 10x lens).



Immunohistochemical analysis of paraffin-embedded human placenta using 14049-1-AP (MAN1A2 antibody) at dilution of 1:50 (under 40x lens).



IP result of anti-MAN1A2 (IP:14049-1-AP, 4ug; Detection:14049-1-AP 1:200) with human placenta tissue lysate 4000ug.