

For Research Use Only

SRPK1 Polyclonal antibody

Catalog Number: 14073-1-AP

7 Publications



Basic Information

Catalog Number:

14073-1-AP

Size:

150ul, Concentration: 500 ug/ml by Nanodrop and 267 ug/ml by Bradford method using BSA as the standard;

Source:

Rabbit

Isotype:

IgG

Immunogen Catalog Number:

AG5149

GenBank Accession Number:

BC038292

GeneID (NCBI):

6732

UNIPROT ID:

Q96SB4

Full Name:

SFRS protein kinase 1

Calculated MW:

92.4 kDa

Observed MW:

72-95 kDa

Purification Method:

Antigen affinity purification

Recommended Dilutions:

WB 1:1000-1:4000

IP 0.5-4.0 ug for 1.0-3.0 mg of total protein lysate

IHC 1:20-1:200

IF/ICC 1:10-1:100

Applications

Tested Applications:

WB, IHC, IF/ICC, IP, ELISA

Cited Applications:

WB, IF, CoIP

Species Specificity:

human, mouse

Cited Species:

human, mouse, chicken

Note-IHC: suggested antigen retrieval with TE buffer pH 9.0; (*) Alternatively, antigen retrieval may be performed with citrate buffer pH 6.0

Positive Controls:

WB: HeLa cells, Jurkat cells, L02 cells, mouse testis tissue

IP: mouse testis tissue,

IHC: human breast cancer tissue, human testis tissue

IF/ICC: SH-SY5Y cells,

Background Information

SRPK1 (serine-arginine protein kinase 1) is a protein kinase that specifically phosphorylates proteins containing serine-arginine-rich domains. Its substrates include a family of SR proteins that are key regulators of mRNA AS (alternative splicing). SRPK1 may be localized both in the cytoplasm and nucleus and translocates between these compartments under various conditions (e.g. cell cycle and stress). It is able to phosphorylate SR proteins both in cytoplasm and nucleus (the significance of which remains incompletely understood) and thus regulate the activity of these proteins by affecting their ability to bind other proteins and/or RNA as well as their intracellular localization.(PMID:22817743). This protein has 2 isoforms produced by alternative splicing.

Notable Publications

Author	Pubmed ID	Journal	Application
Yufeng Li	34614409	Cell Metab	WB, CoIP
Guanghai Hu	32194790	J Cancer	WB
Li Wang	29503206	Cell Chem Biol	WB

Storage

Storage:

Store at -20°C. Stable for one year after shipment.

Storage Buffer:

PBS with 0.02% sodium azide and 50% glycerol pH 7.3.

Aliquoting is unnecessary for -20°C storage

*** 20ul sizes contain 0.1% BSA

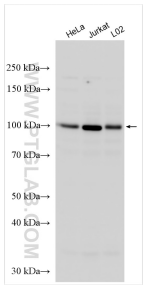
For technical support and original validation data for this product please contact:

T: 1 (888) 4PTGLAB (1-888-478-4522) (toll free in USA), or 1(312) 455-8498 (outside USA)

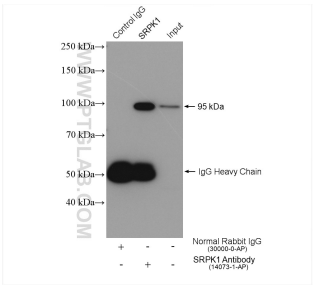
E: proteintech@ptglab.com
W: ptglab.com

This product is exclusively available under Proteintech Group brand and is not available to purchase from any other manufacturer.

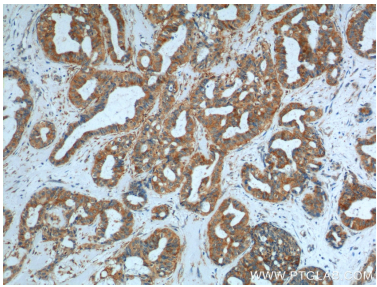
Selected Validation Data



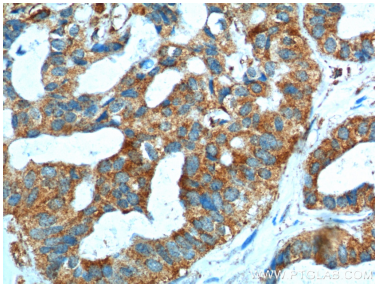
Various lysates were subjected to SDS PAGE followed by western blot with 14073-1-AP (SRPK1 antibody) at dilution of 1:2000 incubated at room temperature for 1.5 hours.



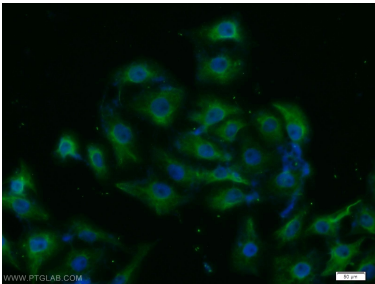
IP result of anti-SRPK1 (IP:14073-1-AP, 4ug; Detection:14073-1-AP 1:500) with mouse testis tissue lysate 2040 ug.



Immunohistochemical analysis of paraffin-embedded human breast cancer tissue slide using 14073-1-AP (SRPK1 Antibody) at dilution of 1:200 (under 10x lens).



Immunohistochemical analysis of paraffin-embedded human breast cancer tissue slide using 14073-1-AP (SRPK1 Antibody) at dilution of 1:200 (under 40x lens).



Immunofluorescent analysis of SH-SY5Y cells using 14073-1-AP (SRPK1 antibody) at dilution of 1:25 and Alexa Fluor 488-conjugated Goat Anti-Rabbit IgG(H+L).