

For Research Use Only

# PDGF-D Polyclonal antibody

Catalog Number: 14075-1-AP

Featured Product

15 Publications



## Basic Information

### Catalog Number:

14075-1-AP

### Size:

150ul, Concentration: 500 ug/ml by Nanodrop and 300 ug/ml by Bradford method using BSA as the standard;

### Source:

Rabbit

### Isotype:

IgG

### Immunogen Catalog Number:

AG5154

### GenBank Accession Number:

BC030645

### GeneID (NCBI):

80310

### UNIPROT ID:

Q9GZPO

### Full Name:

platelet derived growth factor D

### Calculated MW:

43 kDa

### Purification Method:

Antigen affinity purification

### Recommended Dilutions:

IHC 1:20-1:200

IF-P 1:50-1:500

IF/ICC 1:50-1:500

## Applications

### Tested Applications:

IHC, IF/ICC, IF-P, ELISA

### Cited Applications:

WB, IHC, IF

### Species Specificity:

human, rat

### Cited Species:

human, mouse, rat, goat

**Note-IHC: suggested antigen retrieval with TE buffer pH 9.0; (\*) Alternatively, antigen retrieval may be performed with citrate buffer pH 6.0**

### Positive Controls:

IHC : human prostate cancer tissue,

IF-P : rat brain tissue,

IF/ICC : A549 cells,

## Notable Publications

| Author        | Pubmed ID | Journal                | Application |
|---------------|-----------|------------------------|-------------|
| I R Brito     | 25498237  | Domest Anim Endocrinol | IHC         |
| Liu-Lin Xiong | 31082354  | Brain Res              | IF          |
| Qin Zheng     | 29734187  | Cell Physiol Biochem   | WB          |

## Storage

### Storage:

Store at -20°C. Stable for one year after shipment.

### Storage Buffer:

PBS with 0.02% sodium azide and 50% glycerol pH 7.3.

Aliquoting is unnecessary for -20°C storage

\*\*\* 20ul sizes contain 0.1% BSA

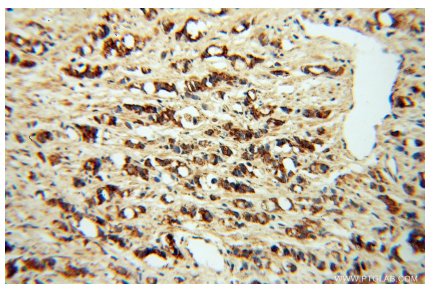
For technical support and original validation data for this product please contact:

T: 1 (888) 4PTGLAB (1-888-478-4522) (toll free in USA), or 1(312) 455-8498 (outside USA)

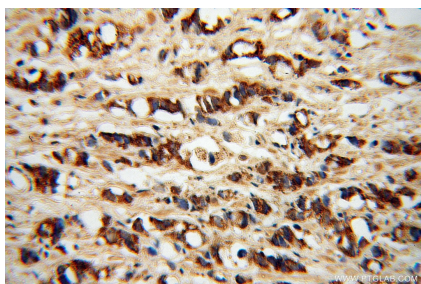
E: [proteintech@ptglab.com](mailto:proteintech@ptglab.com)  
W: [ptglab.com](http://ptglab.com)

This product is exclusively available under Proteintech Group brand and is not available to purchase from any other manufacturer.

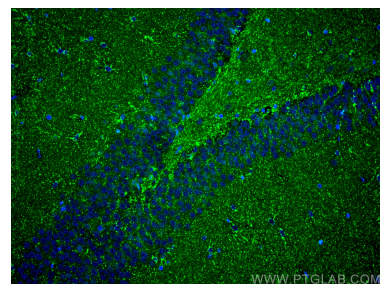
## Selected Validation Data



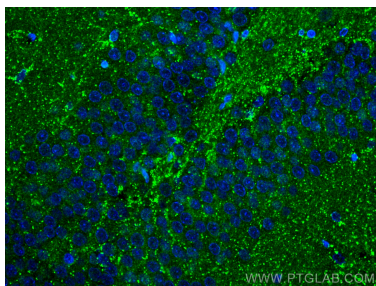
Immunohistochemical analysis of paraffin-embedded human prostate cancer using 14075-1-AP (PDGFD antibody) at dilution of 1:50 (under 10x lens).



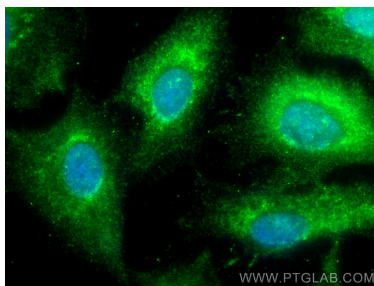
Immunohistochemical analysis of paraffin-embedded human prostate cancer using 14075-1-AP (PDGFD antibody) at dilution of 1:50 (under 40x lens).



Immunofluorescent analysis of (4% PFA) fixed rat brain tissue using PDGFD antibody (14075-1-AP) at dilution of 1:200 and CoraLite®488-Conjugated AffiniPure Goat Anti-Rabbit IgG(H+L).



Immunofluorescent analysis of (4% PFA) fixed rat brain tissue using PDGFD antibody (14075-1-AP) at dilution of 1:200 and CoraLite®488-Conjugated AffiniPure Goat Anti-Rabbit IgG(H+L).



Immunofluorescent analysis of (4% PFA) fixed A549 cells using PDGFD antibody (14075-1-AP) at dilution of 1:200 and CoraLite®488-Conjugated AffiniPure Goat Anti-Rabbit IgG(H+L) (SA00013-2).