

For Research Use Only

ARHGEF7 Polyclonal antibody

Catalog Number: 14092-1-AP

3 Publications



Basic Information

Catalog Number:

14092-1-AP

Size:

150ul, Concentration: 400 ug/ml by Nanodrop and 267 ug/ml by Bradford method using BSA as the standard;

Source:

Rabbit

Isotype:

IgG

Immunogen Catalog Number:

AG5223

GenBank Accession Number:

BC060776

GeneID (NCBI):

8874

UNIPROT ID:

Q14155

Full Name:

Rho guanine nucleotide exchange factor (GEF) 7

Calculated MW:

803 aa, 90 kDa

Observed MW:

70 kDa

Purification Method:

Antigen affinity purification

Recommended Dilutions:

WB 1:1000-1:4000

IP 0.5-4.0 ug for 1.0-3.0 mg of total protein lysate

IHC 1:250-1:1000

IF/ICC 1:50-1:500

Applications

Tested Applications:

WB, IHC, IF/ICC, IP, ELISA

Cited Applications:

WB, IHC

Species Specificity:

human, mouse, rat

Cited Species:

human, rat

Note-IHC: suggested antigen retrieval with TE buffer pH 9.0; (*) Alternatively, antigen retrieval may be performed with citrate buffer pH 6.0

Positive Controls:

WB: PC-12 cells, mouse skeletal muscle tissue, K-562 cells, Jurkat cells, HeLa cells, NIH/3T3 cells, Transfected HEK-293 cells

IP: HeLa cells,

IHC: mouse brain tissue, human rectal cancer tissue, rat brain tissue

IF/ICC: HeLa cells,

Notable Publications

Author	Pubmed ID	Journal	Application
Tao Ma	35273739	Am J Transl Res	WB, IHC
Ruth Chia	25500533	Nat Commun	WB
Jiaman Xie	39581552	J Control Release	WB

Storage

Storage:

Store at -20°C. Stable for one year after shipment.

Storage Buffer:

PBS with 0.02% sodium azide and 50% glycerol pH 7.3.

Aliquoting is unnecessary for -20°C storage

*** 20ul sizes contain 0.1% BSA

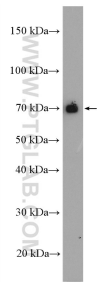
For technical support and original validation data for this product please contact:

T: 1 (888) 4PTGLAB (1-888-478-4522) (toll free in USA), or 1(312) 455-8498 (outside USA)

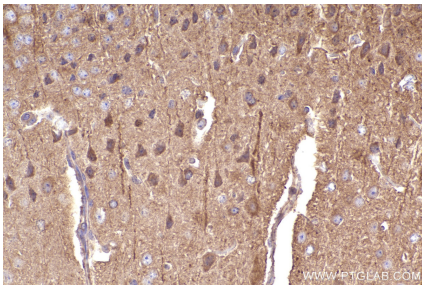
E: proteintech@ptglab.com
W: ptglab.com

This product is exclusively available under Proteintech Group brand and is not available to purchase from any other manufacturer.

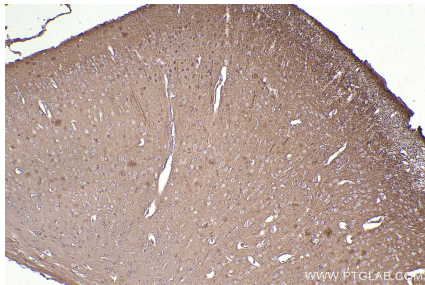
Selected Validation Data



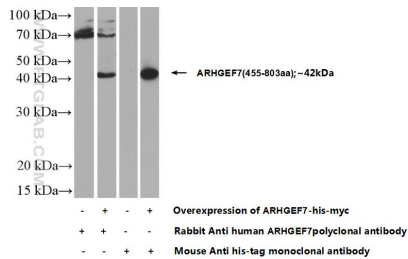
PC-12 cells were subjected to SDS PAGE followed by western blot with 14092-1-AP (ARHGEF7 antibody) at dilution of 1:2000 incubated at room temperature for 1.5 hours.



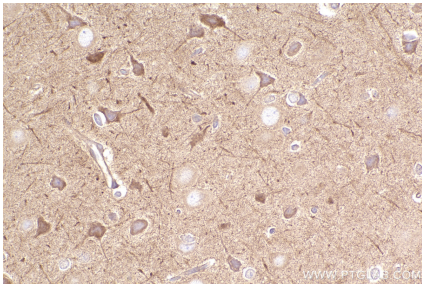
Immunohistochemical analysis of paraffin-embedded mouse brain tissue slide using 14092-1-AP (ARHGEF7 antibody) at dilution of 1:500 (under 40x lens). Heat mediated antigen retrieval with Tris-EDTA buffer (pH 9.0).



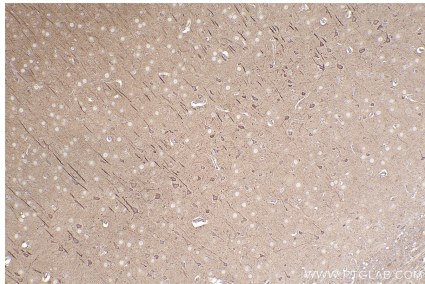
Immunohistochemical analysis of paraffin-embedded mouse brain tissue slide using 14092-1-AP (ARHGEF7 antibody) at dilution of 1:500 (under 10x lens). Heat mediated antigen retrieval with Tris-EDTA buffer (pH 9.0).



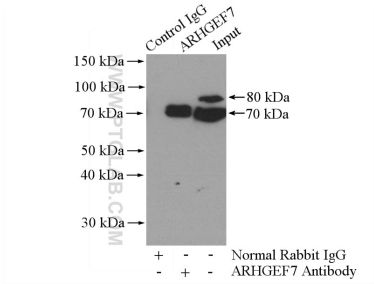
WB result of ARHGEF7 antibody (14092-1-AP; 1:1000; room temperature for 1.5 hours) with negative control and ARHGEF7 overexpressed Transfected HEK-293 cells.



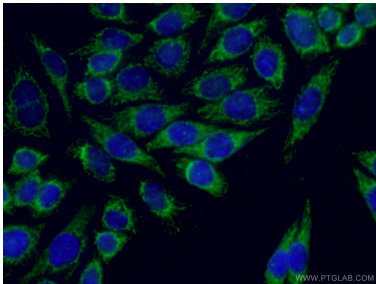
Immunohistochemical analysis of paraffin-embedded rat brain tissue slide using 14092-1-AP (ARHGEF7 antibody) at dilution of 1:500 (under 40x lens). Heat mediated antigen retrieval with Tris-EDTA buffer (pH 9.0).



Immunohistochemical analysis of paraffin-embedded rat brain tissue slide using 14092-1-AP (ARHGEF7 antibody) at dilution of 1:500 (under 10x lens). Heat mediated antigen retrieval with Tris-EDTA buffer (pH 9.0).



IP result of anti-ARHGEF7 (IP:14092-1-AP, 4ug; Detection:14092-1-AP 1:1000) with HeLa cells lysate 1200ug.



Immunofluorescent analysis of (-20°C Ethanol) fixed HeLa cells using 14092-1-AP (ARHGEF7 antibody) at dilution of 1:50 and Alexa Fluor 488-Conjugated AffiniPure Goat Anti-Rabbit IgG(H+L).