

For Research Use Only

FLAD1 Polyclonal antibody

Catalog Number: 14118-1-AP

Featured Product

2 Publications



Basic Information

Catalog Number:

14118-1-AP

Size:

150ul, Concentration: 400 ug/ml by Nanodrop and 213 ug/ml by Bradford method using BSA as the standard;

Source:

Rabbit

Isotype:

IgG

Immunogen Catalog Number:

AG5267

GenBank Accession Number:

BC011378

GeneID (NCBI):

80308

UNIPROT ID:

Q8NFF5

Full Name:

FAD1 flavin adenine dinucleotide synthetase homolog (S. cerevisiae)

Calculated MW:

446 aa, 49 kDa

Observed MW:

50 kDa, 65-70 kDa

Purification Method:

Antigen affinity purification

Recommended Dilutions:

WB 1:500-1:1000

IF/ICC 1:200-1:800

Applications

Tested Applications:

WB, IF/ICC, ELISA

Cited Applications:

WB, ColP

Species Specificity:

human, mouse, rat

Cited Species:

human, mouse

Positive Controls:

WB : K-562 cells, HEK-293 cells, HepG2 cells, rat liver tissue, L02 cells, mouse liver tissue

IF/ICC : HepG2 cells,

Background Information

FLAD1 is a protein-coding gene for flavin adenine dinucleotide synthetase (FADS), a key enzyme in the FAD biosynthesis process which contains an N-terminal molybdopterin-binding (MPTb) domain and a C-terminal domain (FADS domain) (PMID: 32714079). Alternative splicing of the human FLAD1 gene generates different isoforms of the enzyme FAD synthase. ~60 and ~50 kDa bands correspond to the expected mitochondrial FADS1 and cytosolic FADS2 proteins, respectively (PMID: 29316637).

Notable Publications

Author	Pubmed ID	Journal	Application
Hongwei Chu	34932315	Anal Chem	WB, ColP
Xiao-Lu Li	39879685	Ecotoxicol Environ Saf	WB

Storage

Storage:

Store at -20°C. Stable for one year after shipment.

Storage Buffer:

PBS with 0.02% sodium azide and 50% glycerol, pH7.3

Aliquoting is unnecessary for -20°C storage

*** 20ul sizes contain 0.1% BSA

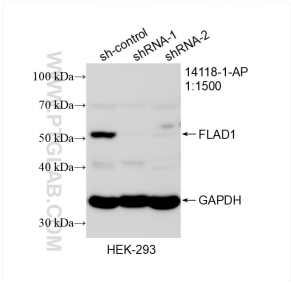
For technical support and original validation data for this product please contact:

T: 1 (888) 4PTGLAB (1-888-478-4522) (toll free in USA), or 1(312) 455-8498 (outside USA)

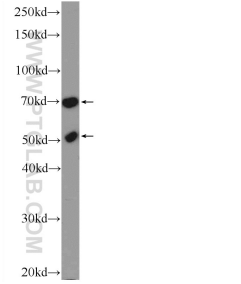
E: proteintech@ptglab.com
W: ptglab.com

This product is exclusively available under Proteintech Group brand and is not available to purchase from any other manufacturer.

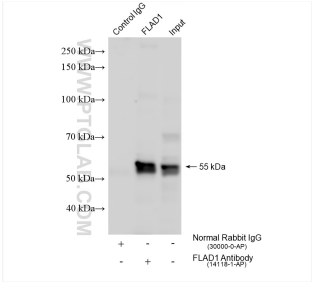
Selected Validation Data



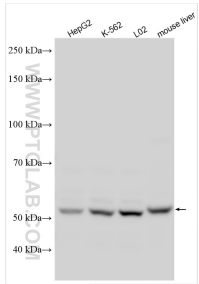
WB result of FLAD1 antibody (14118-1-AP; 1:1500; incubated at room temperature for 1.5 hours) with sh-Control and sh-FLAD1 transfected HEK-293 cells.



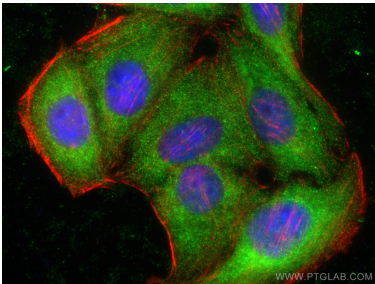
K-562 cells were subjected to SDS PAGE followed by western blot with 14118-1-AP (FLAD1 antibody at dilution of 1:600 incubated at room temperature for 1.5 hours).



IP result of anti-FLAD1 (IP:14118-1-AP, 4ug; Detection:14118-1-AP 1:1000) with K-562 cells lysate 2400 ug.



Various lysates were subjected to SDS PAGE followed by western blot with 14118-1-AP (FLAD1 antibody) at dilution of 1:1500 incubated at room temperature for 1.5 hours.



Immunofluorescent analysis of (-20°C Ethanol) fixed HepG2 cells using FLAD1 antibody (14118-1-AP) at dilution of 1:400 and CoraLite® 488-Conjugated AffiniPure Goat Anti-Rabbit IgG(H+L) (SA00013-2), CL594-Phalloidin (red).