

For Research Use Only

CDC26 Polyclonal antibody

Catalog Number: 14125-1-AP **1 Publications**



Basic Information

Catalog Number: 14125-1-AP	GenBank Accession Number: BC066300	Purification Method: Antigen affinity purification
Size: 150ul , Concentration: 2000 µg/ml by Nanodrop and 580 µg/ml by Bradford method using BSA as the standard;	GeneID (NCBI): 246184	Recommended Dilutions: WB 1:500-1:2000 IHC 1:20-1:200
Source: Rabbit	Full Name: cell division cycle 26 homolog (S. cerevisiae)	
Isotype: IgG	Calculated MW: 10 kDa	
Immunogen Catalog Number: AG5276	Observed MW: 10 kDa	

Applications

Tested Applications: IHC, WB, ELISA	Positive Controls: WB : HeLa cells,
Cited Applications: IF	IHC : mouse brain tissue,
Species Specificity: human, mouse, rat	
Cited Species: human	

Note-IHC: suggested antigen retrieval with TE buffer pH 9.0; (*) Alternatively, antigen retrieval may be performed with citrate buffer pH 6.0

Background Information

CDC26, also named as ANAPC12, APC12 and C9orf17, is a component of the anaphase promoting complex/cyclosome (APC/C). CDC26 can be detected as 14 kDa and ~18 kDa (PMID: 15060174 / PMID: 10222126).

Notable Publications

Author	Pubmed ID	Journal	Application
Kyungsoo Ha	28604711	Nat Commun	IF

Storage

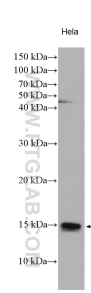
Storage:
Store at -20°C. Stable for one year after shipment.
Storage Buffer:
PBS with 0.02% sodium azide and 50% glycerol pH 7.3.
Aliquoting is unnecessary for -20°C storage

*** 20ul sizes contain 0.1% BSA

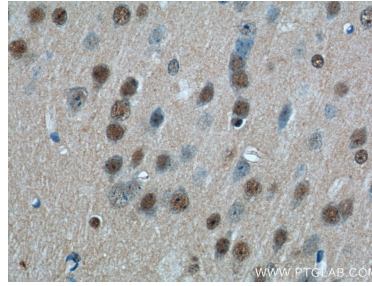
For technical support and original validation data for this product please contact:
T: 1 (888) 4PTGLAB (1-888-478-4522) (toll free in USA), or 1(312) 455-8498 (outside USA)
E: proteintech@ptglab.com
W: ptglab.com

This product is exclusively available under Proteintech Group brand and is not available to purchase from any other manufacturer.

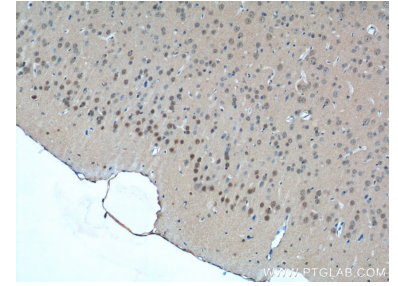
Selected Validation Data



Various lysates were subjected to SDS PAGE followed by western blot with 14125-1-AP (CDC26 antibody) at dilution of 1:1000 incubated at room temperature for 1.5 hours.



Immunohistochemical analysis of paraffin-embedded mouse brain tissue slide using 14125-1-AP (CDC26 Antibody) at dilution of 1:50 (under 40x lens).



Immunohistochemical analysis of paraffin-embedded mouse brain tissue slide using 14125-1-AP (CDC26 Antibody) at dilution of 1:50 (under 10x lens).