

For Research Use Only

Kir2.2 Polyclonal antibody

Catalog Number: 14135-1-AP



Basic Information

Catalog Number: 14135-1-AP	GenBank Accession Number: BC027982	Purification Method: Antigen affinity purification
Size: 150ul , Concentration: 650 µg/ml by Nanodrop and 333 µg/ml by Bradford method using BSA as the standard;	GeneID (NCBI): 3768	Recommended Dilutions: WB 1:500-1:2400
Source: Rabbit	Full Name: potassium inwardly-rectifying channel, subfamily J, member 12	
Isotype: IgG	Calculated MW: 433 aa, 49 kDa	
Immunogen Catalog Number: AG5349	Observed MW: 45-50 kDa	

Applications

Tested Applications: FC, WB, ELISA	Positive Controls: WB : mouse lung tissue, rat lung tissue
Species Specificity: human, mouse, rat	

Background Information

Storage

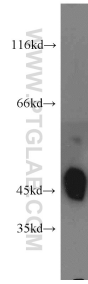
Storage:
Store at -20°C. Stable for one year after shipment.
Storage Buffer:
PBS with 0.02% sodium azide and 50% glycerol pH 7.3.
Aliquoting is unnecessary for -20°C storage

*** 20ul sizes contain 0.1% BSA

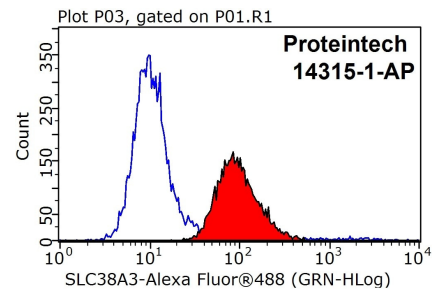
For technical support and original validation data for this product please contact:
T: 1 (888) 4PTGLAB (1-888-478-4522) (toll free in USA), or 1(312) 455-8498 (outside USA)
E: proteintech@ptglab.com
W: ptglab.com

This product is exclusively available under Proteintech Group brand and is not available to purchase from any other manufacturer.

Selected Validation Data



mouse lung tissue were subjected to SDS PAGE followed by western blot with 14135-1-AP (Kir2.2 antibody) at dilution of 1:1500 incubated at room temperature for 1.5 hours.



1×10^6 HEK-293 cells were stained with 0.2ug Kir2.2 antibody (14135-1-AP, red) and control antibody (blue). Fixed with 90% MeOH blocked with 3% BSA (30 min). Alexa Fluor 488-conjugated AffiniPure Goat Anti-Rabbit IgG(H+L) with dilution 1:1000.