

For Research Use Only

TMED4 Polyclonal antibody

Catalog Number: 14141-1-AP

Featured Product

2 Publications



Basic Information

Catalog Number:

14141-1-AP

Size:

150ul , Concentration: 150 µg/ml by Nanodrop;

Source:

Rabbit

Isotype:

IgG

Immunogen Catalog Number:

AG5234

GenBank Accession Number:

BC057851

GeneID (NCBI):

222068

UNIPROT ID:

Q7Z7H5

Full Name:

transmembrane emp24 protein transport domain containing 4

Calculated MW:

227 aa, 26 kDa

Observed MW:

26 kDa

Purification Method:

Antigen affinity purification

Recommended Dilutions:

WB 1:500-1:2000

IP 0.5-4.0 ug for 1.0-3.0 mg of total protein lysate

IF 1:10-1:100

Applications

Tested Applications:

IF, IP, WB, ELISA

Cited Applications:

WB

Species Specificity:

human, mouse, rat

Cited Species:

human

Positive Controls:

WB : mouse liver tissue, HepG2 cells

IP : mouse liver tissue,

IF : HepG2 cells,

Notable Publications

Author	Pubmed ID	Journal	Application
Shulin Li	34561617	Cell Res	WB
Zheng Fang	36618780	Ann Transl Med	WB

Storage

Storage:

Store at -20°C. Stable for one year after shipment.

Storage Buffer:

PBS with 0.02% sodium azide and 50% glycerol pH 7.3.

Aliquoting is unnecessary for -20°C storage

*** 20ul sizes contain 0.1% BSA

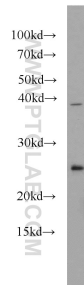
For technical support and original validation data for this product please contact:

T: 1 (888) 4PTGLAB (1-888-478-4522) (toll free in USA), or 1(312) 455-8498 (outside USA)

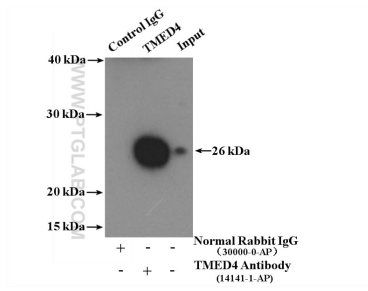
E: proteintech@ptglab.com
W: ptglab.com

This product is exclusively available under Proteintech Group brand and is not available to purchase from any other manufacturer.

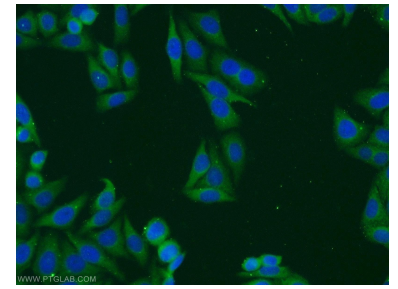
Selected Validation Data



mouse liver tissue were subjected to SDS PAGE followed by western blot with 14141-1-AP (TMED4 antibody) at dilution of 1:1000 incubated at room temperature for 1.5 hours.



IP result of anti-TMED4 (IP:14141-1-AP, 4ug; Detection:14141-1-AP 1:700) with mouse liver tissue lysate 6000 ug.



Immunofluorescent analysis of HepG2 cells using 14141-1-AP (TMED4 antibody) at dilution of 1:25 and Alexa Fluor 488-conjugated AffiniPure Goat Anti-Rabbit IgG(H+L).