

For Research Use Only

Synaptoporin Polyclonal antibody

Catalog Number: 14143-1-AP

2 Publications



Basic Information

Catalog Number:

14143-1-AP

Size:

150ul, Concentration: 350 ug/ml by Nanodrop and 293 ug/ml by Bradford method using BSA as the standard;

Source:

Rabbit

Isotype:

IgG

Immunogen Catalog Number:

AG5307

GenBank Accession Number:

BC022518

GeneID (NCBI):

132204

UNIPROT ID:

Q8TBG9

Full Name:

synaptoporin

Calculated MW:

265 aa, 29 kDa

Observed MW:

37 kDa

Purification Method:

Antigen affinity purification

Recommended Dilutions:

WB 1:1000-1:6000

IP 0.5-4.0 ug for 1.0-3.0 mg of total protein lysate

IHC 1:200-1:800

Applications

Tested Applications:

WB, IP, IHC, ELISA

Cited Applications:

IF

Species Specificity:

human, mouse, rat

Cited Species:

mouse

Note-IHC: suggested antigen retrieval with TE buffer pH 9.0; (*) Alternatively, antigen retrieval may be performed with citrate buffer pH 6.0

Positive Controls:

WB : mouse brain tissue, human brain tissue, mouse cerebellum tissue, rat brain tissue

IP : mouse brain tissue,

IHC : mouse brain tissue, human colon tissue, human gliomas tissue, human brain tissue

Notable Publications

Author	Pubmed ID	Journal	Application
Luisa Speranza	36359212	Biomedicines	IF
Limin Ma	37302990	CNS Neurosci Ther	IF

Storage

Storage:

Store at -20°C. Stable for one year after shipment.

Storage Buffer:

PBS with 0.02% sodium azide and 50% glycerol pH 7.3.

Aliquoting is unnecessary for -20°C storage

*** 20ul sizes contain 0.1% BSA

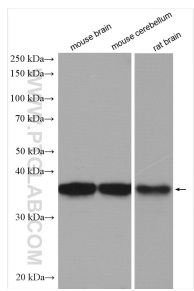
For technical support and original validation data for this product please contact:

T: 1 (888) 4PTGLAB (1-888-478-4522) (toll free in USA), or 1(312) 455-8498 (outside USA)

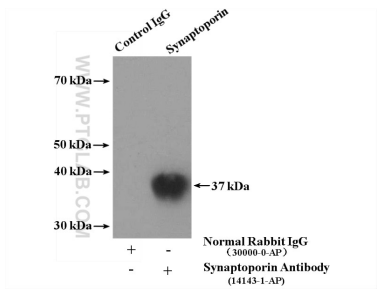
E: proteintech@ptglab.com
W: ptglab.com

This product is exclusively available under Proteintech Group brand and is not available to purchase from any other manufacturer.

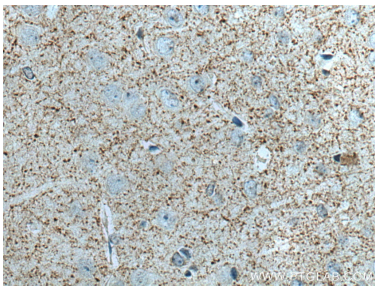
Selected Validation Data



Various lysates were subjected to SDS PAGE followed by western blot with 14143-1-AP (Synaptoporin antibody) at dilution of 1:3000 incubated at room temperature for 1.5 hours.



IP result of anti-Synaptoporin (IP:14143-1-AP, 4ug; Detection:14143-1-AP 1:500) with mouse brain tissue lysate 5200ug.



Immunohistochemical analysis of paraffin-embedded mouse brain tissue slide using 14143-1-AP (Synaptoporin antibody) at dilution of 1:400 (under 40x lens). Heat mediated antigen retrieval with Tris-EDTA buffer (pH 9.0).