

## SHMT1 Polyclonal antibody

Catalog Number: 14149-1-AP

Featured Product

10 Publications

## Basic Information

## Catalog Number:

14149-1-AP

## Size:

150ul, Concentration: 300 µg/ml by Nanodrop;

## Source:

Rabbit

## Isotype:

IgG

## Immunogen Catalog Number:

AG5330

## GenBank Accession Number:

BC038598

## GeneID (NCBI):

6470

## UNIPROT ID:

P34896

## Full Name:

serine hydroxymethyltransferase 1 (soluble)

## Calculated MW:

483 aa, 53 kDa

## Observed MW:

45-53 kDa

## Purification Method:

Antigen affinity purification

## Recommended Dilutions:

WB 1:500-1:3000

IHC 1:50-1:500

IF/ICC 1:10-1:100

## Applications

## Tested Applications:

WB, IF, IHC, ELISA

## Cited Applications:

WB, IF

## Species Specificity:

human, mouse, rat

## Cited Species:

human, mouse

**Note-IHC: suggested antigen retrieval with TE buffer pH 9.0; (\*) Alternatively, antigen retrieval may be performed with citrate buffer pH 6.0**

## Positive Controls:

WB : HeLa cells, HepG2 cells

IHC : human breast cancer tissue,

IF/ICC : HepG2 cells,

## Background Information

SHMT1 is the cellular form of serine hydroxymethyltransferase, a pyridoxal phosphate-containing enzyme that catalyzes the reversible conversion of serine and tetrahydrofolate to glycine and 5,10-methylene tetrahydrofolate. Alternative splicing of this gene results in 2 transcript variants encoding 2 different isoforms. This antibody can detect both 49 kDa and 53 kDa isoforms in western blotting.

## Notable Publications

Author	Pubmed ID	Journal	Application
Miao Zhang	36175800	Int J Legal Med	WB
Dongqing Guo	29116138	Sci Rep	WB
Muyu Xu	29791506	PLoS Pathog	WB

## Storage

## Storage:

Store at -20°C. Stable for one year after shipment.

## Storage Buffer:

PBS with 0.02% sodium azide and 50% glycerol pH 7.3.

Aliquoting is unnecessary for -20°C storage

\*\*\* 20ul sizes contain 0.1% BSA

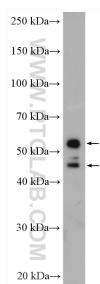
For technical support and original validation data for this product please contact:

T: 1 (888) 4PTGLAB (1-888-478-4522) (toll free in USA), or 1(312) 455-8498 (outside USA)

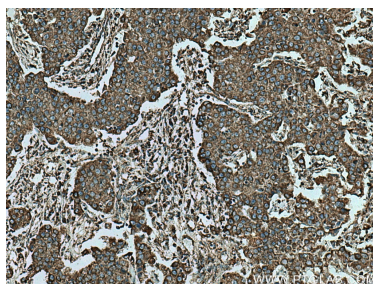
E: [proteintech@ptglab.com](mailto:proteintech@ptglab.com)  
W: [ptglab.com](http://ptglab.com)

This product is exclusively available under Proteintech Group brand and is not available to purchase from any other manufacturer.

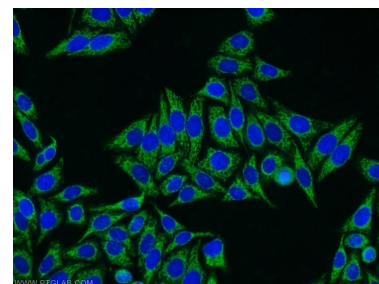
## Selected Validation Data



HeLa cells were subjected to SDS PAGE followed by western blot with 14149-1-AP (SHMT1 antibody) at dilution of 1:3000 incubated at room temperature for 1.5 hours.



Immunohistochemical analysis of paraffin-embedded human breast cancer tissue slide using 14149-1-AP (SHMT1 antibody) at dilution of 1:200 (under 10x lens). Heat mediated antigen retrieval with Tris-EDTA buffer (pH 9.0).



Immunofluorescent analysis of HepG2 cells using 14149-1-AP (SHMT1 antibody) at dilution of 1:25 and Alexa Fluor 488-conjugated AffiniPure Goat Anti-Rabbit IgG(H+L).