

For Research Use Only

# SLC25A45 Polyclonal antibody

Catalog Number: 14160-1-AP



## Basic Information

**Catalog Number:**

14160-1-AP

**Size:**

150ul , Concentration: 200 ug/ml by Nanodrop and 213 ug/ml by Bradford method using BSA as the standard;

**Source:**

Rabbit

**Isotype:**

IgG

**Immunogen Catalog Number:**

AG5342

**GenBank Accession Number:**

BC041100

**GeneID (NCBI):**

283130

**UNIPROT ID:**

Q8N413

**Full Name:**

solute carrier family 25, member 45

**Calculated MW:**

335 aa, 36 kDa

**Observed MW:**

32 kDa

**Purification Method:**

Antigen affinity purification

**Recommended Dilutions:**

WB 1:500-1:2000

IF/ICC 1:20-1:200

## Applications

**Tested Applications:**

WB, IF/ICC, ELISA

**Species Specificity:**

human, mouse, rat

**Positive Controls:**

WB : mouse skeletal muscle tissue, SH-SY5Y cells

IF/ICC : SH-SY5Y cells,

## Storage

**Storage:**

Store at -20°C. Stable for one year after shipment.

**Storage Buffer:**

PBS with 0.02% sodium azide and 50% glycerol, pH7.3

Aliquoting is unnecessary for -20°C storage

**\*\*\* 20ul sizes contain 0.1% BSA**

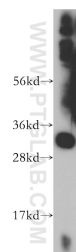
For technical support and original validation data for this product please contact:

T: 1 (888) 4PTGLAB (1-888-478-4522) (toll free in USA), or 1(312) 455-8498 (outside USA)

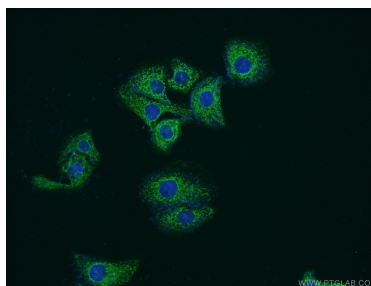
E: [proteintech@ptglab.com](mailto:proteintech@ptglab.com)  
W: [ptglab.com](http://ptglab.com)

This product is exclusively available under Proteintech Group brand and is not available to purchase from any other manufacturer.

## Selected Validation Data



mouse skeletal muscle tissue were subjected to SDS PAGE followed by western blot with 14160-1-AP (SLC25A45 antibody) at dilution of 1:400 incubated at room temperature for 1.5 hours.



Immunofluorescent analysis of SH-SY5Y cells using 14160-1-AP (SLC25A45 antibody) at dilution of 1:50 and Alexa Fluor 488-conjugated AffiniPure Goat Anti-Rabbit IgG(H+L).