

For Research Use Only

PTH2R Polyclonal antibody

Catalog Number: 14166-1-AP

1 Publications



Basic Information

Catalog Number:

14166-1-AP

Size:

150ul , Concentration: 260 ug/ml by Nanodrop and 240 ug/ml by Bradford method using BSA as the standard;

Source:

Rabbit

Isotype:

IgG

Immunogen Catalog Number:

AG5364

GenBank Accession Number:

BC036811

GeneID (NCBI):

5746

UNIPROT ID:

P49190

Full Name:

parathyroid hormone 2 receptor

Calculated MW:

550 aa, 62 kDa

Observed MW:

62-66 kDa

Purification Method:

Antigen affinity purification

Recommended Dilutions:

WB: 1:500-1:1000

IHC: 1:20-1:200

FC (Intra): 0.40 ug per 10⁶ cells in a 100 µl suspension

Applications

Tested Applications:

WB, IHC, ELISA

Cited Applications:

WB

Species Specificity:

human, mouse, rat

Cited Species:

human

Note-IHC: suggested antigen retrieval with TE buffer pH 9.0; (*) Alternatively, antigen retrieval may be performed with citrate buffer pH 6.0

Positive Controls:

WB : L02 cells, BxPC-3 cells, human testis tissue, mouse liver tissue, mouse pancreas tissue, mouse testis tissue

IHC : human pancreas cancer tissue, human renal cell carcinoma tissue

FC (Intra) : BxPC-3 cells,

Notable Publications

| Author | Pubmed ID | Journal | Application |
|-----------|-----------|---------------|-------------|
| Kento Ono | 40287908 | Int J Hematol | WB |

Storage

Storage:

Store at -20°C. Stable for one year after shipment.

Storage Buffer:

PBS with 0.02% sodium azide and 50% glycerol, pH7.3

Aliquoting is unnecessary for -20°C storage

*** 20ul sizes contain 0.1% BSA

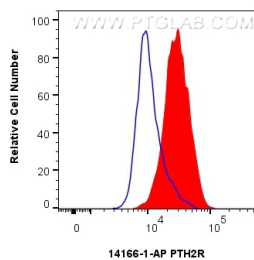
For technical support and original validation data for this product please contact:

T: 1 (888) 4PTGLAB (1-888-478-4522) (toll free in USA), or 1(312) 455-8498 (outside USA)

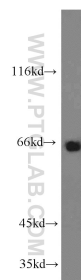
E: proteintech@ptglab.com
W: ptglab.com

This product is exclusively available under Proteintech Group brand and is not available to purchase from any other manufacturer.

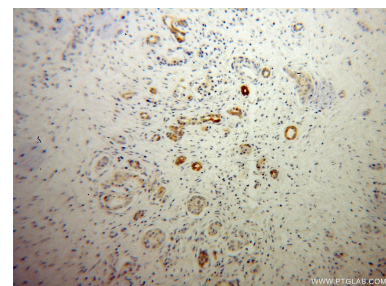
Selected Validation Data



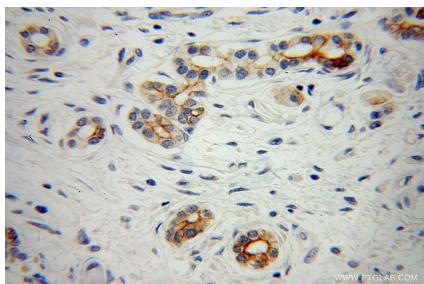
1x10⁶ BxPC-3 cells were intracellularly stained with 0.4 ug PTH2R Polyclonal antibody (14166-1-AP) and CoraLite®488-Conjugated Goat Anti-Rabbit IgG(H+L) (SA00013-2)(red), or 0.4 ug Rabbit IgG control Rabbit PolyAb (30000-0-AP) (blue). Cells were fixed with 4% PFA and permeabilized with Flow Cytometry Perm Buffer (PF00011-C).



L02 cells were subjected to SDS PAGE followed by western blot with 14166-1-AP (PTH2R antibody) at dilution of 1:500 incubated at room temperature for 1.5 hours.



Immunohistochemical analysis of paraffin-embedded human pancreas cancer using 14166-1-AP (PTH2R antibody) at dilution of 1:50 (under 10x lens).



Immunohistochemical analysis of paraffin-embedded human pancreas cancer using 14166-1-AP (PTH2R antibody) at dilution of 1:50 (under 40x lens).