

For Research Use Only

Alpha 1B-Glycoprotein Polyclonal antibody

Catalog Number: 14181-1-AP



Basic Information

Catalog Number: 14181-1-AP	GenBank Accession Number: BC035719	Purification Method: Antigen affinity purification
Size: 150ul , Concentration: 500 ug/ml by Nanodrop and 153 ug/ml by Bradford method using BSA as the standard;	GeneID (NCBI): 1	Recommended Dilutions: WB 1:2000-1:20000 IHC 1:2500-1:10000 IF/ICC 1:10-1:100
Source: Rabbit	UNIPROT ID: P04217	
Isotype: IgG	Full Name: alpha-1-B glycoprotein	
Immunogen Catalog Number: AG5414	Calculated MW: 54 kDa	
	Observed MW: 65 kDa	

Applications

Tested Applications: WB, IHC, IF/ICC, ELISA	Positive Controls: WB : human plasma tissue, BxPC-3 cells, MCF-7 cells, mouse kidney tissue IHC : human hepatocirrhosis tissue, IF/ICC : HepG2 cells,
Species Specificity: human, mouse	
Note-IHC: suggested antigen retrieval with TE buffer pH 9.0; (*) Alternatively, antigen retrieval may be performed with citrate buffer pH 6.0	

Background Information

Alpha-1B-glycoprotein (A1BG) is a plasma protein and is a member of the immunoglobulin superfamily. A1BG contains 474 amino acids and has 5 intrachain disulfide bonds. It has been reported that cysteine-rich secretory protein 3 (CRISP-3) is a specific and high-affinity ligand of A1BG. A1BG-CRISP-3 complex displays a similar function in protecting the circulation from a potentially harmful effect of free CRISP3 (PMID: 15461460).

Storage

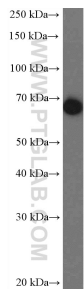
Storage:
Store at -20°C. Stable for one year after shipment.
Storage Buffer:
PBS with 0.02% sodium azide and 50% glycerol pH 7.3.
Aliquoting is unnecessary for -20°C storage

*** 20ul sizes contain 0.1% BSA

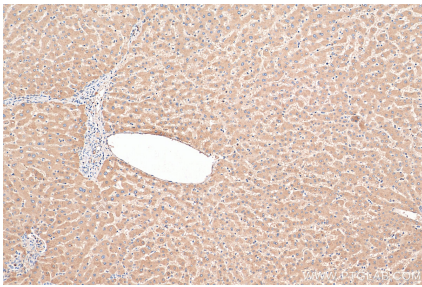
For technical support and original validation data for this product please contact:
T: 1 (888) 4PTGLAB (1-888-478-4522) (toll free in USA), or 1(312) 455-8498 (outside USA)
E: proteintech@ptglab.com
W: ptglab.com

This product is exclusively available under Proteintech Group brand and is not available to purchase from any other manufacturer.

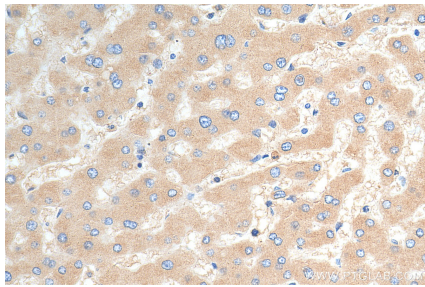
Selected Validation Data



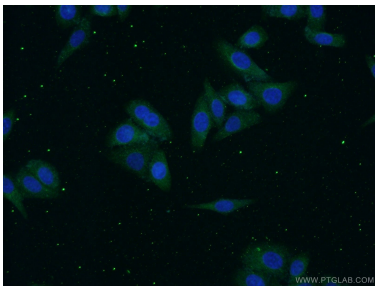
human plasma were subjected to SDS PAGE followed by western blot with 14181-1-AP (alpha-1B-glycoprotein antibody) at dilution of 1:5000 incubated at room temperature for 1.5 hours.



Immunohistochemical analysis of paraffin-embedded human hepatocirrhosis tissue slide using 14181-1-AP (Alpha 1B-Glycoprotein antibody) at dilution of 1:5000 (under 10x lens). Heat mediated antigen retrieval with Tris-EDTA buffer (pH 9.0).



Immunohistochemical analysis of paraffin-embedded human hepatocirrhosis tissue slide using 14181-1-AP (Alpha 1B-Glycoprotein antibody) at dilution of 1:5000 (under 40x lens). Heat mediated antigen retrieval with Tris-EDTA buffer (pH 9.0).



Immunofluorescent analysis of (-20°C Ethanol) fixed HepG2 cells using 14181-1-AP (alpha-1B-glycoprotein antibody) at dilution of 1:25 and Alexa Fluor 488-Conjugated Goat Anti-Rabbit IgG(H+L).