

For Research Use Only

PKC Delta Polyclonal antibody

Catalog Number: 14188-1-AP

Featured Product

10 Publications



Basic Information

Catalog Number:

14188-1-AP

Size:

150ul, Concentration: 400 ug/ml by Nanodrop;

Source:

Rabbit

Isotype:

IgG

Immunogen Catalog Number:

AG5473

GenBank Accession Number:

BC043350

GeneID (NCBI):

5580

UNIPROT ID:

Q05655

Full Name:

protein kinase C, delta

Calculated MW:

78 kDa

Observed MW:

70-80 kDa

Purification Method:

Antigen affinity purification

Recommended Dilutions:

WB 1:1000-1:4000

IP 0.5-4.0 ug for 1.0-3.0 mg of total protein lysate

IHC 1:50-1:500

IF/ICC 1:50-1:500

Applications

Tested Applications:

WB, IHC, IF/ICC, IP, ELISA

Cited Applications:

WB, IHC, IF

Species Specificity:

human, mouse, rat

Cited Species:

human, mouse, rat

Note-IHC: suggested antigen retrieval with TE buffer pH 9.0; (*) Alternatively, antigen retrieval may be performed with citrate buffer pH 6.0

Positive Controls:

WB : NIH/3T3 cells, C6 cells, mouse brain tissue, rat brain tissue

IP : mouse brain tissue,

IHC : human ovary cancer tissue,

IF/ICC : Saos-2 cells, A431 cells, HeLa cells

Background Information

PKC Delta is a member of the protein kinase C family of serine- and threonine-specific protein kinases. The encoded protein is activated by diacylglycerol and is both a tumor suppressor and a positive regulator of cell cycle progression. Also, this protein can positively or negatively regulate apoptosis. Defects in this gene are a cause of autoimmune lymphoproliferative syndrom.

Notable Publications

Author	Pubmed ID	Journal	Application
Chunmin Ma	34861246	Chem Biol Interact	WB
Lingli Sun	35302141	Food Funct	WB,IHC
Hongyi Zhou	31185001	JCI Insight	WB

Storage

Storage:

Store at -20°C. Stable for one year after shipment.

Storage Buffer:

PBS with 0.02% sodium azide and 50% glycerol pH 7.3.

Aliquoting is unnecessary for -20°C storage

*** 20ul sizes contain 0.1% BSA

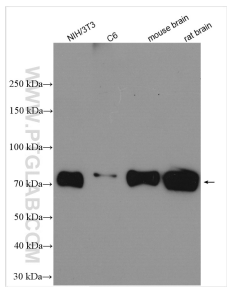
For technical support and original validation data for this product please contact:

T: 1 (888) 4PTGLAB (1-888-478-4522) (toll free in USA), or 1(312) 455-8498 (outside USA)

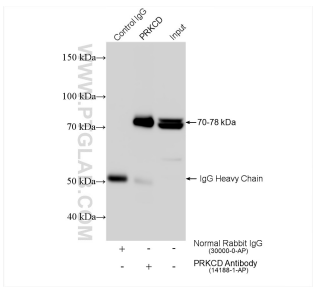
E: proteintech@ptglab.com
W: ptglab.com

This product is exclusively available under Proteintech Group brand and is not available to purchase from any other manufacturer.

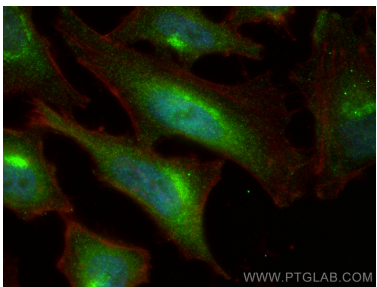
Selected Validation Data



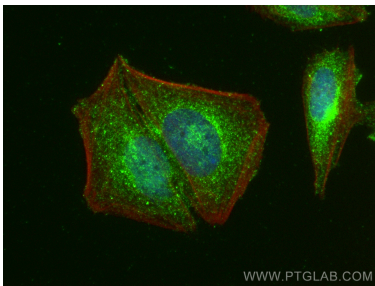
Various lysates were subjected to SDS PAGE followed by western blot with 14188-1-AP (PKC Delta antibody) at dilution of 1:2000 incubated at room temperature for 1.5 hours.



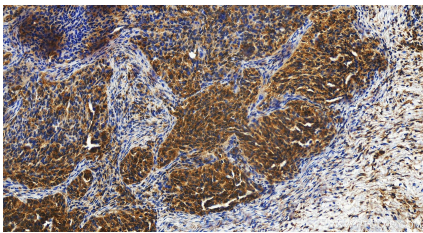
IP result of anti-PKC Delta (IP:14188-1-AP, 4ug; Detection:14188-1-AP 1:2000) with mouse brain tissue lysate 1280 ug.



Immunofluorescent analysis of (4% PFA) fixed HeLa cells using PKC Delta antibody (14188-1-AP) at dilution of 1:200 and CoraLite@488-Conjugated AffiniPure Goat Anti-Rabbit IgG(H+L), CL594-phalloidin (red).



Immunofluorescent analysis of (4% PFA) fixed Saos-2 cells using PKC Delta antibody (14188-1-AP) at dilution of 1:200 and CoraLite@488-Conjugated AffiniPure Goat Anti-Rabbit IgG(H+L), CL594-phalloidin (red).



Immunohistochemical analysis of paraffin-embedded human ovary cancer tissue slide using 14188-1-AP (PKC Delta antibody) at dilution of 1:200 (under 20x lens). Heat mediated antigen retrieval with Tris-EDTA buffer (pH 9.0).