

For Research Use Only

CAT-1 Polyclonal antibody

Catalog Number: 14195-1-AP

Featured Product

29 Publications



Basic Information

Catalog Number:

14195-1-AP

Size:

150ul, Concentration: 400 ug/ml by Nanodrop;

Source:

Rabbit

Isotype:

IgG

Immunogen Catalog Number:

AG5398

GenBank Accession Number:

BC063303

GeneID (NCBI):

6541

UNIPROT ID:

P30825

Full Name:

solute carrier family 7 (cationic amino acid transporter, y+ system), member 1

Calculated MW:

68 kDa

Observed MW:

67-70 kDa

Purification Method:

Antigen affinity purification

Recommended Dilutions:

WB 1:500-1:2000

IHC 1:20-1:200

Applications

Tested Applications:

WB, IHC, ELISA

Cited Applications:

WB, IHC, IF, ColP

Species Specificity:

human, mouse, rat

Cited Species:

human, mouse, rat, pig, canine

Note-IHC: suggested antigen retrieval with TE buffer pH 9.0; (*) Alternatively, antigen retrieval may be performed with citrate buffer pH 6.0

Positive Controls:

WB: mouse liver tissue, Jurkat cells, HepG2 cells, rat brain/liver tissue, mouse heart tissue, rat liver tissue

IHC: human osteosarcoma tissue,

Notable Publications

Author	Pubmed ID	Journal	Application
Ricardo A Cordova	36107759	Elife	WB
Shijing You	36131790	J Oncol	IF, IHC
Kohlhaas Christine F CF	21871446	Biochem Biophys Res Commun	WB

Storage

Storage:

Store at -20°C. Stable for one year after shipment.

Storage Buffer:

PBS with 0.02% sodium azide and 50% glycerol pH 7.3.

Aliquoting is unnecessary for -20°C storage

*** 20ul sizes contain 0.1% BSA

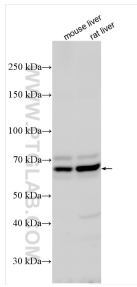
For technical support and original validation data for this product please contact:

T: 1 (888) 4PTGLAB (1-888-478-4522) (toll free in USA), or 1(312) 455-8498 (outside USA)

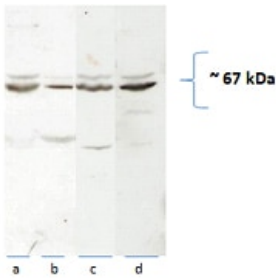
E: proteintech@ptglab.com
W: ptglab.com

This product is exclusively available under Proteintech Group brand and is not available to purchase from any other manufacturer.

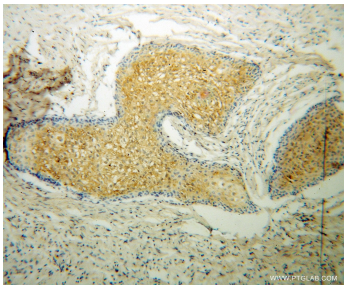
Selected Validation Data



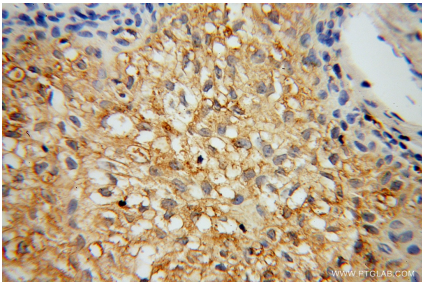
Various lysates were subjected to SDS PAGE followed by western blot with 14195-1-AP (CAT-1 antibody) at dilution of 1:1000 incubated at room temperature for 1.5 hours.



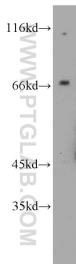
WB result of 14195-1-AP from Dilwar in Rat tissue. Rat brain (a), heart (b) liver (c) mitochondria and liver homogenate (d), (40 ug with 10% PAGE) probed with 1:1000 dilution.



Immunohistochemical analysis of paraffin-embedded human osteosarcoma using 14195-1-AP (CAT-1 antibody) at dilution of 1:100 (under 10x lens).



Immunohistochemical analysis of paraffin-embedded human osteosarcoma using 14195-1-AP (CAT-1 antibody) at dilution of 1:100 (under 40x lens).



mouse liver tissue were subjected to SDS PAGE followed by western blot with 14195-1-AP (CAT-1 antibody) at dilution of 1:800 incubated at room temperature for 1.5 hours.