

For Research Use Only

CREB5 Polyclonal antibody

Catalog Number: 14196-1-AP

Featured Product

6 Publications



Basic Information

Catalog Number:

14196-1-AP

Size:

150ul, Concentration: 387 ug/ml by Nanodrop and 387 ug/ml by Bradford method using BSA as the standard;

Source:

Rabbit

Isotype:

IgG

Immunogen Catalog Number:

AG5399

GenBank Accession Number:

BC059400

GeneID (NCBI):

9586

UNIPROT ID:

Q02930

Full Name:

cAMP responsive element binding protein 5

Calculated MW:

57 kDa

Observed MW:

57 kDa

Purification Method:

Antigen affinity purification

Recommended Dilutions:

WB 1:500-1:3200

Applications

Tested Applications:

WB, ELISA

Cited Applications:

WB, IF

Species Specificity:

human

Cited Species:

human

Positive Controls:

WB : HepG2 cells, HeLa cells, human brain tissue, MCF-7 cells

Background Information

cyclic AMP responsive element binding protein 5 (CREB5), also known as CRE-BPA, a member of the cAMP response element binding protein family, is a transcription factor specifically expressed in superficial zone articular chondrocytes and is required for TGF- β and EGFR signaling. Knockdown of CREB5 decreased the c-jun and c-fos expression levels in HC-a cells (PMID: 38549717). Increased CREB5 expression is positively correlated with tumor cell invasion and a poor prognosis for cancer patients with epithelial ovarian cancer and hepatocellular carcinoma (PMID: 38418476). This protein specifically binds to CRE as a homodimer or a heterodimer with c-Jun or CRE-BP1, and functions as a CRE-dependent trans-activator. Alternatively spliced transcript variants encoding different isoforms have been identified (PMID: 33712729).

Notable Publications

| Author | Pubmed ID | Journal | Application |
|----------------|-----------|--------------------|-------------|
| Takao Kitagawa | 36194562 | PLoS One | WB |
| Di Xu | 35100921 | Int J Hyperthermia | WB |
| Jiannan Qiu | 36565037 | Cancer Med | WB |

Storage

Storage:

Store at -20°C. Stable for one year after shipment.

Storage Buffer:

PBS with 0.02% sodium azide and 50% glycerol pH 7.3.

Aliquoting is unnecessary for -20°C storage

*** 20ul sizes contain 0.1% BSA

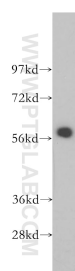
For technical support and original validation data for this product please contact:

T: 1 (888) 4PTGLAB (1-888-478-4522) (toll free in USA), or 1(312) 455-8498 (outside USA)

E: proteintech@ptglab.com
W: ptglab.com

This product is exclusively available under Proteintech Group brand and is not available to purchase from any other manufacturer.

Selected Validation Data



HepG2 cells were subjected to SDS PAGE followed by western blot with 14196-1-AP (CREB5 antibody) at dilution of 1:500 incubated at room temperature for 1.5 hours.