

For Research Use Only

TRIM24 Polyclonal antibody

Catalog Number: 14208-1-AP

Featured Product

44 Publications



Basic Information

Catalog Number:

14208-1-AP

Size:

150ul, Concentration: 800 ug/ml by Nanodrop;

Source:

Rabbit

Isotype:

IgG

Immunogen Catalog Number:

AG5417

GenBank Accession Number:

BC028689

GeneID (NCBI):

8805

UNIPROT ID:

O15164

Full Name:

tripartite motif-containing 24

Calculated MW:

117 kDa

Observed MW:

117 kDa

Purification Method:

Antigen affinity purification

Recommended Dilutions:

WB 1:2000-1:12000

IP 0.5-4.0 ug for 1.0-3.0 mg of total protein lysate

IHC 1:50-1:200

IF/ICC 1:200-1:800

Applications

Tested Applications:

WB, IHC, IF/ICC, IP, ELISA

Cited Applications:

WB, IHC, IF, IP, CoIP, ChIP, RIP

Species Specificity:

human, mouse, rat

Cited Species:

human, mouse, rat

Note-IHC: suggested antigen retrieval with TE buffer pH 9.0; (*) Alternatively, antigen retrieval may be performed with citrate buffer pH 6.0

Positive Controls:

WB : HeLa cells, L02 cells, BGC-823 cells, human heart tissue, mouse skeletal muscle tissue, MCF-7 cells

IP : HeLa cells,

IHC : human prostate cancer tissue,

IF/ICC : HeLa cells,

Background Information

TRIM24, also named as RNF82, TIF1 and TIF1A, interacts selectively in vitro with the AF2-activating domain of the estrogen receptors. Association with DNA-bound estrogen receptors, it requires the presence of estradiol. It is a regulation protein of P53. Defects in TRIM24 are a cause of thyroid papillary carcinoma (TPC) which is a common tumor of the thyroid that typically arises as an irregular, solid or cystic mass from otherwise normal thyroid tissue.

Notable Publications

Author	Pubmed ID	Journal	Application
Jun Chi	27689360	Aging (Albany NY)	WB, IHC
Tao Yu	31554795	Nat Commun	WB
Yanai Zhan	26396593	Epigenetics Chromatin	WB, IF, IP

Storage

Storage:

Store at -20°C. Stable for one year after shipment.

Storage Buffer:

PBS with 0.02% sodium azide and 50% glycerol pH 7.3.

Aliquoting is unnecessary for -20°C storage

*** 20ul sizes contain 0.1% BSA

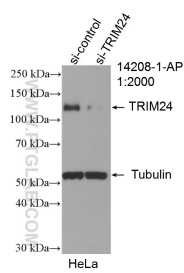
For technical support and original validation data for this product please contact:

T: 1 (888) 4PTGLAB (1-888-478-4522) (toll free in USA), or 1(312) 455-8498 (outside USA)

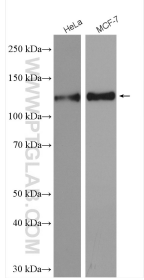
E: proteintech@ptglab.com
W: ptglab.com

This product is exclusively available under Proteintech Group brand and is not available to purchase from any other manufacturer.

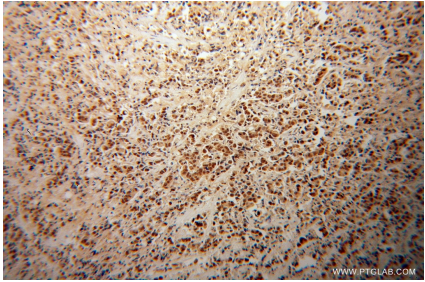
Selected Validation Data



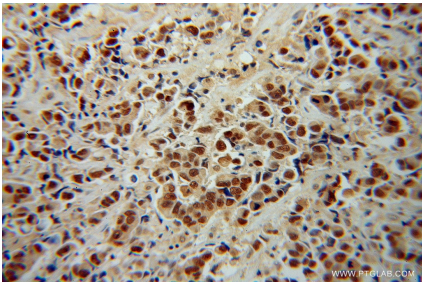
WB result of TRIM24 antibody (14208-1-AP; 1:2000; incubated at room temperature for 1.5 hours) with sh-Control and sh-TRIM24 transfected HeLa cells.



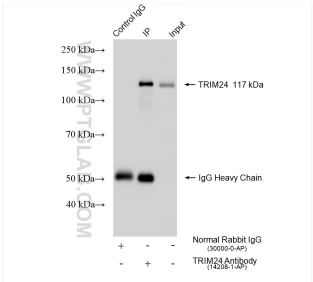
Various lysates were subjected to SDS PAGE followed by western blot with 14208-1-AP (TRIM24 antibody) at dilution of 1:6000 incubated at room temperature for 1.5 hours.



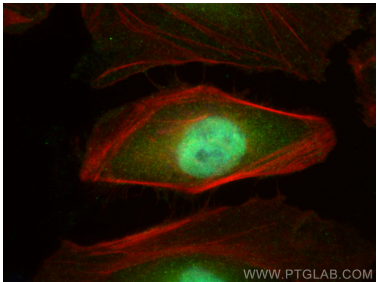
Immunohistochemical analysis of paraffin-embedded human prostate cancer using 14208-1-AP (TRIM24 antibody) at dilution of 1:100 (under 10x lens).



Immunohistochemical analysis of paraffin-embedded human prostate cancer using 14208-1-AP (TRIM24 antibody) at dilution of 1:100 (under 40x lens).



IP result of anti-TRIM24 (IP:14208-1-AP, 4ug; Detection:14208-1-AP 1:6000) with HeLa cells lysate 1085 ug.



Immunofluorescent analysis of (4% PFA) fixed HeLa cells using TRIM24 antibody (14208-1-AP) at dilution of 1:400 and Multi-rAb CoraLite® Plus 488-Goat Anti-Rabbit Recombinant Secondary Antibody (H+L) (RGAR002), CL594-phalloidin (red).