

For Research Use Only

MPI Polyclonal antibody

Catalog Number: 14234-1-AP

Featured Product

2 Publications



Basic Information

Catalog Number:

14234-1-AP

Size:

150ul, Concentration: 700 ug/ml by Nanodrop;

Source:

Rabbit

Isotype:

IgG

Immunogen Catalog Number:

AG5475

GenBank Accession Number:

BC046357

GeneID (NCBI):

4351

UNIPROT ID:

P34949

Full Name:

mannose phosphate isomerase

Calculated MW:

47 kDa

Observed MW:

40-47 kDa

Purification Method:

Antigen affinity purification

Recommended Dilutions:

WB 1:2000-1:10000

IP 0.5-4.0 ug for 1.0-3.0 mg of total protein lysate

IF/ICC 1:200-1:800

Applications

Tested Applications:

WB, IF/ICC, IP, ELISA

Cited Applications:

WB

Species Specificity:

human, mouse, rat

Cited Species:

human, rat

Positive Controls:

WB : mouse brain tissue, HEK-293 cells, human brain tissue, rat brain tissue

IP : mouse brain tissue,

IF/ICC : NIH/3T3 cells,

Background Information

MPI (mannose-6-phosphate isomerase) is also named as PMI1 and belongs to the mannose-6-phosphate isomerase type 1 family. It is a zinc metalloenzyme that catalyzes the reversible isomerization of mannose-6-phosphate and fructose-6-phosphate. MPI plays a critical role in maintaining the supply of D-mannose derivatives, which are required for most glycosylation reactions. This protein has 2 isoforms produced by alternative splicing.

Notable Publications

Author	Pubmed ID	Journal	Application
Pablo Sierra Gonzalez	30464341	Nature	WB
Zheng-Lin Dong	38711073	Mil Med Res	WB

Storage

Storage:

Store at -20°C. Stable for one year after shipment.

Storage Buffer:

PBS with 0.02% sodium azide and 50% glycerol pH 7.3.

Aliquoting is unnecessary for -20°C storage

*** 20ul sizes contain 0.1% BSA

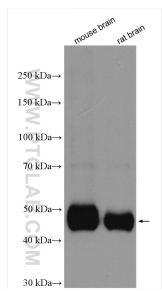
For technical support and original validation data for this product please contact:

T: 1 (888) 4PTGLAB (1-888-478-4522) (toll free in USA), or 1(312) 455-8498 (outside USA)

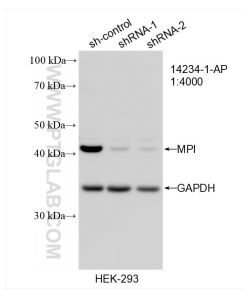
E: proteintech@ptglab.com
W: ptglab.com

This product is exclusively available under Proteintech Group brand and is not available to purchase from any other manufacturer.

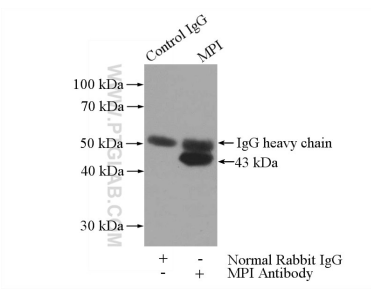
Selected Validation Data



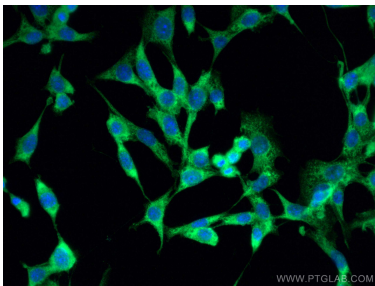
Various lysates were subjected to SDS PAGE followed by western blot with 14234-1-AP (MPI antibody) at dilution of 1:5000 incubated at room temperature for 1.5 hours.



WB result of MPI antibody (14234-1-AP; 1:4000; incubated at room temperature for 1.5 hours) with sh-Control and sh-MPI transfected HEK-293 cells.



IP result of anti-MPI (IP:14234-1-AP, 4ug; Detection:14234-1-AP 1:1000) with mouse brain tissue lysate 4000ug.



Immunofluorescent analysis of (-20°C Ethanol) fixed NIH/3T3 cells using MPI antibody (14234-1-AP) at dilution of 1:400 and CoraLite®488-Conjugated AffiniPure Goat Anti-Rabbit IgG(H+L).