

For Research Use Only

MMP19 Polyclonal antibody

Catalog Number: 14244-1-AP **6 Publications**



Basic Information

Catalog Number: 14244-1-AP	GenBank Accession Number: BC050368	Purification Method: Antigen affinity purification
Size: 150ul , Concentration: 350 µg/ml by Nanodrop and 300 µg/ml by Bradford method using BSA as the standard;	GeneID (NCBI): 4327	Recommended Dilutions: WB 1:500-1:2000 IP 0.5-4.0 ug for 1.0-3.0 mg of total protein lysate IHC 1:20-1:200 IF 1:50-1:500
Source: Rabbit	UNIPROT ID: Q99542	
Isotype: IgG	Full Name: matrix metalloproteinase 19	
Immunogen Catalog Number: AG5501	Calculated MW: 57 kDa	
	Observed MW: 57-60 kDa	

Applications

Tested Applications: WB, IP, IF, IHC, ELISA	Positive Controls: WB : SH-SY5Y cells, human placenta tissue IP : human placenta tissue, IHC : human liver cancer tissue, IF : SH-SY5Y cells,
Cited Applications: WB, IHC	
Species Specificity: human	
Cited Species: human, rat, mouse	
Note-IHC: suggested antigen retrieval with TE buffer pH 9.0; (*) Alternatively, antigen retrieval may be performed with citrate buffer pH 6.0	

Background Information

MMP19(matrix metalloproteinase-19) has the capacity to degrade several basement membrane proteins such as type IV collagen, laminin, tenascin C, and nidogen. It is expressed by microvascular endothelial cells in vitro as well as by capillaries in the inflamed synovial membrane, whereas its expression is absent in quiescent macrovascular endothelial cells of large arteries and veins . And it is also detected in capillaries of normal mammary tissue, benign mammary carcinomas and in skin capillaries(PMID:15241558).

Notable Publications

Author	Pubmed ID	Journal	Application
Fangfang Ge	36386128	Front Pharmacol	WB
Haiyang Shu	34708132	J Immunol Res	WB
Zong-Kun Chang	29323744	J Cell Biochem	WB,IHC

Storage

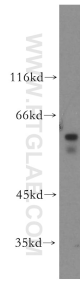
Storage:
Store at -20°C. Stable for one year after shipment.
Storage Buffer:
PBS with 0.02% sodium azide and 50% glycerol pH 7.3.
Aliquoting is unnecessary for -20°C storage

*** 20ul sizes contain 0.1% BSA

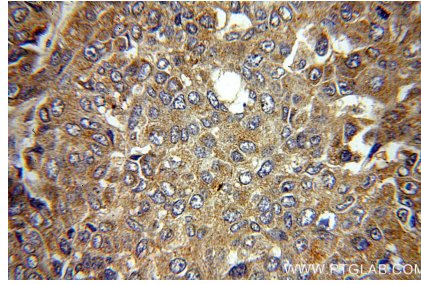
For technical support and original validation data for this product please contact:
T: 1 (888) 4PTGLAB (1-888-478-4522) (toll free in USA), or 1(312) 455-8498 (outside USA)
E: proteintech@ptglab.com
W: ptglab.com

This product is exclusively available under Proteintech Group brand and is not available to purchase from any other manufacturer.

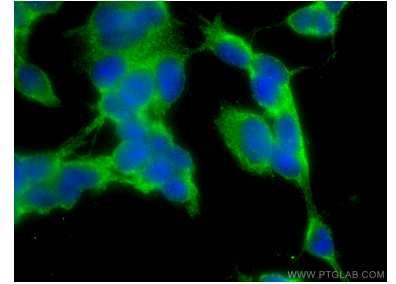
Selected Validation Data



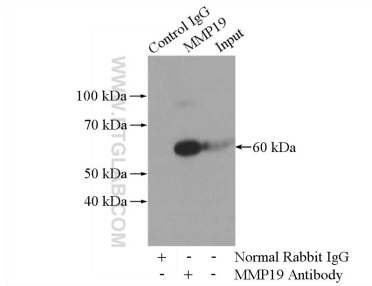
SH-SY5Y cells were subjected to SDS PAGE followed by western blot with 14244-1-AP (MMP19 antibody) at dilution of 1:300 incubated at room temperature for 1.5 hours.



Immunohistochemical analysis of paraffin-embedded human liver cancer using 14244-1-AP (MMP19 antibody) at dilution of 1:50 (under 40x lens).



Immunofluorescent analysis of (-20°C Ethanol) fixed SH-SY5Y cells using MMP19 antibody (14244-1-AP) at dilution of 1:200 and CoraLite@488-Conjugated AffiniPure Goat Anti-Rabbit IgG(H+L).



IP result of anti-MMP19 (IP:14244-1-AP, 4ug; Detection:14244-1-AP 1:500) with human placenta tissue lysate 1520ug.