

For Research Use Only

APLF Polyclonal antibody

Catalog Number: 14252-1-AP

1 Publications



Basic Information

Catalog Number:

14252-1-AP

Size:

150ul, Concentration: 500 ug/ml by Nanodrop and 240 ug/ml by Bradford method using BSA as the standard;

Source:

Rabbit

Isotype:

IgG

Immunogen Catalog Number:

AG5525

GenBank Accession Number:

BC041144

GeneID (NCBI):

200558

UNIPROT ID:

Q8IW19

Full Name:

apratxin and PNKP like factor

Calculated MW:

57 kDa

Observed MW:

60 kDa

Purification Method:

Antigen affinity purification

Recommended Dilutions:

WB 1:500-1:1000

Applications

Tested Applications:

WB, ELISA

Species Specificity:

human

Positive Controls:

WB : PC-3 cells,

Notable Publications

Author	Pubmed ID	Journal	Application
Matthew C J Yip	31011209	Nat Struct Mol Biol	

Storage

Storage:

Store at -20°C. Stable for one year after shipment.

Storage Buffer:

PBS with 0.02% sodium azide and 50% glycerol pH 7.3.

Aliquoting is unnecessary for -20°C storage

*** 20ul sizes contain 0.1% BSA

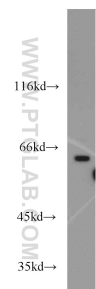
For technical support and original validation data for this product please contact:

T: 1 (888) 4PTGLAB (1-888-478-4522) (toll free in USA), or 1(312) 455-8498 (outside USA)

E: proteintech@ptglab.com
W: ptglab.com

This product is exclusively available under Proteintech Group brand and is not available to purchase from any other manufacturer.

Selected Validation Data



PC-3 cells were subjected to SDS PAGE followed by western blot with 14252-1-AP (APLF antibody) at dilution of 1:600 incubated at room temperature for 1.5 hours.