

For Research Use Only

MTP18 Polyclonal antibody

Catalog Number: 14257-1-AP

Featured Product

6 Publications



Basic Information

Catalog Number:

14257-1-AP

Size:

150ul, Concentration: 300 ug/ml by Nanodrop and 220 ug/ml by Bradford method using BSA as the standard;

Source:

Rabbit

Isotype:

IgG

Immunogen Catalog Number:

AG5530

GenBank Accession Number:

BC038831

GeneID (NCBI):

51537

UNIPROT ID:

Q9UDX5

Full Name:

mitochondrial protein 18 kDa

Calculated MW:

18 kDa

Observed MW:

16-18 kDa

Purification Method:

Antigen affinity purification

Recommended Dilutions:

WB 1:500-1:1000

IP 0.5-4.0 ug for 1.0-3.0 mg of total protein lysate

IHC 1:100-1:400

Applications

Tested Applications:

WB, IP, IHC, ELISA

Cited Applications:

WB, IHC

Species Specificity:

human, mouse, rat

Cited Species:

human, mouse

Note-IHC: suggested antigen retrieval with TE buffer pH 9.0; (*) Alternatively, antigen retrieval may be performed with citrate buffer pH 6.0

Positive Controls:

WB : mouse skeletal muscle tissue, mouse heart tissue

IP : mouse heart tissue,

IHC : human heart tissue,

Notable Publications

Author	Pubmed ID	Journal	Application
Yu Zhang	30237394	Cell Death Dis	IHC
Hidenori Otera	26903540	J Cell Biol	WB
Tingying Xiao	31814213	Cell Biol Int	WB

Storage

Storage:

Store at -20°C. Stable for one year after shipment.

Storage Buffer:

PBS with 0.02% sodium azide and 50% glycerol pH 7.3.

Aliquoting is unnecessary for -20°C storage

*** 20ul sizes contain 0.1% BSA

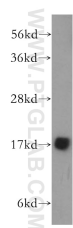
For technical support and original validation data for this product please contact:

T: 1 (888) 4PTGLAB (1-888-478-4522) (toll free in USA), or 1(312) 455-8498 (outside USA)

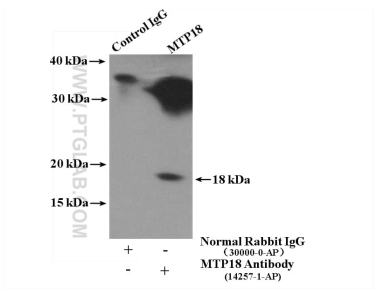
E: proteintech@ptglab.com
W: ptglab.com

This product is exclusively available under Proteintech Group brand and is not available to purchase from any other manufacturer.

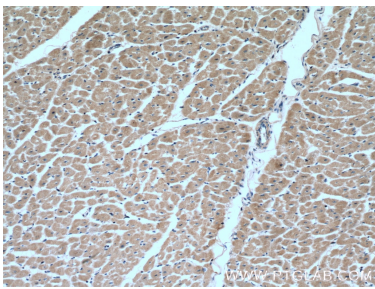
Selected Validation Data



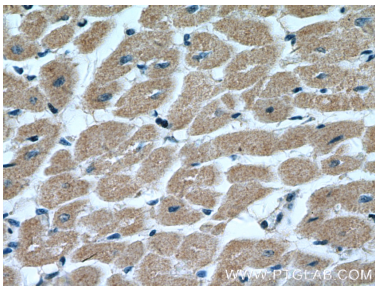
mouse skeletal muscle tissue were subjected to SDS PAGE followed by western blot with 14257-1-AP (MTP18 antibody) at dilution of 1:300 incubated at room temperature for 1.5 hours.



IP result of anti-MTP18 (IP:14257-1-AP, 4ug; Detection:14257-1-AP 1:500) with mouse heart tissue lysate 4000ug.



Immunohistochemical analysis of paraffin-embedded human heart tissue slide using 14257-1-AP (MTP18 Antibody) at dilution of 1:200 (under 10x lens).



Immunohistochemical analysis of paraffin-embedded human heart tissue slide using 14257-1-AP (MTP18 Antibody) at dilution of 1:200 (under 40x lens).