

For Research Use Only

ZWILCH Polyclonal antibody

Catalog Number: 14281-1-AP **2 Publications**



Basic Information

Catalog Number: 14281-1-AP	GenBank Accession Number: BC036900	Purification Method: Antigen affinity purification
Size: 150ul , Concentration: 300 µg/ml by Nanodrop and 267 µg/ml by Bradford method using BSA as the standard;	GeneID (NCBI): 55055	Recommended Dilutions: WB 1:500-1:1000 IHC 1:20-1:200
Source: Rabbit	Full Name: Zwilch, kinetochore associated, homolog (Drosophila)	
Isotype: IgG	Calculated MW: 67 kDa	
Immunogen Catalog Number: AG5454	Observed MW: ~60 kDa	

Applications

Tested Applications: IHC, WB, ELISA	Positive Controls: WB : PC-3 cells, IHC : human colon cancer tissue,
Cited Applications: IHC	
Species Specificity: human, mouse, rat	
Cited Species: human	

Note-IHC: suggested antigen retrieval with TE buffer pH 9.0; (*) Alternatively, antigen retrieval may be performed with citrate buffer pH 6.0

Background Information

ZWILCH is a new component of the ZW10/ROD complex. The complex is a key player in the spindle checkpoint. ZWILCH has two isoforms with MW 67 kDa and 54 kDa.

Notable Publications

Author	Pubmed ID	Journal	Application
Fengjie Yuan	31291454	Nucleic Acids Res	
Małgorzata Blatkiewicz	37189849	Biomedicines	IHC

Storage

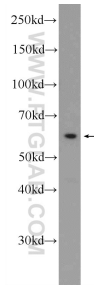
Storage:
Store at -20°C. Stable for one year after shipment.
Storage Buffer:
PBS with 0.02% sodium azide and 50% glycerol pH 7.3.
Aliquoting is unnecessary for -20°C storage

*** 20ul sizes contain 0.1% BSA

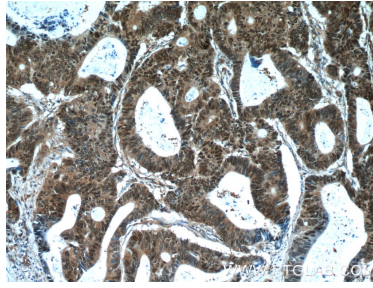
For technical support and original validation data for this product please contact:
T: 1 (888) 4PTGLAB (1-888-478-4522) (toll free in USA), or 1(312) 455-8498 (outside USA)
E: proteintech@ptglab.com
W: ptglab.com

This product is exclusively available under Proteintech Group brand and is not available to purchase from any other manufacturer.

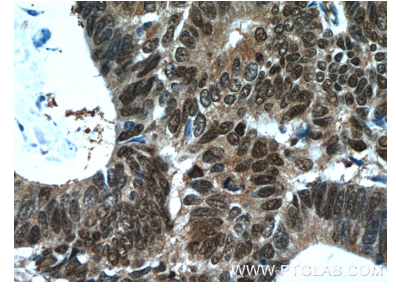
Selected Validation Data



PC-3 cells were subjected to SDS PAGE followed by western blot with 14281-1-AP (ZWILCH Antibody) at dilution of 1:500 incubated at room temperature for 1.5 hours.



Immunohistochemical analysis of paraffin-embedded human colon cancer tissue slide using 14281-1-AP (ZWILCH Antibody) at dilution of 1:50 (under 10x lens).



Immunohistochemical analysis of paraffin-embedded human colon cancer tissue slide using 14281-1-AP (ZWILCH Antibody) at dilution of 1:50 (under 40x lens).