

For Research Use Only

NOMO2 Polyclonal antibody

Catalog Number: 14328-1-AP

1 Publications



Basic Information

Catalog Number:

14328-1-AP

Size:

150ul , Concentration: 260 ug/ml by Nanodrop and 227 ug/ml by Bradford method using BSA as the standard;

Source:

Rabbit

Isotype:

IgG

Immunogen Catalog Number:

AG5595

GenBank Accession Number:

BC041131

GeneID (NCBI):

283820

UNIPROT ID:

Q5JPE7

Full Name:

NODAL modulator 2

Calculated MW:

139 kDa

Observed MW:

130 kDa

Purification Method:

Antigen affinity purification

Recommended Dilutions:

WB 1:500-1:2400

IP 0.5-4.0 ug for 1.0-3.0 mg of total protein lysate

IHC 1:20-1:200

IF/ICC 1:10-1:100

Applications

Tested Applications:

WB, IHC, IF/ICC, IP, ELISA

Cited Applications:

WB

Species Specificity:

human

Cited Species:

human

Note-IHC: suggested antigen retrieval with TE buffer pH 9.0; (*) Alternatively, antigen retrieval may be performed with citrate buffer pH 6.0

Positive Controls:

WB : BxPC-3 cells, HEK-293 cells

IP : HEK-293 cells,

IHC : human pancreas cancer tissue,

IF/ICC : BxPC-3 cells,

Notable Publications

Author	Pubmed ID	Journal	Application
Hong Shik Yun	26901847	Cancer Biol Ther	WB

Storage

Storage:

Store at -20°C. Stable for one year after shipment.

Storage Buffer:

PBS with 0.02% sodium azide and 50% glycerol pH 7.3.

Aliquoting is unnecessary for -20°C storage

*** 20ul sizes contain 0.1% BSA

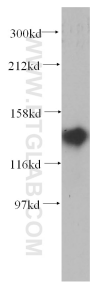
For technical support and original validation data for this product please contact:

T: 1 (888) 4PTGLAB (1-888-478-4522) (toll free in USA), or 1(312) 455-8498 (outside USA)

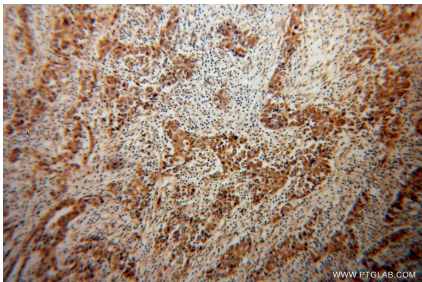
E: proteintech@ptglab.com
W: ptglab.com

This product is exclusively available under Proteintech Group brand and is not available to purchase from any other manufacturer.

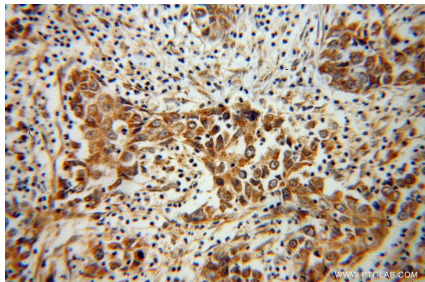
Selected Validation Data



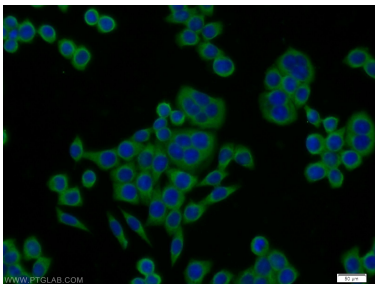
BxPC-3 cells were subjected to SDS PAGE followed by western blot with 14328-1-AP (NOMO2 antibody) at dilution of 1:300 incubated at room temperature for 1.5 hours.



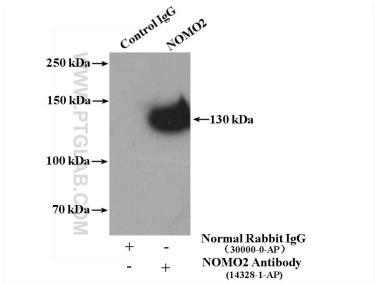
Immunohistochemical analysis of paraffin-embedded human pancreas cancer using 14328-1-AP (NOMO2 antibody) at dilution of 1:100 (under 10x lens).



Immunohistochemical analysis of paraffin-embedded human pancreas cancer using 14328-1-AP (NOMO2 antibody) at dilution of 1:100 (under 40x lens).



Immunofluorescent analysis of BxPC-3 cells using 14328-1-AP (NOMO2 antibody) at dilution of 1:25 and Alexa Fluor 488-conjugated Goat Anti-Rabbit IgG(H+L).



IP result of anti-NOMO2 (IP:14328-1-AP, 4ug; Detection:14328-1-AP 1:1000) with HEK-293 cells lysate 2400ug.