

For Research Use Only

CADM1 Polyclonal antibody

Catalog Number: 14335-1-AP

6 Publications



Basic Information

Catalog Number:

14335-1-AP

Size:

150ul, Concentration: 280 ug/ml by Nanodrop;

Source:

Rabbit

Isotype:

IgG

Immunogen Catalog Number:

AG5621

GenBank Accession Number:

BC047021

GeneID (NCBI):

23705

UNIPROT ID:

Q9BY67

Full Name:

cell adhesion molecule 1

Calculated MW:

49 kDa

Observed MW:

49-60 kDa

Purification Method:

Antigen affinity purification

Recommended Dilutions:

WB 1:500-1:1000

IHC 1:50-1:500

Applications

Tested Applications:

WB, IHC, ELISA

Cited Applications:

WB

Species Specificity:

human, mouse, rat

Cited Species:

human, mouse

Positive Controls:

WB : mouse liver tissue, A549 cells, human placenta tissue, mouse lung tissue

IHC : human intrahepatic cholangiocarcinoma tissue,

Note-IHC: suggested antigen retrieval with TE buffer pH 9.0; (*) Alternatively, antigen retrieval may be performed with citrate buffer pH 6.0

Background Information

CADM1 (cell adhesion molecule 1), also referred to as SglGSF, Necl-2 or TSLC-1, is a cell adhesion molecule belonging to the immunoglobulin superfamily. It can mediate homophilic and heterophilic cell-cell adhesion. CADM1 is expressed by a variety of cells including neurons, mast cells, spermatogonia, pancreatic islet cells, epithelial cells such as lung alveolar cells and biliary epithelial cells. CADM1 is involved in carcinoma pathogenesis and the expression of CADM1 is frequently down-regulated in various tumors derived from epithelial cells. It acts as a tumor suppressor in non-small-cell lung cancer (NSCLC) cells. (PMID: 18332875; 17326163; 20340131)

Notable Publications

Author	Pubmed ID	Journal	Application
Yujun Li	31819525	Onco Targets Ther	WB
Zhu Ying Y	23700466	PLoS One	WB
Haiqing Cai	30013657	Oncol Lett	WB

Storage

Storage:

Store at -20°C. Stable for one year after shipment.

Storage Buffer:

PBS with 0.02% sodium azide and 50% glycerol pH 7.3.

Aliquoting is unnecessary for -20°C storage

*** 20ul sizes contain 0.1% BSA

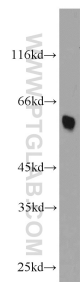
For technical support and original validation data for this product please contact:

T: 1 (888) 4PTGLAB (1-888-478-4522) (toll free in USA), or 1(312) 455-8498 (outside USA)

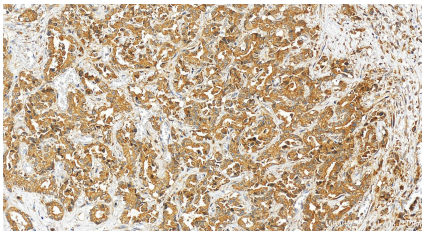
E: proteintech@ptglab.com
W: ptglab.com

This product is exclusively available under Proteintech Group brand and is not available to purchase from any other manufacturer.

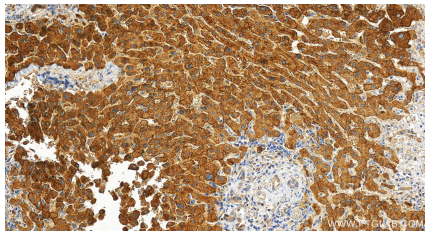
Selected Validation Data



mouse liver tissue were subjected to SDS PAGE followed by western blot with 14335-1-AP (CADM1 antibody) at dilution of 1:1000 incubated at room temperature for 1.5 hours.



Immunohistochemical analysis of paraffin-embedded human intrahepatic cholangiocarcinoma tissue slide using 14335-1-AP (CADM1 antibody) at dilution of 1:200 (under 20x lens). Heat mediated antigen retrieval with Tris-EDTA buffer (pH 9.0).



Immunohistochemical analysis of paraffin-embedded human intrahepatic cholangiocarcinoma tissue slide using 14335-1-AP (CADM1 antibody) at dilution of 1:200 (under 20x lens). Heat mediated antigen retrieval with Tris-EDTA buffer (pH 9.0).