

For Research Use Only

RABEP1 Polyclonal antibody

Catalog Number: 14350-1-AP

Featured Product

3 Publications



Basic Information

Catalog Number:

14350-1-AP

Size:

150ul, Concentration: 850 ug/ml by Nanodrop and 340 ug/ml by Bradford method using BSA as the standard;

Source:

Rabbit

Isotype:

IgG

Immunogen Catalog Number:

AG5693

GenBank Accession Number:

BC041700

GeneID (NCBI):

9135

UNIPROT ID:

Q15276

Full Name:

rabaptin, RAB GTPase binding effector protein 1

Calculated MW:

99 kDa

Observed MW:

100 kDa

Purification Method:

Antigen affinity purification

Recommended Dilutions:

WB 1:500-1:2000

IP 0.5-4.0 ug for 1.0-3.0 mg of total protein lysate

IF/ICC 1:20-1:200

Applications

Tested Applications:

WB, IF/ICC, IP, ELISA

Cited Applications:

WB, IP, IF

Species Specificity:

human, mouse, rat

Cited Species:

human, mouse

Positive Controls:

WB : HeLa cells, A431 cells, human liver tissue

IP : HeLa cells,

IF/ICC : HeLa cells,

Background Information

Rab GTPase-binding effector protein 1 is an enzyme that in humans is encoded by the RABEP1 gene. It belongs to rabaptin protein family. RABEP1 act as linker between gamma-adaptin, RAB4A and RAB5A. It is involved in endocytic membrane fusion and membrane trafficking of recycling endosomes. (PMID: 22841712)

Notable Publications

Author	Pubmed ID	Journal	Application
Amir Aghajanian	33038388	J Mol Cell Cardiol	WB
Dawei Wang	34796874	Elife	IF,IP
Gabrielle Parkinson	34657963	J Cell Sci	WB

Storage

Storage:

Store at -20°C. Stable for one year after shipment.

Storage Buffer:

PBS with 0.02% sodium azide and 50% glycerol pH 7.3.

Aliquoting is unnecessary for -20°C storage

*** 20ul sizes contain 0.1% BSA

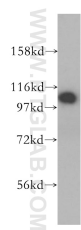
For technical support and original validation data for this product please contact:

T: 1 (888) 4PTGLAB (1-888-478-4522) (toll free in USA), or 1(312) 455-8498 (outside USA)

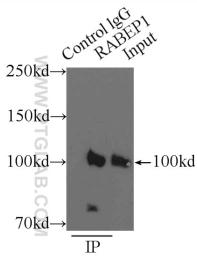
E: proteintech@ptglab.com
W: ptglab.com

This product is exclusively available under Proteintech Group brand and is not available to purchase from any other manufacturer.

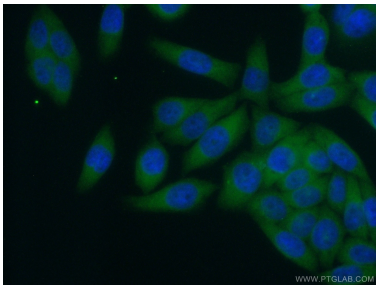
Selected Validation Data



HeLa cells were subjected to SDS PAGE followed by western blot with 14350-1-AP (RABEP1 antibody) at dilution of 1:400 incubated at room temperature for 1.5 hours.



IP result of anti-RABEP1 (IP:14350-1-AP, 3ug; Detection:14350-1-AP 1:500) with HeLa cells lysate 3800ug.



Immunofluorescent analysis of (10% Formaldehyde) fixed HeLa cells using 14350-1-AP (RABEP1 antibody) at dilution of 1:50 and Alexa Fluor 488-conjugated AffiniPure Goat Anti-Rabbit IgG(H+L).